

McIntyre



# THE PERUNA EXPRESS

southern methodist university  
student handbook volume 1  
1982-83

# table of contents

## SMU

Welcome Letters	4
Student Life	5
Student Organizations and Clubs	7
Student Government	19
Look What's Happening	21
Campus Services	26
Academics	28
University Deans	29
Library Hours	30
Trivia and Tradition	31
Campus Map	32

## Big "D"

Culture in Big "D"	34
Consumer Guide	36
Restaurant and Entertainment Guide	42
Church Directory	48

## SMU Student Codes

The SMU Student Code	50
The University Judicial System	57
The Honor Code	61

Big "D"

SMU student codes

acc  
Un  
the  
col  
in  
en  
(  
10-  
til  
ho



OFFICE OF THE  
STUDENT BODY  
PRESIDENT



Dear Students:

On behalf of the student body, I welcome you to S.M.U. I hope that this year will be a happy and successful one for you. One way to achieve this is through involvement...in your classes, with your teachers and fellow students, and especially in campus organizations. There are over 100 organizations at S.M.U. catering to numerous needs and interests. These organizations have been created by students and depend on your involvement for their existence.

Student Government is the area I have become involved with, and I urge all students to come by the office to see what your Student Association can do for you, and what you can do for your Student Association. The Student Government office is located on the lower level of the Student Center in the Student Activity Center. You'll find that several other organizations also have their offices there, and we would be most happy to meet you and welcome you to S.M.U. So do drop by and say hello.

Please take time to read The Peruna Express thoroughly. We think you'll find it to be of valuable assistance to you throughout the year in becoming acquainted with all aspects of S.M.U. Everything from Library and building hours, phone numbers, information about academics, campus services, and student organizations have been included.

Again, welcome to S.M.U., and I wish you the best of luck in the coming year. Feel free to stop in and see me anytime.

Sincerely,

Joseph M. Dooley, III  
Student Body President



OFFICE OF  
THE PRESIDENT

To the SMU Student Body:

These are exciting and challenging times for SMU and I'm delighted to welcome each of you to the campus as we begin the 1982-83 academic year.

Significant improvements are being made in both academic programs and the intellectual atmosphere at our University. By your dedication to individual scholarly pursuits and your involvement in the many cultural opportunities at SMU, you will play an important role in these advances.

In the area of Student Life there will be continued staff commitment to excellence as well as programmatic improvements to help enrich your out-of-class experiences. In addition to the many and varied opportunities for participation in activities and organizations, the several university counseling services will, of course, be available to serve the more personal concerns of our individual students.

SMU is becoming an even more vital and vibrant University Community, and with the joint enthusiasm of students, faculty, and staff we anticipate a most enjoyable and productive new academic year.

With best regards,

L. Donald Shields  
President

# student life

Yes, there is life at SMU for students in between classes and studying. Now that you're here we thought you'd like to know what you can look forward to in terms of fun and activities in the coming year! The following is just a sampling of the many events available to you:

## Orientation—August 22-29

Feeling lost and wondering what to do? Don't worry. Orientation is here to help you get acquainted with people and places at SMU! A lot of activities have been planned for you including: Play Fair (non-competitive games); presentation of the films "Silver Streak" and "Caddy Shack"; an open house at the Student Center complete with pantomimist; Frisbee tournaments; roller skate rentals. There will be a Faculty Colloquium, and the Convocation on August 29 will open the new year!

## Greek Week—September (no dates set)

No, this isn't a week in which everyone speaks Greek and wears togas! But it is a week when Greeks and Non-Greeks get together for a lot of fun activities like the Greek Olympics and an all-school party. The week opens with a non-denominational worship service, Greek mixers, a blood drive, workshops for Greek members, a President's Reception, dinners, luncheons, and the Pitchers 'N Profs Party. Be sure to watch The Daily Campus for announcements regarding Greek Week, and join in the fun. You'll be glad you did!

## Parent's Weekend— Sept. 30, Oct. 1 & 2

Quick! Clean up your room and do your semester's laundry! It's Parent's Weekend, and the folks are coming to campus. This is your chance to show them around, and it's also SMU's chance to get to know your parents. The Mother's Club offers a luncheon and style show,



bio "d"

smu student codes

and there is a Dad's Club Bar-B-Q, as well as a Parents Council Reception. If they like, they can take a bus tour of Dallas, and of course, there's the football game to attend. The annual Talent Show is a highlight of the weekend and features groups selected to perform for our parents, and is always a lot of fun to see. And best of all, your parents might take you out to dinner while they're here!

### **Fiji Olympics—October (no dates set)**

Here's a great way to meet people and have fun! The Fiji Olympics begin with a general assembly and conclude with a Victory Party. In between there's a Freshman Skit Night, Sorority Skit Night, spirit activities, and of course, the Olympic Games. So be watching for announcements about the Fiji Olympics, and don't miss out on all the fun.

### **Homecoming—October 29**

Homecoming is an exciting time for everybody at SMU. Along with activities for returning alums, there's the Pigskin Revue on Thursday and Friday nights before Homecoming day in which the Mustang Band puts on skits and performs musical selections. And the Homecoming Queen is crowned at the football game capping off an exciting week of activities and parties. Circle this date in red on your calendar, and we'll see you there!

### **Thanksgiving Break— November 25-28**

This is your chance to catch up on your reading, begin studying for finals, or for just plain relaxing. Before you know it, it'll be Christmas!

### **Celebration of Lights— December (no date set)**

One day you'll be sitting in class gazing out the window into the Main Quad when suddenly you'll notice some people stringing Christmas lights through the trees and around the columns of Dallas Hall. They're getting ready for the annual

Celebration of Lights, an evening of seasonal greetings from President Shields and students, caroling led by the SMU Choir, and the sudden illumination of the darkened campus by thousands of bright Christmas lights! It's really a breath-taking experience, guaranteed to put you in the holiday spirit!

### **Christmas Break— December 19-January 18**

AHHH, at last! We hope Santa's good to you, and we'll look forward to seeing you again next semester!

### **Brother/Sister Roundup— February (no date set)**

If your brothers and sisters were eager to hear all about SMU during Christmas Break, here's your chance to bring them to SMU for a first-hand, close-up look. Activities are planned to welcome them here, show them around, and have a good time.

### **Spring Break—March 12-20**

Bet you thought it would never come! Now that it's here, what are you going to do? Go to Ft. Lauderdale? How about the South Texas Coast? Whatever you decide to do, you'll have a whole week to do it in, so enjoy!

### **Peruna's Birthday—April (no date set)**

This one's a MUST! Peruna, of course, is the name of our Mustang mascot, and Peruna's Birthday is a day-long celebration of SMU's founding for all of us, and Dallas to enjoy. It's our way of thanking Dallas for its support. There will be booths to visit, like the dunking booth, a pie-eating contest, and crafts to browse through and buy. So dress comfortably and come enjoy all the things to do, as well as the warm spring weather, at Peruna's Birthday!

### **Graduation—May (no date set)**

This is always a day of mixed emotions. We're so happy for, and proud of, the graduating students, yet a little sad to see them go. The

ceremonies are all so beautiful, and it's quite awe-inspiring to see the majesty and solemnity of all the students robed in their gowns and mortar boards receiving their degrees! If you're still in Dallas after finals, you really should try to attend at least one of the many activities; and if you're still an undergraduate, you'll get a glimpse of what's in store for you!

### **Summer Vacation— May 18, 1983**

Congratulations! You made it through a whole year! Looking back on it with all the things to do, it was really a lot of fun, and it sure went by fast. Hope you have a great summer, and we'll see you next year!



# clubs & organizations

Have you got a special interest? Want to get involved in SMU activities? Don't despair...hold onto your chair! We've got clubs and organizations that cater to every fancy. They offer opportunities to learn, make friends, join in activities, and have fun! So, take a look through this section and mark those clubs that interest you and...Get Involved!!

## **A.A.P.G.—The American Association of Petroleum Geologists**

So you don't know the difference between a gusher and a duster? Well, here's a club that can help you out. The SMU-AAPG is an organization of graduate and undergraduate students involved in the study of geology and geophysics. The group learns about careers and developments in petroleum geology. This is accomplished through monthly meetings, seminars, field trips, picnics, and paper presentations. For more information contact Dr. Robert Laury of the Geology Department.

## **A.B.F.A.S.—The Association of Broadcast/Film Art Students**

"You oughta be in pictures..." and the Association of Broadcast/Film Art Students provides an opportunity for interested students to meet people in the fields of radio, television, and film production, distribution and direction. Sponsored events include films, field trips, seminars, and parties. So, if you think you oughta be in pictures, contact Dr. Ken Burke at 692-3431 for more info.

## **A.B.S.—Association of Black Students**

acts as a liaison for educational, cultural, political, and social exchanges among black students, and the SMU community, aiding in the awareness and significance of blacks at SMU. For more info contact the IRC at 692-3054.

## **A.I.E.S.E.C.**

Do you read the Wall Street Journal and have a strong desire to become the next chairman of the board of a large corporation? Then you're just the sort of person AIESEC is looking for. The International Association of Students in Economics and Business Management is an international student-managed organization that seeks to identify and train students with outstanding leadership potential. All students are eligible.

## **Alpha Lambda Delta**

Young and brilliant? Want to stay that way? This is the honorary for you. Alpha Lambda Delta has as its purpose encouraging high scholastic achievement. It is open to any freshman with 12 or more hours and a GPA of 3.5 or better. (Whew!)

## **Alpha Phi Omega**

is a national service fraternity dedicated to serving the campus, community, and the country. APO welcomes Greeks and Non-Greeks who are interested in service, leadership, and friendships. The fraternity combines fun and fellowship with service. Phone 692-2766 for all the details.

## **Anthropology Club**

Were you intrigued by the job Indiana Jones had in "Raiders of the Lost Ark"? You can learn more about it through the Anthropology Club, which is composed of all individuals interested in the study of anthropology. Through a yearly series of speakers, current issues in cultural anthropology, archaeology, physical anthropology, and linguistics are presented to interested parties in the university and the community at large. Membership includes graduates, undergraduates, faculty members, and members of the SMU and Dallas community not directly involved with anthropology. Check with the Anthropology Department for details.

## **A.S.C.E.—American Society of Civil Engineers**

If you're constructing a career for yourself, check into this. The Southern Methodist University Chapter of ASCE affords the beginnings of professional associations to its members. It is sponsored by the Dallas branch of the Texas section of the organization; thus, it provides an opportunity for professional association for student engineers. Contact the C/ME Department for more info.

## **A.S.M.E.—American Society of Mechanical Engineering**

Ever wonder just exactly what mechanical engineers do? The A.S.M.E. will fill you in, and at the same time, you'll have fun participating in student activities like field trips to industry, student conferences, projects, and paper presentations! Contact the C/ME Department to find out how you can join in.

## **A.S.P.A.—American Society for Personnel Administration**

offers students majoring in business administration, psychology, sociology, and related disciplines, knowledge and insight into the personnel and industrial relations field. All SMU students interested in any of these fields is eligible to join.

## **Bacchus**

is a student organization working to prevent alcohol abuse problems BEFORE they start! If you'd like to learn more about alcohol, or are interested in joining other university students in promoting responsible drinking decision, C/FLL BACCHUS at 692-2019.

bio  
"?"

## INTERFRATERNITY COUNCIL

**“WE WELCOME**

Alpha Phi Alpha  
Alpha Tau Omega  
Beta Theta Pi  
Delta Chi  
Delta Sigma Phi  
Kappa Alpha  
Kappa Sigma

Lambda Chi Alpha  
Omega Psi Phi  
Phi Delta Theta  
Phi Gamma Delta  
Pi Kappa Alpha  
Sigma Alpha Epsilon  
Sigma Chi

Panhellenic and IFC offices are located in the Activity Center in the Lower Level of the Student Center. Feel free to come by for information and to visit. The Activity Center is the center of Student “Happenings.” Information can be obtained for all areas of campus involvement.

**IFC INFORMATION**

**Sept. 17 Open Rush begins for Upperc students. Interested students must sign up at the IFC office. Transfers bring a copy of your transcript.**

**Jan. 13—17 Fraternity Formal Rush**  
Alpha Phi Alpha and Omega Phi Rush Parties to be announced

# AND PANHELLENIC You To SMU™



**IFC Office**  
**IFC Advisor**  
**Panhellenic Office**  
**Panhellenic Advisor**

**692-2857**  
**692-2761**  
**692-3350**  
**692-2533**

Greek life continues to grow at SMU. An individual who selects sorority or fraternity membership will have many opportunities. Developing lifetime friendships is the foundation of fraternities and sororities. Opportunities for personal development, academic achievement, campus and community involvement, leadership and social activities are all a part of Greek Life. We hope that many of you will become a part of the Greek System and work with us to continue to offer programs and activities that will benefit and interest all sorority and fraternity members.

Alpha Delta Pi  
 Alpha Kappa Alpha  
 Chi Omega  
 Delta Delta Delta  
 Delta Gamma  
 Delta Sigma Theta

Gamma Phi Beta  
 Kappa Alpha Theta  
 Kappa Kappa Gamma  
 Phi Mu  
 Pi Beta Phi  
 Zeta Tau Alpha

## **PANHELLENIC INFORMATION**

**Aug. 30 Open Rush begins for upperclass students. Interested students must sign up at the Panhellenic office. Transfers bring a copy of your transcript**

**Aug. 31 Rusher Orientation in the Grand Ballroom of Student Center 7:00-8:30 p.m.**

**Aug. 31—Sept. 24 Registration for Formal January Rush in the Student Activity Center.**

**Jan. 13—18 Sorority Formal Rush**

bio "A"

smu student codes



### Beta Alpha Psi

is an accounting honorary offering membership both semesters to students with 9 hours of accounting and a 3.2 GPA in accounting or 12 hours with a 3.0 GPA. Candidates must have a 3.0 cumulative GPA. Activities include visits to different businesses, banquets, and professional programs.

### Beta Beta Beta

is the Biology National Honorary Society which has as its goals the promotion of excellence in the study of biology, encouraging research, and enlightening the general public with regard to current advances in biological research. Activities include speakers, tours of medical schools and research facilities, and social events designed to facilitate faculty and student interaction. Requirements for initiation are 3 semesters of biology with a cumulative 3.5 GPA in Biology. Meetings are open to everyone. Contact the Biology Department.

### Beta Gamma Sigma

is the scholarship society sponsored by the American Assembly of Collegiate Schools of Business. Election to membership in Beta Gamma Sigma is the highest scholastic honor that a student in business can attain. To be eligible for membership in the Beta of Texas Chapter, students must rank in the upper five percent of their junior class or the upper ten percent of their senior class, or rank in the upper twenty percent of those receiving masters degrees, provided they have attained certain grade averages.

### Campus Crusade for Christ

is an inter-denominational Christian fellowship open to all students. They are active in having many small-group Bible studies on campus, as well as sponsoring many get-togethers and campus-wide speakers. If you are interested, or want more information, please call Paul Townsend, Campus Director, at 528-7949.

### Campus Ministry Council

is composed of representatives from all recognized religious organizations at SMU who wish to share in a ministry to the campus as a whole. It serves in an advisory capacity to the Committee on Organizations of the Student Senate and the Dean of Students. The Council meets once a month. Activities sponsored in the past have included the sale of UNICEF greeting cards, assisting in sponsoring and promoting the observance of Food Day, and other programs of concern to the campus. For more information, call the Campus Ministry Office, 692-2788, or the Chaplain's Office, 692-2787.

### Campus Y

is the melting pot of SMU—all students are the ingredients. Out of their kettle ascend the sweet fragrances of the elimination of racism and the attainment of peace, justice, freedom and dignity for all people. If you'd like to be part of the recipe, call 692-3418.

### Canterbury House

No, this isn't the place where Chaucer's pilgrims went to tell their tales! But it is the place where opportunities for Christian interaction and fellowship are provided in context of the Episcopal Church. It is open to all members of the SMU community, and the new chaplain, Jeff Kraemer, would love to welcome all of you to Canterbury House. Drop by soon and meet him—you'll be glad you did! Canterbury House is located at 3308 Daniels, or call 363-2911 for more information.

### Catholic Campus Ministry

offers to the Catholic students and faculty a community in which their faith and Christian life may grow. Mass is celebrated Sundays at 9:00 a.m. and 5:00 p.m. in Perkins Chapel. Weekly fellowship groups, and retreats are scheduled. The chaplain's office is in Room 106 of the Student Center. Phone 692-2788.

### Chemistry Club

You say you were doing a simple experiment when suddenly the roof of your family's home blew two miles into the air and scattered to the four winds? Well, here's a club that'll help you discover what went wrong, and how to do it right! The Chemistry Club provides encouragement in the study of chemistry and promotes fellowship among chemistry students. Meetings include speakers, tours, social events. For information call the Chemistry office, at 692-2476.

### Chess Club

If you'd like to learn how to play chess well enough to checkmate Bobby Fischer, here's the place to do it. This club offers chess players an opportunity to meet others with the same interests. It provides an access to play chess and other games like backgammon and bridge, as well as competing in tournaments. Everyone is invited. Call Eric Morrow, 387-5639.

### Chi Epsilon—Civil Engineering Honorary

contributes to the improvement of the civil engineering profession as an instrument for the betterment of society—to recognize the fundamental characteristics of the successful civil engineer and to aid in the development of these characteristics. Upperclassmen with 3.0 average and in the upper third of their class are eligible.

### Chinese Students Association

Most members of the SMU Chinese Students Association were from the Republic of China, known as the China in Taiwan. Their goals are to serve the Chinese students. Emphasis is on offering them a better life by holding a variety of extracurricular activities as well as helping them to adapt to living in America. Contact the Office of International students at 692-2344 for more information.

## Christian Science Organization at SMU

meets once a week in the Student Center. If you're a practicing Christian Scientist or simply interested in learning more about Christian Science, then feel free to attend these meetings! For more information, call Barbe Beattie at 350-7833. All are welcome.

## Circle K

Enjoy philanthropic work? Circle K is a service club sponsored by the Dallas Kiwanis Club. Each month they host a birthday party at Buckner Children's Home. They also work with Special Olympics, March of Dimes, and the American Heart Association. All interested individuals are invited to meetings held every Wednesday at 6:00 in Room 104 of the Student Center.

## College Republicans

The College Republicans of SMU is the official auxiliary of the Republican Party on campus. They work in campaigns, bring prominent speakers to campus, lobby for student interests, and have parties and conferences with students across the state. For more information, contact Bonnie Brown, Chairman, Box 3494 SMU (Campus Mail).

## Cox School of Business— Student Caucus

In the Edwin L. Cox School of Business, the primary voice of students in government is that of the student-elected Student Caucus. The Caucus is comprised of graduate and undergraduate students, and is concerned with student issues within the business school, as well as being a liaison between students, faculty, and administration. Caucus members sit on the Cox School of Business Assembly, and membership of the standing committees of the business school includes students from the Caucus.

## Delta Phi Alpha

is the German honorary. Initiates must be of sophomore standing and presently enrolled in

an advanced German course. A minimum GPA of 3.33 in all German courses taken, and a 3.0 in all college work is a prerequisite for membership. Contact the German Department for more information.

## Delta Sigma Pi

What sort of coed reads *Forbes*? Suave, smart, sophisticated...the sort of coed who belongs to Delta Sigma Pi, the coed professional business fraternity that enjoys a close working relationship with the business school's faculty and staff as well as the business community. It offers the business student a meaningful professional and social experience. Members are selected by the local chapter from the business and economics majors with a minimum GPA of 2.50.

## English Club

Like Shakespeare? OK, Dickens? Well, how about T.S. Eliot, Steinbeck, and Faulkner? Great! All these and more are available to you through the English Club which acquaints students interested in the English Department at SMU with the faculty and courses of the Department. Activities include the Liberal Arts Career Seminar, the Valentine's Day Reading, and the Literary Festival, to name but a few! Non-English majors are welcome. Contact the English Department for details.

## Eta Kappa Nu

is the honorary society for qualified Electrical Engineering undergraduate and graduate students who are distinguished by scholarship, activities, leadership and exemplary character. Contact the Electrical Engineering Department for further information.

## French Club

Parlez-vous Francais? Me neither, but if we join the French Club, we'll be parlez-vousing Francais in no time flat! The French Club welcomes to membership anyone who is interested in France and the French language. They offer a variety of events, including monthly movies in French (ooh-la-la!), designed to pro-

mote an awareness of French culture and provide an opportunity for all to hear and speak the French language. See you there!

## Freshman Engineering Council

is a representative organization for freshmen who have declared majors in the SEAS. It attempts to introduce the incoming freshmen to the general collegiate life and life within the SEAS by providing the means for social interaction with other engineering students, faculty, guest speakers, and other university students. What a great opportunity!

## German Club

Forgotten how to say "Achtung" in the proper diction? Well, here's a club where you can have the opportunity to practice German, and maybe even learn how to yodel! The German Club also gives students an opportunity to learn about German, Swiss, and Austrian culture. Movies and activities are planned by the club for all who are interested. Meetings are held weekly. Contact Professor Van Selm at 692-2289 or President Jennifer Poteat. They'll be glad to tell you more about the German Club.

## Harris Society of Biologists

provides an opportunity to focus on biological concerns, and promotes interaction between students and national scientific communities. Tri-Beta, the national biology honorary, is affiliated with Harris Society. Contact the Biology Department for further information.

## Highland Park United Methodist Church— University Ministry

encourages Christian growth through worship, study, fellowship, and service. The University Class for undergraduates and the Colloquium Class for graduates meet at 10:45 a.m., Sundays. Supper Club meets at 5:30 p.m. Wednesday is College Night with choir, dinner, and a communion service. Contact Robert Hasley or Dorothy Dickson at 521-3111.

big "P"

### Hilltop Investment Club

is for those who'd like to be two steps ahead of Joe Granville, and at the same time understand completely Louis Rukyser and his "elves" on Wall Street Week. Members of the Hilltop Investment Club learn about investing by participating in an investment fund where investment opportunities are analyzed and voted upon. Various programs supplement practical learning. HIC is also an ORL Special Interest Group, thus about half their members live in Mary Hay III. Contact the knowledgeable Rod Knoll for details.

### History Club

Interested in the Napoleonic Wars, the Reformation and Restoration of the English Monarchy, and how they may or may not relate to world events of today? Check this club out! The History Club brings students interested in History together as well as promoting student-

faculty exchange. They sponsor lectures, films, parties etc., and all students are eligible to join—no requirements. Contact the History Department, P.S.: Maybe you can find out why they call it "History" instead of "Herstory".

### The Honor Council

consists of 22 undergraduate students who implement the Honor Code by promoting academic honesty and holding hearings for alleged violations. Upperclass members are selected in the spring and freshman in the fall. Contact Dr. Thomas Arp, 692-2982, or the Honor Council Office, 692-2534.

### Ice Hockey

SMU participates in SW Collegiate Hockey Association. Reasonable hockey experience necessary. Season starts October 1st and ends March 30th. Uniforms, sticks, ice time supplied by the school. For more information and sign up

before October, call Coach Dr. L.P. Novak, 692-2931 or 692-2926.

### IEEE

The Institute of Electrical and Electronic Engineers (IEEE) is the world's largest professional Engineering society. The student branch at SMU is composed of Electrical and computer science majors. The purpose of IEEE is to bring the engineering students into contact with practical and active engineers through speakers, field trips, and workshops.

### Intramural Program

provides opportunities for SMU students to participate in athletic events throughout the school year. Those who participate have the opportunity to maintain better health through exercise, develop physical and leadership skills, and meet new friends. The SMU Intramural Program meets the very important goal of encouraging students to make campus participation a well rounded experience which can serve as a model for a fulfilling lifestyle in later years. For more information, contact Dave Melahn (Men's Coordinator) or Sally Griffner (Women's Coordinator) at 692-3367.

### Japan Club

Got a yen for things Japanese? The purpose of this club is to foster a relationship between the Japanese and American students. There are regular meetings to share American culture and SMU with exchange students from Kansai Gakwin University (SMU's sister school in Japan), and to share Japanese culture with SMU students. Everyone is welcome to attend meetings and share in the fun activities. Please contact Prof. Glenn Linden or Prof. Sharon Nolte, faculty advisors.

### Jewish Student Association

has monthly meetings on campus in addition to planned activities. It sponsors Jewish Awareness week, and there are many plans for this year! Get involved!

# ALD

## Alpha Lambda Delta Freshman Honorary



wants to welcome  
you to SMU

*We sponsor: Free Tutoring for freshman  
Informative "Talks" for freshman  
Coffee & Donut Sales during finals  
The Hotline*

**For further info:**

- Student Center
- Room 208
- 692-2720

## Kappa Mu Epsilon

Can you multiply four numbers by four numbers in your head within three seconds? If you can, and bear no resemblance to a computer, have we got a club for you! K.M.E. is the honorary Mathematics Society established in 1940, and it recognizes outstanding achievement by undergraduate and graduate students. K.M.E. seeks to promote an interest in mathematics and fosters a high standard of scholarship and professional training. Activities include bi-monthly meetings, a banquet each semester for new initiates, and the SMU Math Competition for area high school students. Requirements for membership are completion of Math 2339, a 3.2 GPA in mathematics, and an overall GPA of 3.0.

## Kirkos

Are you friendly, smart, a tireless worker and leader? Oh, pshaw, go on! We knew we'd find a club for you. Kirkos is an honorary organization for outstanding junior and senior women who are selected to membership on the basis of their friendliness, leadership, scholarship and service to the university. The "Friendly Forty" as the group is called, seeks to strengthen the ties of friendship, cooperation, and understanding within the university community. See? We knew we'd find a club for you.

## Luther Club

Under the auspices of Lutheran Campus Ministry, provides opportunities for students to come together for conversations, study, and service-related activities, as may be desired and carried out by the students. Luther Club serves as a contact point for "Lutheran preference" students with the Lutheran Contact Pastor.

## Mam'selles

If you'd like to learn the secrets of being a top model like Brooke Shields, Mam'selles is a great place to start! They give students an opportunity to gain experience in the modeling and fashion field. 50 members are chosen in the fall by professionals in the fashion business. Members coordinate and perform events on campus and in the Dallas community throughout the year. And you never know...you may be "discovered"!

## M.A.S.A.—Mexican-American Student Association

promotes an awareness of Chicano culture, provides supportive services to SMU Chicano students, lessens the problems of the university and community life, and encourages other Chicano students in attaining higher education. M.A.S.A. acts as a liaison between the university and Chicano community, and helps to eradicate all forms of discrimination and institutional racism at SMU. Open to all students who share in the ideals and goals of M.A.S.A. Contact Elliott Navarro at 692-2720 for more information.

## Metro Mustangs

is a service and social organization designed to create a sense of unity, promote school spirit, and provide a means by which the commuting student may take part in the university experience. All SMU students welcome. Phone: 692-3358.

## Mexican American Engineering Society

is a professional engineering organization nationwide. M.A.E.S. encourages Mexican American students to study engineering and provides support for those who do. Membership is open to everyone. Activities include area recruitment for SMU, and the National Symposium in California.

## Mini Baja

The Mini Baja Club is composed of any interested students who are willing to design and build a buggy from scratch. This project, which is begun in the fall, is designed to test the intellectual and mechanical skills of the students. At the end of the year the participating members enter their tested buggy in the National Mini-Baja race, which is a series of events involving endurance, maneuverability, speed, power, and efficiency. For more information contact Dr. Louis of the mechanical engineering department.

## Mortar Board

is an active honor society composed of members selected at the end of their junior year by the graduating members. They are selected on the basis of outstanding scholarship, leadership, and service to the university and community. The purpose of the honor society is to promote the welfare of the university community. Membership is open to any junior student with at least a 3.2 GPA. Applications are available in early spring.

## M.S.A.

The Muslim Student Association of the United States and Canada, of which they are a branch, endeavors to establish a divinely guided community that believes in ALLAH, and preserve, advance, and represent the religious, social, moral, and intellectual standards of the Islamic faith. The organization arranges congregational prayers and religious, educational and cultural activities. You make the choice; an active participant or a silent observer.

## M.O.V.E.

Mobilization of Volunteer Efforts offers volunteer opportunities for course credit, career exploration, or personal enrichment. Be a tutor, counselor, probation officer, friend to the elderly, "pal" to children who need you, recreational supervisor, or choose from hundreds of volunteer needs in Dallas. Contact M.O.V.E.'s office, 3116 Fondren, 692-3418.

## Music Educators National Conference

Membership is open to any student interested in advancing music education. Members meet monthly to hear speakers and interact with other music educators. In addition to receiving the *Music Educators Journal*, a fall workshop and the state-wide spring convention are annual highlights.

## Music Therapy Club

Does whistling a happy tune make you feel better? Then take a look at this club. The pur-

bia "d"

smu student codes

pose is to advance the development of music to accomplish therapeutic aims. Music Therapy Club is interested in advancing training, education, and research in music.

### **The National Society of Black Engineering Students**

is a non profit student based organization dedicated to the enhancement and encouragement of minorities in the field of engineering. A few of many campus and community projects include science fairs for junior high and high school students, college career fairs, and acting as role models for community high schools and junior high schools.

### **Operations Research Management Science**

promotes free interchange of information among students, practitioners, and professors of O.R.M.S. Contact the Department of Research and Engineering Management, 303 Caruth, 692-3088.

### **Order of Omega**

was founded to recognize outstanding fraternity and sorority members for their service to the Greek community and the university. New members are selected in the spring.

### **Organization of International Students**

is an organization that is open to all students at SMU. Primarily the members are International students. They offer social and academic programs for the membership and any interested students, faculty, and staff. They also discuss "what's going on" in the senate, on campus, and in the departments and concerns of everyone. And more importantly, they have fun doing it while working together! Contact Sandy Slattery at 692-2344 for more information.

### **Phi Alpha Theta**

is the history honor society. Each semester the society promotes interest in history through

speakers, films, and discussions. Requirements for membership are 12 hours of history courses, a 3.0 overall GPA, and a B+ GPA in history classes. For more information, contact Professor Niewyk or Professor Orlovsky in the History Department.

### **Phi Beta Kappa**

is the oldest Greek honorary. It promotes scholarship, friendship, and cultural interests, and is awarded to juniors and seniors in the School of Humanities and Sciences. Seniors must have completed 102 hours with a GPA of 3.5, and juniors must have completed 72 hours with a GPA of 3.9.

### **Phi Chi Theta**

If you're a woman who has her sights set on the business world, look into this fraternity! Phi Chi Theta is a national business fraternity that promotes women in business. All sophomore and junior business majors are eligible for membership in the fall.

### **Phi Eta Sigma**

is a national college scholastic honor society for freshmen. Membership is accorded to those freshmen who have earned a cumulative 3.5 GPA at the close of either their first or second semester at SMU. For more information call 692-2779.

### **Philosophy Club**

Why did the chicken cross the road? To find the answer to this and other perplexing questions, the Philosophy Club can help you out. It provides a variety of opportunities for discussion and lectures in various aspects of philosophy, and encourages and stimulates intellectual growth and scholarship. All students are welcome. Contact Professor Douglas Ehring in the Philosophy Department for more info.

### **Pi Delta Phi**

recognizes outstanding achievement in French, and promotes interest in French language, literature, and civilization through its activities. Requirements include 12 completed

hours in French, a 3.0 GPA in French, and current enrollment in a French course.

### **Pi Sigma Alpha**

encourages advanced studies and professional orientation in political science for both undergraduates and graduates. Requirements: Minimum of 15 hours in political science, including 6 hours in two survey courses of 1000 level, and a 3.0 in both overall GPA and Political Science courses. Contact the Poli Sci department for information.

### **Pi Tau Sigma**

is the national mechanical engineering honorary society. Junior and senior M.E. students in the top 35% of their class are eligible for membership. The organization fosters the high ideals of the engineering profession, stimulates interest in departmental activities, and promotes the mutual professional welfare of its members.

### **Program Council**

is the Students Activities Programming Board that provides a variety of educational, cultural, and entertainment activities to the SMU campus and Dallas community.

The Program Council can be found in the lower level of the Student Center in the Activities Center. The 1982-83 Executive Committee consists of the President, LESLIE BREWER, Vice President, PETER FRIEND, Treasurer, KANE DOSSETT, Secretary, LARRY PRABLEK, and Advisor, LOU ANN MORELL.

Through the SPEAKERS COMMITTEE, the Program Council brings a variety of intellectually stimulating speakers in the fields of politics, the environment, entertainment, and current issues. Past events: Phyllis Schlafly and Karen DeCrow, Vincent Price, Mario Thomas, and Richard T. Davies.

CENTER ACTIVITIES not only organizes all sales in the Student Center Lobby but programs in lobby, grand ballroom, and coffee house entertainment as well. Past Activities: Tom DeLuca, the hypnotist, Mike Reid, and the Richard Pryor Comedy contest.

The MINOR TEE—CHICANOS cultural activities munity realize the ico and the great Dallas. Past event Celebration, Mex scholarship dance

The major even COMMITTEE—BL Month which is i gramming during achieve total awar to provide prograi well as entertainin

A favorite and r the SMU LITERAR annual event whi claim and is held fi talented group of the campus give ti through readings sions, and semina theime, Raymond Eudora Welty.

SPECIAL EVENT only programs a Homecoming danc presents all sort Michael Murphy naments, Plairfair, magician.

The Program Co organizes fun trip Break, and Easter were also taken to and to San Antonic

Escape with th COMMITTEE and h hiking trips each s spots as Tyler State turesome souls whi own, we also rent ment.

Our FILMS COMI of high caliber box "Ordinary People," well as fun film fet Film Festival, and th House Festival.

The **MINORITY ACTION COMMITTEE—CHICANOS** provides entertainment and cultural activities that will help the SMU community realize the rich cultural heritage of Mexico and the great influence it has in the city of Dallas. Past events: Mexican Independence Day Celebration, Mexican Cinema week and a scholarship dance.

The major event for the **MINORITY ACTION COMMITTEE—BLACKS** is Black Emphasis Month which is in February. Through the programming during that month the goal is to achieve total awareness of the black culture and to provide programming that is educational as well as entertaining.

A favorite and nationally recognized event is the **SMU LITERARY FESTIVAL**. This is a popular annual event which has received national acclaim and is held for a week each November. The talented group of authors and poets who visit the campus give the benefit of their knowledge through readings of their work, panel discussions, and seminars. Past authors: Donald Barthelme, Raymond Carver, John Updike, and Eudora Welty.

**SPECIAL EVENTS** is the committee which not only programs annual events such as the Homecoming dance and the Craft Fair but also presents all sort of creative events like the Michael Murphy concert, frisbee golf tournaments, Plairfair, and Dan Weyerhauser, the magician.

The Program Council **TRAVEL COMMITTEE** organizes fun trips for Thanksgiving, Spring Break, and Easter Holidays. Greek excursions were also taken to New Orleans for Mardi Gras and to San Antonio for Fiesta.

Escape with the **OUTDOOR RECREATION COMMITTEE** and help plan several camping and hiking trips each semester to such well known spots as Tyler State Park. For those more adventuresome souls who would rather camp on their own, we also rent all sorts of camping equipment.

Our **FILMS COMMITTEE** presents a showcase of high caliber box office hits such as "Tess," "Ordinary People," "Stripes," and "Arthur" as well as fun film festivals like the Woody Allen Film Festival, and the Blues Brothers and Animal House Festival.

**PROGRAM COUNCIL** MAKES A DIFFERENCE, so come by the activity center and get involved!

### **PRSSA—Public Relations Student Society**

is open to all students interested in Public Relations. Activities include guest speakers from the Dallas area.

### **Psi Chi**

is a nationally-affiliated, honorary organization for students (non-majors welcome) and others who have interests in psychology. Membership depends upon academic performance. SMU has one of the oldest chapters in the Southwest, and yearly provides a base for students interested in all aspects of psychology. Contact the Psychology Department.

### **RHA—Residential Halls Association**

RHA is a governing structure of the North Quad. RHA is comprised of one elected member from each floor on North Quad. The function of RHA is to provide social and educational programming, for issues and concerns, and to generally improve the quality of life for upperclass students living on campus.

### **Rugby Club**

Enjoy Blood, Sweat and Beer with the SMU Rugby Club. All students and faculty members are invited to join the team, become a social member, or to come watch us play. Look for more information in The Daily Campus.

### **Russian Club**

Did you love "Dr. Zhivago"? Do you find Baryshnikov and Nureyev irresistible? Then this is the club for you! It's open to any student interested in understanding Russian culture, history, and language through films, speakers, dancing, singing, or dinners. Sounds like fun, nyet? For more information call the Russian Department at 692-2294.

### **Sailing Club**

The SMU Sailing Club sets sail almost every weekend at Lake Ray Hubbard or White Rock Lake, sailing full force with a fleet of 420's, planning regattas with Southeastern colleges, and having lots of fun. For the expert and the land-lubber! Call Mike White, faculty advisor, at 692-2821.

### **SEJC**

The Student Engineers Joint Council is the student governing body of the school of Engineering and Applied Science. Representatives from each of the engineering disciplines are elected in the spring to serve the following year. SEJC serves to promote and better student life and student faculty relations. SEJC is responsible for the SEAS course evaluations each semester, and for the annual SEAS Spring Banquet.

### **Sigma Delta Chi**

Sigma Delta Chi, The Society of Professional Journalists, is an organization to promote journalism on the undergraduate level. Sophomores, juniors, and seniors who are declared journalism or broadcast-film majors are eligible to join.

### **Sigma Pi Sigma**

is an honor society recognizing those students showing excellence in the field of physics. Three 3 hour physics courses counting toward a physics major, a 3.0/4.0 overall GPA, and a \$20 initiation fee are required for membership.

### **Sigma Tau Delta**

is the National English Honorary which encourages and recognizes academic excellence and intellectual curiosity in the study of literature. English majors taking upper-level courses are considered. Criteria include grade point (both English and overall) and recommendation of the faculty.

bio 'd'

smu student codes

### SMU Debate and Forensic Team

The SMU Debate and Forensic Team achieved great success in 1981-82 bringing a national championship to campus. The program in 1982-83 offers the opportunity to participate in national intercollegiate competition across the country in Debate, CEDA Debate, and Forensic Events. Contact John McMurphy at 692-2797 for details.

### SMU Indian Association

represents the culture and aspirations of IN-DIA, the largest democracy in the world! They have regular parties, meetings, cultural festivals, movies, etc., which gives ample opportunity for exposure to the SMU community and helps them to know you better. They had a wonderful time last year, and even more wonderful will be the coming years! Just drop in any of their parties or meetings and you will discover something new!

### SMU Leadership Dynamics Program

is a new program on campus which provides students with a blend of curricular and extracurricular activities. The program is designed to develop and refine leadership skills in students regardless of their academic major. For further information contact Dr. Dennis Roberts, Director of Residence Living and Leadership Programs.

### SMU Marketing Club

is an organization which has grown at a tremendous pace. Becoming active only two years ago, the club's membership has risen above 150 members, representing the largest business organization on campus. The club organizes professional programs which offer business related experiences and skills, as well as the opportunity to interact with local businesses such as Xerox, IBM, Neiman-Marcus, and others. The SMU Marketing Club.... "get the edge".

### SMU Student Artist Association

Be a part of art! The SMU S.A.A. is open to all people interested in the arts and provides interaction between students in art as well as a

close association with the faculty. They provide a gallery and showcases for exhibition of student and professional works in addition to films, field trips to museums, and opportunities to attend Dallas gallery opening receptions.

### SMU Student Concern

is an organization serving the non-traditional students at SMU. Special emphasis is placed on aiding the older student re-entering academia and the transferee who finds the life-style of SMU quite different from their previous college. In addition to peer advising and referrals to University services, events are planned to draw the membership into a more active campus social life. Student Concern is located in the Human Resource Center, 3116 Fondren Drive, across from the Science Library. The phone number is 692-3418.

### Student Foundation

Dedicated to promoting and developing good will for the University, the Student Foundation is a visible force both on and off campus. The work of the Foundation's one hundred members comes together into some of the most exciting events on campus each year. The 1981-82 Foundation celebrated its tenth year with a record-setting Sustentation Telefund of \$265,000, and with Peruna's Fiftieth Birthday Festival.

While Foundation members were excited about making history at SMU, the group continued to sponsor traditional Foundation events like Parents' Weekend, Homecoming Week with the selection of Homecoming Queen and the Homecoming Parade, Brother-Sister Round-Up, the Christmas Celebration of Lights, Mustang Dayent Fellowship Group

Begun by students, built by students, run by students, S.F.G. offers singing, fellowship, prayer, and messages every Wednesday night at 9:30 in the Student Center. The thrust is friendship, love, and Jesus Christ. Come and share with us!

### SMU Students' Publishing Company

Publishes the daily newspaper, yearbook, literary magazine, and directory as well as being responsible for KSMU radio. Any student may work on publications—editors are selected by the Publishing Board.  
Daily Campus:

The Daily Campus is a four-day a week college newspaper serving the needs of the SMU community. The newspaper is distributed to 35 locations on campus before 7 a.m. each morning, and is staffed entirely by student reporters and photographers. The Daily Campus has been awarded an All-American rating by the Associated Collegiate Press—an award given to approximately 2% of all college newspapers in the nation. Call 692-2164 for more information.  
KSMU:

Start the year off right with the new sound of KSMU! The radio station is now broadcasting FM to all university dorms and is located in the Student Center. KSMU is always looking for new people—announcers, disc jockeys, news announcers, and ad salespersons. Their phone number is 692-2158.

Espejo:  
The Espejo is SMU's literary magazine which offers student writers, artists, and photographers the opportunity to show their talents. Check with the Students' Publishing Office for more info by calling 692-2161.

Rotunda:  
The Rotunda is a real tradition at SMU. Rated as one of the top yearbooks in the nation, the yearbook is published each year in September (for the previous year) and contains all the events, classes, sports, and even graduation. For all the details, call 692-2159.

### SMU Real Estate Club

Want to know how to spot a good deal in the real estate market? Come to the SMU Real Estate Club meetings and learn all about it. They provide opportunities for discussion and lectures in the various areas of Real Estate with leaders of the industry. It's open to anyone interested in Real Estate (and who isn't these days?).

SM  
Th  
ship  
Camp  
divid  
thos  
appl  
tutor  
Cent  
Stud  
  
SM  
He  
you'  
level  
Wat  
nam  
and  
swin  
skill  
nour  
  
Th  
St  
the  
scl  
brin  
scl  
stur  
plur  
  
So  
S  
judi  
bler  
ty, #  
Clu  
in S  
tere  
  
Sp  
h  
war  
Spe  
pra  
me  
nat  
tac

## SMU Tutoring Service

The SMU Tutoring Service, under the leadership of Panhellenic, IFC, Student Senate, and Campus Ministries Council, coordinates individuals who wish to tutor in specific areas with those students in need of tutoring. Names and applications of both tutors and those being tutored are kept on file in the Student Activity Center. Interested students should contact the Student Activity Center, 692-3540 or 692-3541.

## SMU Water Polo Club

Had some experience in water polo? Feel you'd enjoy playing quality polo at the college level? You've come to the right place. The SMU Water Polo Club competes in many large tournaments throughout the Southwest Conference, and provides the perfect opportunity for ex-swimmers to stay in shape while developing new skills and friendships. Watch for announcements in The Daily Campus!

## The Society of Physics Students

SPS is a national organization designed for the promotion of the natural and applied sciences. The society's primary concern is to bring students in close contact with leading scientists, the faculty of SMU, and other students. A sincere concern for the sciences plus a \$7.00 fee is required for membership.

## Sociology Club

Sex discrimination! Abortion! Gay rights! Prejudice! Crime! Desegregation! All these are problems and situations that exist in today's society, and are some of the issues that the Sociology Club discusses. You don't have to have a major in Sociology to join...all you have to have is an interest in today's world.

## Spanish Club

Need to brush up on your Spanish, or just want to learn more about it? No problema! The Spanish Club offers students an opportunity to practice Spanish, and holds weekly "tertulia" meetings. They also sponsor films of interest to native speakers and students of Spanish. Contact the Spanish Department for more info.

## Student Fellowship Group

Begun by students, built by students, run by students, S.F.G. offers singing, fellowship, prayer, and messages every Wednesday night at 9:30 in the Student Center. The thrust is friendship, love, and Jesus Christ. Come and share with us!

## Swim Team Timers

Now here's a unique way to back SMU's best intercollegiate team! The Swim Team Timers help all home swimming meets run smoothly and provide enthusiastic support for the team. Dedicated and interested persons are eligible for membership if they are willing to time the meets. So, synchronize your watches and...Ready, Set, Go!

## Tau Beta Pi

is a national engineering honorary composed of qualified undergraduate students of Electrical engineering. These students are distinguished by scholarship, activities, leadership, and exemplary character. Members are active in fostering these qualities through services which benefit other engineering students, such as free tutoring services for all students of engineering and science classes.

## University Chapel Campus Ministry

revolves around Sunday dinners with programs, and a newsletter which the Chaplain's office produces. It is a diverse group which enjoys camping, going to movies, playing games, learning about different faiths, discussing current events, sharing concerns, and gathering in a warm, informal setting.

## United Methodist Campus Ministries

is a ministry with students at SMU sponsored by The United Methodist Church through its connective agencies and five local churches. It provides Bible study and Faith Dialogue opportunities in dorms and in sorority and fraternity houses, shares information about local church

ministries, and brings a Christian witness of the Church to the campus. Contact the Chaplain's Office for more information.

## Women In Communications, Inc.

"...to protect a free and responsible press...to promote the advancement of women in the communications profession." WICI is one of the nation's oldest, largest, and most rapidly growing professional communications organizations, with a long tradition of professionalism, leadership, and involvement by more than 9,000 members. Open to SMU students. Contact Liz Hale at 692-5390 or Lisa Taylor at 389-0393 for details.

## Women in Management

The goals of the Women in Management organization are to integrate women, undergraduate and graduate, into the business school program and to facilitate their entry or advancement within the business world. Activities include an orientation retreat, social interaction and workshops throughout the year, and community interaction. Membership is open to all SMU students.

## Women's Interest Coalition

is open to all men and women who share concerns and interests related to women. WIC sponsors courses in such diverse topics as Financial Planning, Women and the Draft, ERA and Human Sexuality. Important branches of WIC are the Women's Symposium, held annually, and the Returning Students Group.

## Young Americans For Freedom

YAF is the nation's largest conservative youth organization. YAF continues in its purpose to provide young people with the philosophical motivation and political orientation which will enable them to effectively lead the cause of freedom. YAF provides the means whereby like-minded young conservatives can get together and exchange ideas.

bio 'd'

smu student codes



## Young Democrats

You know them, they're the ones with the donkey, not the elephant! Young Democrats seek to further interest and participation in American political and governing processes on the SMU campus as well as in the principles of the Democratic Political Party. All students are invited to join.

## Zeta Phi Eta

is a national professional fraternity in the communication arts and sciences. All students in Speech, Drama, Journalism, Broadcast Film, Art, or Communicative Disorders are welcome to join this honorary organization. Zeta Phi Eta also provides a national job search service for members looking for employment upon graduation.

**For information on the following clubs, contact the Office of the Dean of Student Life, or your faculty advisor.**

Arab Student Association  
 Association for Computing Machinery (SMU-ACM)  
 Baha'i Club  
 Baptist Student Union  
 Criminal Justice Club  
 Economics Club  
 Field Hockey  
 Highland Park Presbyterian Church  
 Italian Club  
 Mustang Fencing  
 Omicron Delta Epsilon  
 Organization of African Students  
 Phi Alpha Theta  
 Sigam Delta Pi  
 Skillman Church of Christ  
 SMU Racquetball Club  
 SMU Wrestling Club  
 Students for Democratic Participation  
 Young Life Leadership Training

## Greek Life at SMU

SMU offers a quality of Greek Life unparalleled by few universities. There are twenty-seven different fraternities and sororities from which to choose, all of which are strong national

organizations that perform many community service and charity functions. Incoming freshmen are exposed to the Greek lifestyle throughout the Fall Semester; however, Formal Rush does not take place until January.

The unusually high percentage of undergraduate Greeks at SMU is a credit to its quality of life and success. The fraternity and sorority systems allow a student to associate with brothers and sisters whose friendship often lasts a lifetime. Intramural competition, opportunities for leadership, personal growth, and above all friendship are but a small sampling of the entities offered by SMU's Greeks.

The governing bodies for the Greek systems at SMU are the Interfraternity Council (IFC) and Panhellenic.

## Interfraternity Council (IFC)

IFC is the coordinating and administrative body for SMU's 14 fraternities. The IFC President's Council—composed of Presidents of all member fraternities acts as the main legislative body. The IFC Executive Committee is comprised of five popularly elected and three appointed offices.

President—John Hennessy  
 Vice President—Robert Anderson

Rush Director—Richard Martin  
 Treasurer—Bucky Brooks  
 Secretary—Bill Adams  
 Programs—Scott Bedford  
 Scholarship—Bob Bragg  
 Public Relations—Pat Waldschmidt

## Panhellenic

The SMU Panhellenic Association is comprised of all members of the 12 sororities. The Panhellenic Council consists of an elected delegate from each sorority on campus, as well as a representative executive board. The Panhellenic Council meets regularly to discuss issues, hear concerns, and set policies for the entire sorority system. The Sorority Presidents' Council also meets regularly to discuss problems and review up-coming programs. The SMU Panhellenic Council is involved with the planning and leadership of the SMU Tutoring Service, the SMU Advisory Health Committee, Greek Week, Service Projects, Leadership Workshops, Guest Speakers, Rush, and All-Campus Events.

President—Jennifer Clement  
 Vice-President—Robin Daniels  
 Rush Chairman—Brooks Lanham  
 Secretary—Heather Evans  
 Treasurer—Kaylee Brennan  
 Programs Chairman—Leigh Ann Banta



# student government



The SMU student body is represented within the university and to the outside community by the Student Senate and its officers. The Senate's powers and authority are established in the Student Body Constitution.

The function of the Senate is to govern the student body and represent the student body in all university decisions. The University has given Student Senate the sole responsibility to allocate the Student Activity Fee, adopt and enforce the Student Code, and recognize all student organizations. The Student Senate also has the responsibility to fund and coordinate the programming and activities of all student groups on campus.

The Student Government membership consists of approximately 300 students. The opportunities are varied and substantial.

## STUDENT SENATE AND STUDENT OFFICERS

The student body officers consist of a President, Vice President, Secretary, and Treasurer.

The President, Vice President, and Secretary are elected by a majority vote of the student body. The treasurer is appointed by the President.

The Student Senate consists of 36 Senators elected from each school of the university or at large, and the Student Body Officers.

Senators from each school (Arts, Business, Dedman College, Engineering, Law, and Theology) are elected on a formula of one senator for every 300 students enrolled in the school. In September, the Freshman Class elects 4 freshman representatives.

In addition there are 7 at large senators representing the Advisory Board to the Provost, Black students, Mexican-American students, international students, and Women students. These representatives ensure all students access to student government.

## SENATE COMMITTEES

All students are encouraged to apply for one of the fourteen Senate Committees. These committees are composed of students, and student senators, who have the responsibility for various

areas that affect student life. Any student may apply for committee positions in the Student Government Office during September. All applicants will be interviewed by the Screening Committee, and recommendations will be made to the Student Body President for appointments. The Student Senate has several Standing and Ad Hoc committees including:

**APPROPRIATIONS COMMITTEE:** allocates over \$250,000 of the Student Activity Fee to student organizations with Senate approval.

**CLASS COUNCIL COMMITTEE:** coordinates the efforts of all four Class Councils and provides interaction for the development of ideas and strategies for each council.

**COMMUNICATIONS COMMITTEE:** charged with making the student body aware of the Senate and its actions.

**ELECTION COMMITTEE:** coordinates and runs the student body elections whenever required.

**FINANCE COMMITTEE:** coordinates with the Student Body Treasurer all financial records of the Senate and is in charge of all financial records of recognized student organizations.

**INTERNAL AFFAIRS COMMITTEE:** charged with reviewing the internal control and operations of the Senate.

**ISSUES AND GRIEVANCES COMMITTEE:** offers students an outlet for student complaints and concerns. Grievance forms are available in the Student Government Office.

**MUSTANG COMMITTEE:** coordinates special projects that promote spirit for the SMU Student Body especially concerning homecoming activities.

**POLLING COMMITTEE:** offers SMU Students opportunities to express their views on particular Student Senate legislation or special projects.

**SCHOLARSHIP COMMITTEE:** responsible for developing, interviewing, and awarding scholarships from Student Senate monies. Additionally, they work in conjunction with the Finance Committee for the SMU Student Endowment Foundation to provide strategy for further student scholarships.

bio "d"

smu student codes

**SCREENING COMMITTEE:** recommends to the Student Body President qualified individuals for the Senate committees.

**STUDENT CODE COMMITTEE:** revises the Student Code, upon approval of the Senate.

**STUDENT HANDBOOK COMMITTEE:** coordinates the publication of *The Peruna Express*, the student handbook.

**STUDENT ORGANIZATIONS COMMITTEE:** recommends to the Senate the recognition of student organizations and established minimum standards of operation.

Students can also serve on Faculty Senate Committees (Athletics, Commission on the Status of Women). These appointments are made by the Student Body President, and all interested students should contact the Student Government Office in September regarding these positions. The office is located on the ground floor of the Student Center in the Student Activity Center. Student Association phone numbers are listed below.

## ELECTIONS

are held in the Spring for all positions except for Freshman Representatives who are elected in the Fall of each year.

## APPOINTMENTS

All student body appointments are made by the Student Body President after recommendation from the Senate Screening Committee and the Student Senate.

### Officers:

President—Joe Dooley, 692-2260

Vice President—Homer Reynolds, 692-2973

Secretary—Kyra Lee, 692-2973

Treasurer—Skip Gumble, 692-2429

### Senators:

Arts: Sheri Goldstein  
Sally Reed  
David Gaines

Business: Laurie Coleman  
Cynthia Johnson  
Bill Fay  
Jim Case  
John Hennessy

Dedman College: Phil Doepfner  
Melanie Gee  
Todd Alan Smith  
Kurt Lord  
David Stokes  
Ted Brabham, Jr.  
Todd Armstrong Smith  
George Parker

Engineering: Martha Stocks  
Hector Reyes  
Rose Keagy  
Carol Sickler

Law: Larry Smith  
Jim Adams  
Andy Wagner

Theology: Charles Carnaham  
Phil Webb

Provost: Phil Latka

Blacks: George White, Jr.

Mexican American: Rogelio Chaparro

International: Arif Virji

Women: Suzanne Shankle

Advisor to Student Government—  
Katie Gallagher, 692-2448

## GRADUATE ORGANIZATIONS

### Graduate Council

This council facilitates the interaction of graduate students, represents graduate student interests, and serves as an intermediary between graduate students, the administration, and the student senate. The council meets twice a month with a representative from each graduate school.

### Student Bar Association

All students enrolled in the SMU School of Law are members of the Student Bar Association. The SBA seeks to contribute to the improvement of the legal profession and to advance the best interests of legal education at SMU. The SBA plans activities designed to promote the academic, professional, and social well being of law students at SMU. More info about

activities posted in Underwood Law Library Lobby.

### Other graduate organizations include:

Humanities and Sciences Graduate Student Assembly.

Meadows Graduate Student Council.

SEAS Graduate Student Council.



...FUN...S  
MUSIC...T  
DANCE...!

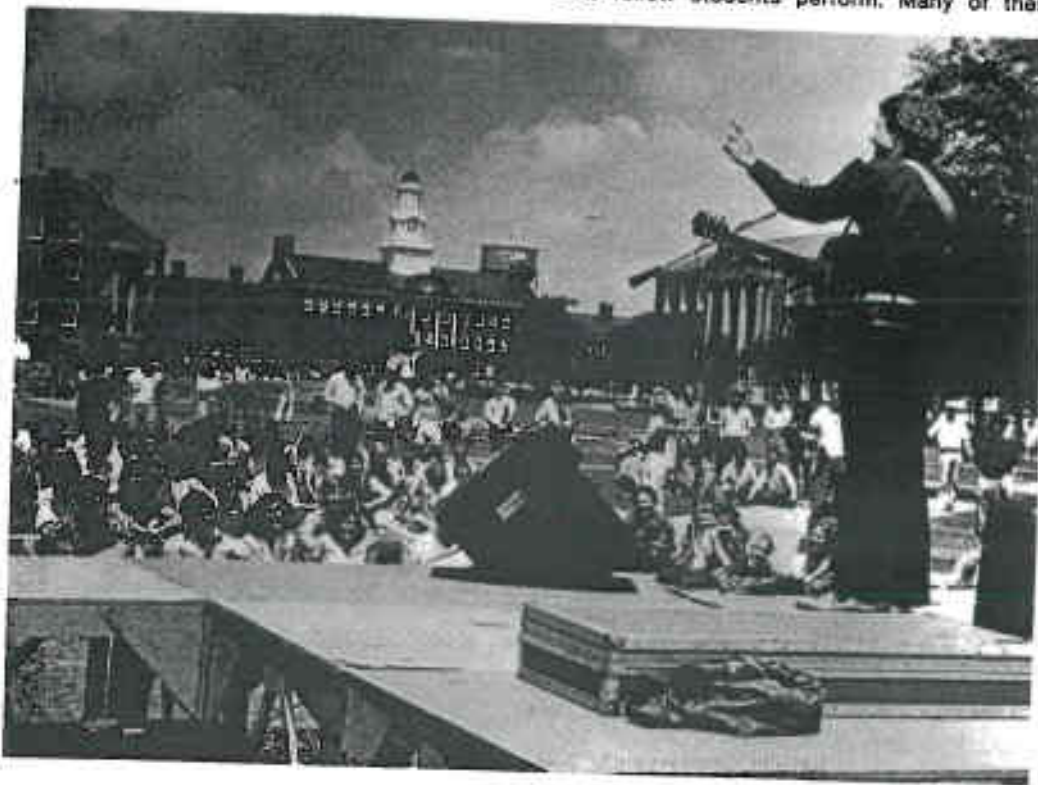
You will have fun  
SMU is full of a  
types of people.  
everyone's lifestyle  
varieties of music  
symphonies, a  
facilities to keep  
tantly, places to  
So...for those of  
revel in sports, it  
for you.



# look what's happening

...FUN...STUDY...ARTS...  
MUSIC...THEATRE...  
DANCE...FILMS...

You will have time to do all these and still sleep! SMU is full of activities that will appeal to all types of people. The campus is ready to cater to everyone's lifestyle. There are museums at SMU, varieties of music such as rock concerts and symphonies, sports events, recreational facilities to keep you in shape, and most importantly, places to go and relax or just have fun. So...for those of you who enjoy culture, and/or revel in sports, there is something here at SMU for you.



## Culture at SMU

### Theatre

From classics to contemporary, Theatre SMU is one of the most exciting and innovative programs included in the League of Professional Theatre Training Programs. Every spring the seniors travel to New York to audition for parts in major productions in areas of acting, designing, and directing. These students work for years in hopes of one day becoming part of a production.

Theatre SMU offers students at SMU a chance to see fellow students perform. Many of these

students are the future stars of the stage. During the year, there are five theatre productions and two showcase productions. The performances take place in both the Bob Hope and Margo Jones Theatres. The productions are very reasonably priced and are a very good form of entertainment.

Many students have worked hard both on stage and behind the scenes to make these productions possible. Many hours of work and dedication have been put into making the productions a success, so we recommend that you take a few hours of your time and support Theatre SMU! For information, call 692-2573.

### Films

During the course of a year, there are two film festivals, one in the fall and one in the spring. The films shown during these festivals range from classics to modern films that come from the Southwest Film Archive. This archive is located here on the SMU campus and contains over 7000 prints, many of which are the last surviving print. It only costs \$2.00 with an SMU ID to attend a film festival, so we hope we'll see you there!

### Art

SMU is also fortunate to have in its possession a rich collection of Spanish and Ibero-American art. The Meadows Gallery contains the works of many famous Spanish artists such as Greco, Goya, and Velazquez. Our museum is the only one outside of the New York Metropolitan to own three Velazquez paintings. The Gallery is open Monday thru Saturday from 10:00 a.m. to 5:00 p.m., and Sunday from 1:00 p.m. to 5:00 p.m. Admission is free, and tours are available upon request. Call 692-2853 for details.

### Music

For those who like all kinds of music, SMU has several different performing groups. The Con-

bio "d"

smu student codes

noisseur Concert Series will appeal to those who like classical music. Admission to these concerts is only a dollar, and it is a good chance for you to hear classical music. There are many other bands and types of music on campus: Jazz, Chamber Orchestra, Music Consort, and others. So if you're interested in different types of music, there is something for you at SMU.

1982-1983 Art School Events

September	10-12	Cinemateque
	17-19	Cinemateque
	8-10	Undergraduate Dance Production in the Margo Jones Theater
	21-24	Theatre Production in the Bob Hope Theater
	25	Dallas Chamber Music
	28-31	Theatre Production in the Bob Hope Theater
November	5 & 6	Dallas Opera
	5-7	Cinemateque
	10	Dallas Opera

	9-14	Theatre Production
	12-13	Martha Graham Company Production in McFarlin
	12-14	Cinemateque
	16-21	Theatre Production in the Margo Jones Theater
	19	Martha Graham Award in the Bob Hope Theater
	19	Dallas Opera
	20-21	Cinemateque
	24	Dallas Opera
	27	Dallas Opera
December	2-5	Theatre Showcase in the Margo Jones Theater
	2-5	Fall Dance Production
	2	Dallas Opera
	5	Dallas Opera
	6	Goya Reception and Dance in Caruth
	7	Goya Symposium from 9 to 5 in Caruth
	8	Dallas Opera
	11	Dallas Opera
	15	Dallas Opera
	17	Dallas Opera

	January	17	Dallas Opera
		21-23	Dallas Chamber Music Cinemateque
	February	1-3	Theatre Production in the Margo Jones Theater
		6-8	Theatre Production in the Margo Jones Theater
		4-6	Cinemateque
		13	Theatre Production in the Margo Jones Theater
		14	Dallas Chamber Music
		18-20	Graduate Dance in the Bob Hope Theater
		24-27	Theatre Production in the Margo Jones Theater
	March	3-6	Theatre Production in the Bob Hope Theater
		21	Dallas Chamber Music
		23-27	Dallas Opera in the Bob Hope Theater
		31	Broadcast-Film BJ from 7 to 9
	April	7-10	Theatre Showcase
		11	Dallas Chamber Music
		15-17	Dance '83' in the Bob Hope Theatre



cc  
U  
th  
cc  
in  
er  
  
10  
til  
hc

Apr  
  
May  
  
S  
SA  
na  
rai  
all  
pri  
  
SA  
wc  
re  
St  
fin  
tw  
SA  
tio  
pr  
  
Th  
tee  
St  
me  
Th  
the  
to  
  
Th  
ou  
co  
tio  
wil  
me  
wo  
de  
se  
tee  
wir

	21-24	Dance '83' in the Bob Hope Theatre
April	20	Honor's Day
	26-1	Theatre Production
	25	Broadcast-Film in the Bob Hope Theater
	29-1	Cinematheque
May	3-8	Theatre Production in the Bob Hope Theater
	6-8	Cinematheque

## SMU Sports

SMU has one of the best athletic programs in the nation. Last year the Mustangs sports program ranked eighth among all the collegiate teams in all sports and was first among the nation's private institutions.

SMU finished fifth in the country in football and won the Southwest Conference title with a 10-1 record! The home games are played at Texas Stadium in Irving. The Mustang track team finished second and fourth in the nation the past two years in the Indoor championship, and SMU's tennis team ranked number one in the nation for much of the spring and is one of the top programs in America.

The swimming team at SMU is one of the top five teams in the country annually, and swimmer Steve Lundquist was the top scorer at the 1982 meet with two first places and a second place. The Mustang soccer team annually finished in the nation's Top 20s and is a powerhouse in the tough Midwest division each year.

The women's sports programs at SMU are outstanding. The golf team has finished first, second, and third the last three years in the national AIAW tournament and has provided SMU with its first national championship since the men's team won the NCAA golf title in 1954. The women's tennis team has been strong for a decade, and the women swimmers finished seventh nationally. The women's basketball team posted its best record in history with 18 wins and a third place state finish in 1982.

Moody Coliseum hosts the home games of the men's basketball team, and the track team competes at Morrison-Bell Track on the SMU campus. Both men's and women's tennis teams play their home matches at the Haggard Courts on the campus, while the soccer team uses Ownby Stadium. Men's and women's swimming teams use Perkins Natatorium for indoor meets and the Olympic size Barr Pool for outdoor practice and national AAU meets.

Students can purchase football and basketball season tickets during fall orientation and at registration. These tickets are available at a substantial discount from the gate prices. A valid ID will allow students admission to all other SMU athletic events on campus.

## 1982 Football Schedule

Sept. 11	Tulane	Home	7:00 p.m.
18	UT El Paso	Away	7:00 p.m.
25	TCU	Home	7:00 p.m.
Oct. 2	N. Texas St.	Home	7:00 p.m.
9	Baylor	Away	7:30 p.m.
16	Houston	Home	7:00 p.m.
23	Texas	Away	1:00 p.m.
30	Texas A&M	Home	1:30 p.m.
Nov. 6	Rice	Away	2:00 p.m.
13	Texas Tech	Away	2:00 p.m.
20	Arkansas	Home	7:00 p.m.

## Meet Bobby Collins, Our New Football Coach

Many people on campus this fall are excited at the excellent prospect of the SMU football team winning another Southwest Conference Championship. Our new coach, who will guide them in this endeavor, is Bobby Collins. Coach Collins was reared in Laurel, Mississippi and quarterbacked the Mississippi State team during his college years. Following his graduation in 1955, he coached at Colorado State, Mississippi State, George Washington University, Virginia Tech, and the University of North Carolina. During his eight years at UNC, he was in charge of the offense for five years, and for three of those five

years, the Tar Heel's led their conference in total offense and scoring. His final three years at UNC were spent as defensive coordinator and assistant head coach. Coach Collins left UNC to accept the head coaching job at the University of Southern Mississippi, where he had several successful seasons including the 1981 season, when he had a 9-1-1 record and made a trip to the Tangerine Bowl.



Bobby Collins, who had never been to Texas before accepting his current position, is enjoying the friendliness of the people in this state, and he is happy to be a part of the Southwest Conference. He is also eager to see the 1982 SMU Mustangs strongly supported by the students, faculty, and community, because he understands the inspiration such support gives to a great team!

bio "d"

smu student codes

## Recreational Facilities

### Dedman Center for Lifetime Sports

The Sports Center, completed in January 1976, was built to encourage participation in various lifetime sports by SMU students, faculty, and staff. The facility includes a main playing area which consists of three basketball courts, or four volleyball courts or nine badminton courts. There is a weight room with Universal gym equipment, a complete gymnastics room, and six handball/racquetball courts. A tartan-surfaced jogging track is located upstairs along with classrooms and a dance room. A parking garage and the men's and women's locker facilities are housed downstairs. An SMU ID card will be needed to enter the Dedman Center, and

to check out any equipment. For more information, call 692-3367.

#### Hours:

##### School year—

Monday thru Friday	8:00 a.m.—10:00 p.m.
Saturday	9:00 a.m.—6:00 p.m.
Sunday	1:00 p.m.—6:00 p.m.

##### Summer—

Monday thru Friday	8:00 a.m.—6:00 p.m.
Saturday	1:00 p.m.—5:00 p.m.
Sunday	Closed

The Dedman Center will be closed during home football and basketball games and on other special occasions. An Olympic track is available west of Dedman Center.

### Court Reservations

All tennis reservations must be made in person with an SMU ID card. Handball and racquetball reservations may be made by phone. Reservations are made one day in advance in the Dedman Sports Center during the following hours Monday through Friday:

8:30 a.m.—11:30 a.m.
1:00 p.m.—4:40 p.m.

692-3374

On Fridays, reservations will be made for Saturday, Sunday and Monday

### Recreational Equipment

The following equipment may be checked out with an SMU ID card: basketballs, footballs, soccer balls, softballs, bats, gloves, volleyballs, badminton racquets, shuttercocks, racquetball racquets, tennis racquets, badminton and volleyball nets and other equipment. Students are en-



*The Hilltop Cafe*

Umphrey Lee Student Center

Drinks  
Frogurt  
Breakfast Items

Sandwiches  
Salad Bar  
Grill Line  
Self-service Line

couraged  
quets ar  
Students  
all equipr

### Swimr

Barr Out  
tober 26  
students.  
p.m. to 4:  
to 5:00 p:  
and Binkl

The Perk  
pool, is o  
winter m  
unschedt

### Tenni:

A total o  
dent uni  
courts ar  
adjacent  
four cour  
block aw  
the intrz  
some co



couraged to purchase their own racquetball racquets and balls as these damage easily. Students are personally and financially liable for all equipment checked out.

### Swimming

Barr Outdoor Pool is open April 3 through October 26 and is free of charge to all SMU students. Hours are Monday thru Friday 12:30 p.m. to 4:30 p.m. and Saturday and Sunday noon to 5:00 p.m. It is located on the corner of Bishop and Binkley.

The Perkins Natatorium, the indoor swimming pool, is open in the evenings during the fall and winter months for SMU students. The times are unscheduled at present.

### Tennis

A total of 12 tennis courts are available for student use and are located on campus. Five courts are located in the Haggard Tennis Complex adjacent to Moody Coliseum with an additional four courts located in the "Varsity Complex" one block away. Three tennis courts are located on the Intramural field. Lighting is provided on some courts until 10 p.m.

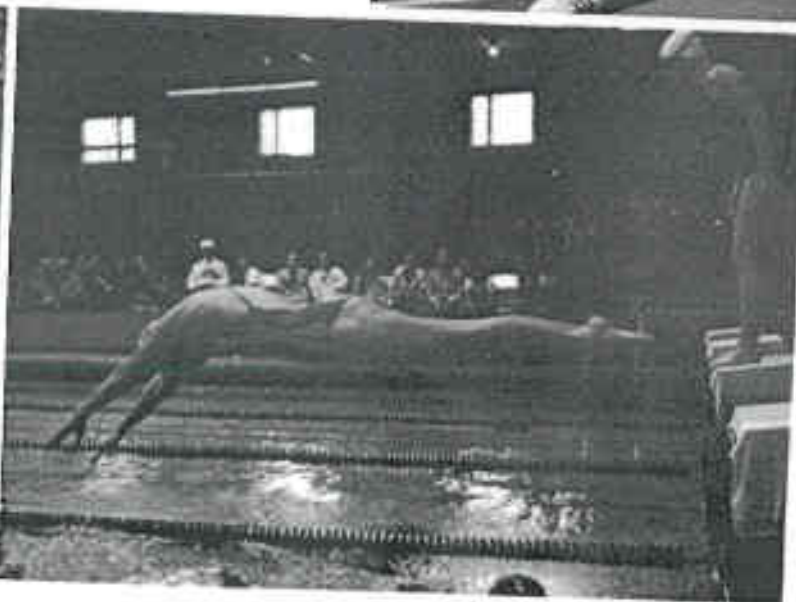
For information and a list on Intramural Rules, (eligibility guidelines), go by the Intramural Office in Dedman Center.

### Officials

Perhaps the most difficult task in any Intramural Program is officiating an activity which involves one's own friends or peers. But each year students who get paid approximately \$3.00 per game officiate touch football, basketball, volleyball, soccer, softball, and other activities. Students are always encouraged to sign up for officiating in the Intramural Office. Often additional jobs are available outside the University, such as city leagues, church leagues, schools, and industrial leagues. This is certainly a very necessary segment of the Intramural Program, and all the participants are indebted to the officials.

### Intramural Facilities

Moody Coliseum is available for some Intramural activities. The Intramural Department has access to four football fields, three softball fields, two soccer fields, and twelve tennis courts.



bio "d"

smu student codes



# academics

Wondering where to go to drop or add a course, how to go about getting a transcript, or find out how the grading system works? Well, here's a section that will help you out. We tried to include everything we could think of that you might need to know, but if you still have a question about the Academic side of life at SMU you can check with your faculty advisor or call the Registrar's Information number. It's 892-2044.

## ACADEMIC PROBATION

Students with less than a 2.00 average in any semester will be placed on academic probation. This means the student will probably only be allowed to take a maximum load of 12 hours. A student who does not attain at least a 1.00 average will be dropped from the university.

## ADVANCE SCHEDULING

Scheduling occurs near the end of the semester. Students should consult an advisor to get a signed study list card. On the day of advance scheduling, students should go to the individual departments to sign up for the course. However, students who have completed advance scheduling must still attend registration at their assigned times or they will not be officially registered in the university.

## AUDITING

Auditing a course is when a student visits a class but gets no grade or credit. Students must obtain permission from the instructor and their academic dean, and then pay the cashier a fee before they can officially audit a course.

## DOUBLE MAJORS

Students can simultaneously earn two baccalaureate degrees from two schools of the university with approval of the academic dean and the Provost. Since the requirements for both degrees must be met, students should meet with advisors in both schools at an early date to prepare a proposed plan of study.

## EXPLANATION OF COURSE NUMBERS

The four digit number before a course title is the course number. The first digit indicates the level of the course. The second digit indicates the number of semester-hours received for the course. The third and fourth digits indicate the course for the departments.

## GRADING

Grades in any course are determined by the students' class standing and his examination grade, combined in any way the instructor wishes. Class standing is determined by attendance and the quality of the students work.

SMU is on a 4.0 grading system: A+, A, A- = 4; B+, B, B- = 3; C+, C, C- = 2; D+, D, D- = 1; F = 0.

Ten other grade symbols and numeric symbols are used. Students should refer to the general Information Catalogue for an explanation of all grades used.

Pluses (+) and minuses (-) are recorded on the student's permanent record but do not affect his grade point average.

## GRADUATION

Seniors must file an Application to Graduate form with their academic dean during their last semester at SMU. Applications should be filed by the deadline date in the University Calendar. A fee will be charged for late application.

## INTERNATIONAL PROGRAMS

The university offers students the chance to live and study abroad. Regular programs are maintained in Paris and Madrid. Winter interterms are offered in Mexico, England, France, Germany and Russia. Summer programs are offered in Austria and England.

## NAME AND ADDRESS CHANGE

All legal name changes should be reported to the Registrars Office. Students will need a cer-

tified copy of the legal document or a notarized affidavit. Also all local and permanent address changes should be reported to the Registrars Office for mailing purposes.

## PASS/FAIL

Students may take courses Pass/Fail. This means the students will get no grade, only a recorded pass or fail. Courses in your major or courses required for graduation may not be taken pass/fail. Students should always consult their advisor before taking a course pass/fail.

## PRIVACY ACT

The family Education and Privacy Act of 1974 is a federal law that gives students the right to inspect, to obtain copies of, to challenge, and to a degree control, the release information contained in his or her educational records. Guidelines of the act are available in the Dean of Student's office.

## SCHEDULE CHANGES

Students can add courses, drop courses, and change sections without grade record or tuition billings through a specified day in the fall and spring. Adds and drops cost \$5.00 each. Currently there is no charge for section changes.

After the add/drop period, courses can be dropped "Withdraw Passing" (WP) or "Withdraw Failing" (WF) to a certain date.

## TRANSCRIPTS

Transcripts are available on request from the Registrars Office, Perkins Administration Building. Transcripts cannot be released unless all financial and other obligations to the University are satisfied.

## TRANSFERRING SCHOOLS WITHIN THE UNIVERSITY

Students must apply to the dean of their present school-of-record. Several weeks after the application is filed, students should call the deans office of their new school to see if the records were received.

## UNIVERSITY

are selected a before the junior year. These students a program which is t cerns and needs. I ply to Franklin B. gram.

## UNIVERSITY DEANS

Meadows Scho  
Dean's Office  
F-124  
Eugene Bonelli,  
William Lively, A  
Office of Public Re  
Patricia Porter, F

## Wedding

# C

(a)

## Personali

## UNIVERSITY SCHOLARS

are selected after the freshman year and before the junior year for academic achievement. These students are put in a special academic program which is tailored to their individual concerns and needs. Interested students should apply to Franklin Balch, coordinator of the program.

## UNIVERSITY DEANS

### Meadows School of the Arts

Dean's Office	
F-124	2600
Eugene Bonelli, Dean	2880
William Lively, Associate Dean	3217
Office of Public Relations	
Patricia Porter, F-116 OAC	3510

### Cox School of Business Administration

Dean	
Roy Herberger, Dean's Suite, Fincher	3012
BBA Program Director	
Betsy Bayer, Rm 102 Fincher	3000
MBA Program Director	
Judy Johnson, Rm 34 Fincher	2609

### School of Engineering and Applied Sciences

Dean	
Robert R. Fossum, 115 Caruth	3051
Associate Dean	
William F. Leonard	3050
Associate Dean of External Affairs	
Edward O. Coultas	2644



Wedding Invitations

Picture Frames



# CARD NOOK

6403 Hillcrest

(across from Umphrey Lee Student Center)

528-8955

Personalized Stationery

Sorority Gifts

### Dedman College

Dean of Dedman College	
R. Hal Williams, 203 Dallas Hall	2192
Associate Dean for General Education	
Michael R. Best, 206 Dallas Hall	2203
Associate Dean for Academic Planning	
Henry L. Gray, 200 Dallas Hall	3212
Associate Dean for Student Academic Affairs	
O.T. Hargrave, 109 Clements Hall	2291

### School of Law

Dean	
Jeswald W. Salacusa, Storey Hall	2618
Associate Dean of Academic Affairs	
Henry J. Lischer, Jr., Storey Hall	3380
Associate Dean for Clinical Education	
Walter N. Steele, Jr.	2599
Director of Admissions	
Jean Kyle Jury	2551

### Perkins School of Theology

Dean	
James E. Kirby, 202 Kirby Hall	2138
Associate Dean	
James M. Ward, 215 Kirby Hall	2209
Associate Dean of Admissions	
J.B. Holt, 214 Kirby Hall	2293

bio "d"

smu student codes

# LIBRARY HOURS

## Fondren Library West

Monday—Thursday	8:00 a.m. - 2:00 a.m.
Friday	8:00 a.m. - 10:00 p.m.
Saturday	9:00 a.m. - 10:00 p.m.
Sunday	1:00 a.m. - 2:00 a.m.

### Thanksgiving Holiday:

Wed., Nov. 24: 8 a.m. - 5 p.m.  
 Nov. 25 & 26: Closed  
 Sat., Nov. 27: 9 a.m. - 5 p.m.  
 Sun., Resume regular hours

Regular hours during finals except on:  
 Friday, Dec. 17: 9 a.m. - Midnight

### Easter Holiday:

Will be closed on Easter Sunday

## Fikes Hall of Special Collections (DeGolyer Library)

Monday—Friday 8:30 a.m.—5:00 p.m.

## Law Library

Monday—Friday 7:30 a.m. - Midnight  
 Saturday 9:00 a.m. - 6:00 p.m.  
 Sunday 1:00 p.m. - Midnight

## Bridwell Library of Theology

Monday—Thursday 7:30 a.m. - 11:00 p.m.  
 Friday 7:30 a.m. - 8:00 p.m.  
 Saturday 9:00 a.m. - 5:00 p.m.  
 Sunday Closed

# HOURS AND PHONE NUMBERS

<b>Bookstore</b>	M-F 8 a.m.-5 p.m. Sat 8:30 a.m.-12:30 p.m.	2435
<b>Cafeterias</b>	M-F Breakfast 7 a.m.-9:30 a.m. Lunch 11 a.m.-2:15 p.m. Dinner 4:30 p.m.-6:30 p.m. Sat. 8-10 a.m., 11:30-2 p.m., 4:30-6:30 p.m. Sun. 8:30-10, 11:30-2 p.m.	
<b>Food Service Hotline</b>		2368
<b>Dedman Center</b>	M-F 8 a.m.-10 p.m. Sat 9 a.m.- 6 p.m. Sun 1 p.m. - 6 p.m.	2385
<b>Racquetball and Tennis Reservations</b>	M-F 8:30 a.m. - 10 p.m.	3374
<b>Health Center Clinic Hours</b>	M-F 9 a.m.-noon 1 p.m. - 4 p.m.	2141
<b>Hospital Hours</b>	24 hours a day during regular school session	
<b>SMU Information Language Labs</b>	M-F 8:30-noon 1:00 - 4:30 p.m.	2000 2218
<b>Mental Health Center</b>		
<b>Post Office</b>		
<b>Swimming Pools</b>		
<b>Bar: Outdoor Pool</b>		
<b>Perkins Natatorium</b>		
	M-F 8:30 a.m.-5 p.m. 24-hour Answering Ser M-F 9:00 a.m.-4:00 p.m. M-F noon-5 p.m. Sat noon-6 p.m. Sun noon-6 p.m. M-F 8 a.m.-9:30 p.m. Sat 3 p.m.-6:30 p.m. Sun 3 p.m.-5:30 p.m.	

# EMERGENCY NUM

**Ambulance**  
**Medical Emergency Clinic**  
 5314 Greenville, 8 a.m.-10 p.m.  
**Poison Control (in Fort Worth)**  
**Presbyterian Emergency Room**  
**Rape Crisis Center**  
**SMU Security**  
**Suicide Center**  
**Suicide Hotline**  
**University Park Fire Department**  
**University Park Police**

# THE STUDENT'S STORE FOR

- Text Books—New and Used
- School Supplies
- Stationery
- Gift Items
- Greeting Cards
- Fountain Pens
- School Clothing
- Decals
- Calculators
- and Much, Much More

# S.M.U BOOK STORE

Owned and operated by Southern Methodist University  
*"In the Umphrey Lee Student Center"*

WHERE PROFITS SUPPORT YOUR STUDENT CENTER

"Serving the SMU Community"

692-2435

# trivia & tradition

## VARSITY

Oh, we see the Varsity, Varsity, Varsity  
As she towers o'er the hill over there  
and our hearts are filled with joy  
SMU — SMU  
Alma Mater, we'll be true forever.

## FIGHT SONG

Here's to the Red and the Blue  
We're the Mustangs from SMU  
Give a cheer, give a fight  
There's a victory in sight  
And our battle cry will be  
Fight! Fight! Fight!  
Spirit's the best in the land  
And right to the end we'll stand  
for the M-U-S-T-A-N-G-S  
FIGHT! FIGHT! FIGHT!

SMU colors are Harvard Red and Yale Blue.

Peruna, SMU's miniature pony mascot, comes from the name of a patent medicine made from straight whiskey. The SMU song, "She'll be loaded with Peruna when she comes..." was adapted from an old mountain folk song. In memory of the original Peruna, killed in an accident in 1934, the "Statue of the Spirit of Peruna" was erected at Ownby Stadium.

Veritas liberabit vos — "The truth will set you free" — is SMU's motto. Robert Hyer, the first president of SMU, selected the phrase.

"Varsity" is the alma mater which is sung before the beginning of every game and at other special events.

The Varsity fight song was inspired as composer, Rev. Lewis W. Stuckey, drove down Preston Road on a cold, clear day with a view of Dallas Hall in the skyline.

Homecoming is probably SMU's most well-known tradition. In the beginning there was no election for the Homecoming Queen, she was appointed. The only beauty contest was the campaign for Duchess of SMU which had nothing to do with football. This election was sponsored by the Rotunda and nominees were put up by the various sororities and fraternities (much like the way homecoming is run today).

As late as 1945, classes were dismissed early on Friday in order that everyone could go to the Homecoming parade, and the traditional all school dance was free for everyone.

With SMU being a Methodist university, no dances were allowed until 1940.

SMU was originally named TEXAS WESLEYAN UNIVERSITY in 1911. When the name was changed to SOUTHERN METHODIST UNIVERSITY in 1916, the need for a mascot came. Librarian Dorothy Amann won an all school contest with the "MUSTANGS." The name came to her after watching the football players come onto the field "like a bunch of Texas Mustangs."

The wearing of the "freshman beanie" is an old tradition which has been modified over the years. In the beginning, upperclassmen sold green beanies to freshmen as "traditional freshman wear." If the freshman passed a coed he had to push the button atop his beanie. With the banning of hazing on campus, the beanie disappeared only to return as a tradition carried on by the Mustang Band. All freshman band members wear the red and blue beanie until the SMU football team beats A&M or until the upperclass members decide.

The honor council and honor code is not a new idea to SMU. Way back in 1929, the then present honor council was abolished after it was decided that it was not needed at SMU.

In the beginning of SMU, girls had a very strict social life. Week night dates were allowed only as late as 7 p.m., with the freshman girls allowed

none. They were allowed to date only on Saturday nights if accompanied by a Junior or Senior girl and her date, and only as late as 10 p.m.

Even up until 1971, parents had to sign a release form granting their permission for their child to stay out all night during the week. Girls had to sign out telling where they were going and with whom they went out at night. When they returned, they signed in. If a girl came in too late too many times, she lost the privilege of going out.

Other ways for a girl to lose the privilege of dating during the week was to not make the grades or for her to keep a messy room. Every girl had her room graded for neatness by the dorm mother, and these room grades were letter grades. Guys were allowed in the girls dormitories but only as far as the lobby.

ROTUNDA Beauties used to be chosen by popular vote. Students purchased ballots for a penny a piece, and could purchase as many ballots as they had pennies.

Student Government was permanently organized at SMU on October 9, 1915.

The first airplane landing in the city of Dallas occurred on SMU's campus.

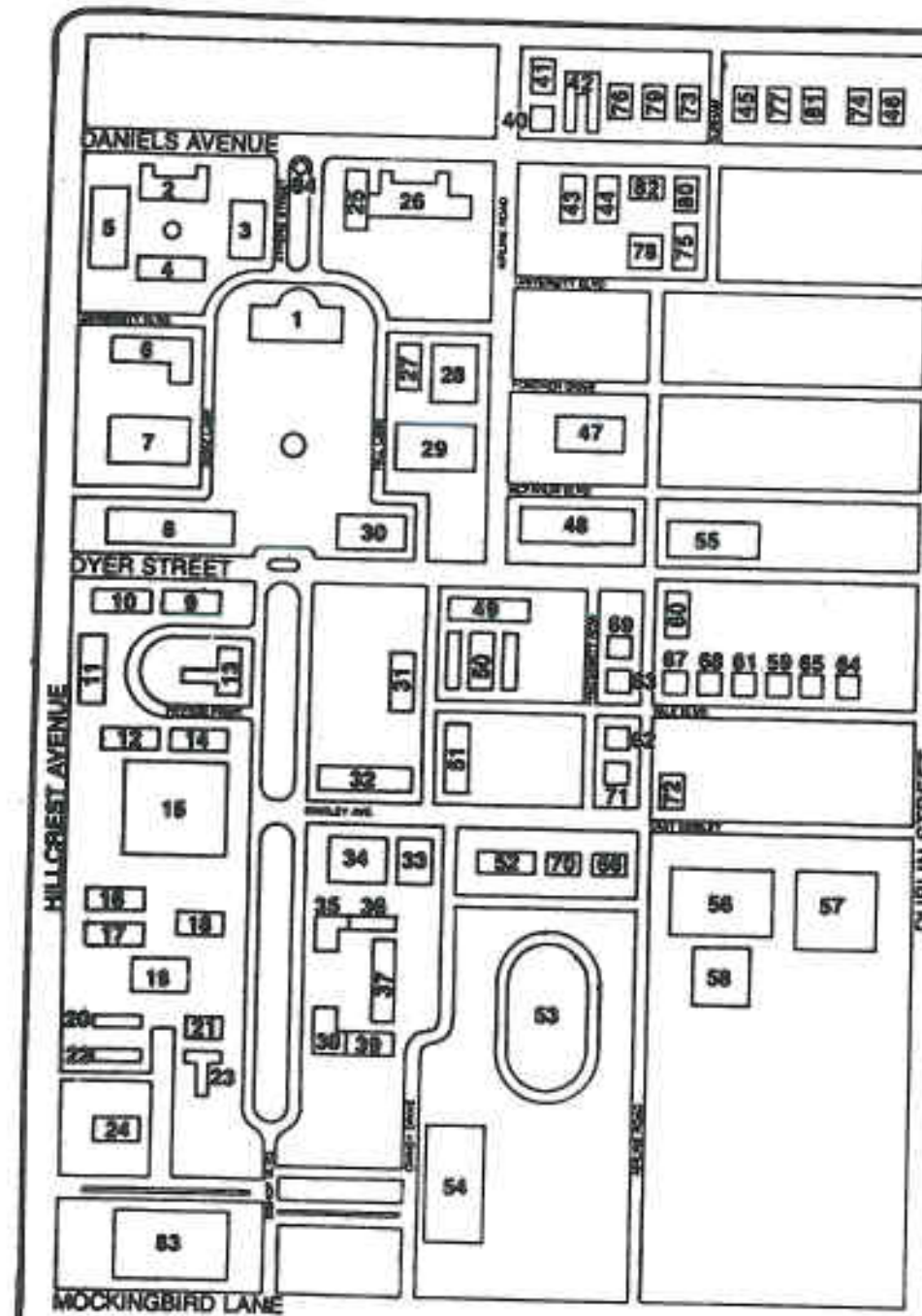
Even before SMU officially opened in 1915, the school newspaper was published. At that time it was called SMU TIMES, later changed to CAMPUS, and finally THE DAILY CAMPUS.

April First, commonly known as April Fool's Day, was known as Piker's Day at SMU where seniors had the run of the campus. It was their last fling at childhood. No Piker's Day was complete without the kidnapping of the senior president by a band of freshmen.

"Powder and Patches" was the traditional girls revue where each sorority presented acts. "Frasity" was the fraternity production.

bio "d"

smu student codes

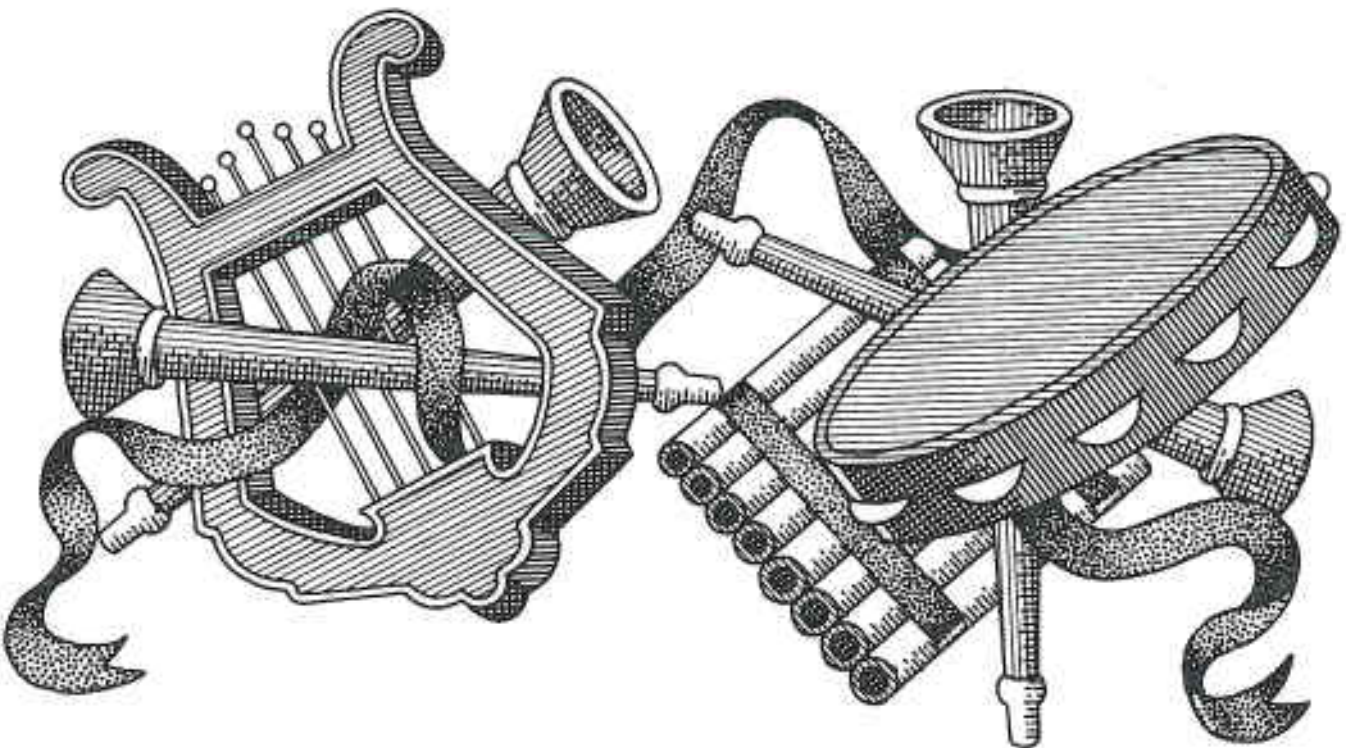


1. Dallas Hall
2. Storey Hall
3. Lawyer's Inn
4. Florence Hall
5. Underwood Law Library
6. Perkins Hall of Administration
7. McFarlin Memorial Auditorium
8. Umphrey Lee Student Center
9. Snider Hall
10. Virginia Hall
11. Shuttles Hall
12. Peyton Hall
13. Memorial Health Center
14. Mary Hay Hall
15. Owen Arts Center
16. A. Frank Smith Hall
17. S. B. Perkins Hall
18. Bridwell Library
19. Perkins Chapel
20. Paul E. Martin Apartments
21. Harper and Annie Kirby Hall
22. Eugene B. Hawk Apartments
23. Sealeman Hall
24. John M. Moore Hall
25. N. L. Heroy Science Hall
26. Fondren Science Building
27. Hyer Hall
28. Science Information Center
29. Fondren Library
30. Clements Hall
31. Joseph Wylie Fincher Memorial Building
32. Boaz Hall
33. A. R. Barr Pool
34. Joe Perkins Natatorium
35. Morrison Hall
36. McGinnis Hall
37. Eugene McElvaney Hall
38. McIntosh Hall
39. Cockrell Hall
40. Daniels I
41. Daniels II
42. Daniels III
43. Daniels IV
44. Daniels V
45. Faculty Club
46. R. L. Thornton Alumni Center
47. Tower Hall
48. Stanley Patterson Hall
49. Caruth Hall
50. Laboratory Buildings
51. W. D. Bradfield Memorial Computing Center
52. Lettermen's Memorial Dormitory
53. Morrison-Bell Track
54. Ownby Stadium
55. Central Services Building
56. Moody Coliseum
57. Haggard Tennis Stadium
58. Dedman Center for Lifetime Sports
59. Alpha Phi Alpha
60. Alpha Tau Omega
61. Beta Theta Pi
62. Delta Chi
63. Delta Sigma Phi
64. Kappa Alpha
65. Kappa Sigma
66. Lambda Chi Alpha
67. Phi Delta Theta
68. Phi Gamma Delta
69. Pi Kappa Alpha
70. Sigma Alpha Epsilon
71. Sigma Chi
72. Sigma Nu
73. Alpha Delta Pi
74. Chi Omega
75. Delta Delta Delta
76. Delta Gamma
77. Gamma Phi Beta
78. Kappa Alpha Theta
79. Kappa Kappa Gamma
80. Pi Beta Phi
81. Phi Mu
82. Zeta Tau Alpha
83. Highland Park Methodist Church
84. Blanton Observatory

campus  
map

smu student codes

big "d"



# culture in big "d"

Obviously, we couldn't put down every type of culture or entertainment found in Dallas, but you can be assured that you'll enjoy any of the suggestions we've listed here. Big "D" offers theatre, ballet, music, art museums, and other museums from which to choose. Half the fun of being in Big "D" is exploring it, and we hope we've given you some guidelines to help you get started.

## Theater

### Dallas Convention Center Theater

650 S. Griffin. Tickets available through Rainbow Ticket Center at 658-7063.

Tues.—Fri.	8 p.m.
Saturday	5 & 10 p.m.
Sunday	3 & 8 p.m.

### Dallas Repertory Theatre

Located in Northpark Mall in the Northpark Center. Reservations and information available by calling 369-8966.

Tues.—Fri.	1—6 p.m.
------------	----------

### Dallas Theatre Center

Designed by Frank Lloyd Wright, Dallas Theatre Center is located at 3636 Turtle Creek. The Theatre houses two main theatres: the Kailita Humphreys Theatre for large productions, and Down Center Stage which seats a limited number of people. Call the theatre for ticket prices and group rates at 526-8857.

Tues.—Thurs.	8 p.m.
Fri. & Sat.	8:30 p.m.
Sat. matinee	5 p.m.

### Theater Three

Located in the Quadrangle at 2800 Routh. Student discounts are available. For more information call 748-5191.



Tues.—  
Fri. & S  
Sunday

DINNEI  
Gran C

Locate  
style re  
Phone I

Granny

12205 C  
mance.  
tion.

Tues.—

Balle  
Dallas

Here's  
Ballet r  
Septem  
SMU ce

Musi  
Dallas

For an  
informa

Reunio

Featur  
serves  
a mont  
attracti

State F

Yul Bry  
on Broi  
in "The  
runs fr  
matlon  
Fair Bo

Tues.—Thurs.  
Fri. & Sat.  
Sunday

8 p.m.  
8:30 p.m.  
2:30 & 7 p.m.

### DINNER THEATERS

#### Gran Crystal Palace Theater Restaurant

Located at 2424 Swiss Avenue. Features cabaret-style revue: combination of song, dance, and satire. Phone 824-1263 for more information.

#### Granny's Dinner Playhouse

12205 Colt Rd. Dinner served 1 hour before performance. Call 239-0153 for group prices and information.

Tues.—Sun. Doors open  
Buffet  
Show

8 p.m.  
7-8 p.m.  
8:15 p.m.

### Ballet

#### Dallas Civic Ballet

Here's a unique opportunity to see the Dallas Civic Ballet right here at SMU! They open their season on September 30, 1982, in McFarlin Auditorium on the SMU campus. For information call 744-4396.

### Music

#### Dallas Civic Opera

For an enjoyable season of opera, call 528-9850 for information and ticket prices and availability.

#### Reunion Arena

Features concerts and top name entertainers, and serves a delicious buffet dinner! Call the box office a month in advance for information about coming attractions at 658-7070.

#### State Fair Musical

Yul Brynner is returning to the role he made famous on Broadway and on film, that of the King of Siam, in "The King and I", this year's State Fair Musical. It runs from October 5-24, and you can get more information, including ticket prices, by calling the State Fair Box Office at 691-7200.

### Symphony

The Dallas Symphony Orchestra's 1982-83 Soundseason offers the most exciting package of stars and music ever, under the direction of Eduardo Mata. Guest artists for this season include:

Shlomo Mintz  
Carlo Maria Giulini  
Isaac Stern  
Yehudi Menuhin  
Alicia de Larrocha

Some performances are held at the Fair Park Music Hall, and others will be held right here at SMU in McFarlin Auditorium. Discount prices on tickets for students will be available. Call The Dallas Symphony Box Office for personal assistance at 682-0203.

### Art Museums

#### Dallas Museum of Fine Arts

Here you can find a permanent collection of art including Pre-Colombian, old masters, modern American, and Oceanic. The museum is located at Fair Park, and the admission is free. For information, call 421-4187.

Tues.—Sat.

Sunday & Holidays  
Closed Mondays

10 a.m.-5 p.m.  
1-5 p.m.

#### Kimball Art Museum

Located at 1101 Will Rogers Rd. West in Ft. Worth, this art museum has a permanent collection from prehistoric art to Picasso. For more information, call (817) 332-8451. Admission is free.

Tues.—Sat.

Sunday  
Closed Mondays

10 a.m.-5 p.m.  
1-5 p.m.

### Other Museums

#### Dallas Museum of Natural History

Situated in Fair Park, this museum contains a large collection of mounted animals in their natural habitats. Admission is 50 cents for adults, and 25

cents for children ages 6-11. Their number is 421-2189.

Mon.—Sat.

Sunday & Holidays

10 a.m.-5 p.m.  
noon-5 p.m.

#### Southwestern Historical Wax Museum

This museum contains 181 life-size wax figures representing Texas and Southwestern history, and is located in Grand Prairie at I-30 and Belt Line. Admission for adults is \$3.95, children ages 4-12 pay \$2.95, and children under age 4 are admitted free with an adult. There is free parking. The number to call for more information is 263-2391.

Mon.—Fri.

Sat.—Sun.

10 a.m.-5 p.m.  
10 a.m.-6 p.m.

#### The Science Place

features a Gossamer penguin, and anatomy and disease exhibit. There is a \$1 admission charge, and it is located in Fair Park. Their number is 426-8351.

Tues.—Fri.

Saturday

Sunday

Closed Mondays

1-4:30 p.m.  
9 a.m.-4:30 p.m.  
1-4:30 p.m.





# consumer guide

Need a frock for Friday night? Gotcha covered! Here's a guide that'll help you find shops and services you might need. You'll find everything from Auto Services to Theatres, and there's even a listing of Calculator Services in case your calculator conks out!

## AIRLINES

Aero Mexico	1-800-392-3970
American Airlines	267-1151
Chaparral (Love Field)	1-800-582-4304
Continental	1-800-392-3390
Delta	630-3200
Eastern	453-0231
Frontier	453-0123
Muse (Love Field)	352-2828
Ozark	647-8013
Pan American	821-3030
Piedmont	647-8823
Southwest (Love Field)	640-1221
Texas International	266-2300
Trans World	741-6741

## AUTO SERVICES

Aamco Transmissions 1912 W. Mockingbird	637-4240
Dallas Auto Club (AAA) 4425 N. Central	526-7911
Doc Wideman Garage 6601 Hillcrest	363-1551
Dunlap-Swain Texaco 6437 Hillcrest at University	521-5760
Fred's Foreign Car Service 5111 W. Lovers Lane	350-6786
Glass Cars (Foreign Cars) 2621 Oak Lawn	522-5886
Kuehl Texaco Mockingbird at Airline	526-0271
Midas Mufflers 5715 W. Lovers Lane	357-9234

Mustang Service Center—Gulf 6511 Hillcrest	526-0431
Park Cities Motors 8215-A Preston Road	366-7396
Precision Tune 3229 W. Mockingbird	352-8067
Roy Hance Automotive & Body Shop 4829 McKinney	526-0316

## BANKS

Bank of Dallas 3635 Lammon	521-4171
Capital Bank 5307 E. Mockingbird	824-7650
Greenville Ave. Bank & Trust 7515 Greenville	369-8400
Interfirst Bank Preston at Mockingbird	526-8671
Northpark National Bank 1300 Northpark Center	363-9191
Preston State Bank 8111 Preston Road	363-1511
Texas Commerce Bank 6517 Hillcrest	363-2511

## BEAUTY SALONS

Classic Cut 1310 Elm Street	741-2821
Command Performance NW Lovers Ln. & Greenville	368-1782
Shear Precision Greenville at Lovers Lane	750-8411
Brentano's 451 Northpark Center	369-8904

## BOOKSTORES

Century Bookstore 3032 Mockingbird	691-8157
Doubleday Bookshop 218 Northpark Center	363-5459
Half Price Books 4526 McKinney	526-8440
Logos Bookstore 6620 Snider Plaza	369-3245
Perkins Bookstore In the basement of Perkins Dorm	692-3226
SMU Bookstore Student Center	692-2435
Taylor's 4001 Northwest Pkwy.	363-1500
Varsity Bookstore 6413 Hillcrest	528-9266
Dallas Transit System	826-2222
Greyline of Dallas Tours 101 N. Peak	827-3400
Greyhound Bus Lines 205 S. Lamar 2115 W. Lovers Lane	741-1481 634-1980
Surtran DFW 1520 W. Airport Frwy.	574-2142
Transportation Enterprises 1645 Phoma	263-0294
Schedule Times	262-4477
Charter Times	263-0294
Business Machines of Texas 4540 N. Central Expwy.	823-2222

## BUS LINES

## CALCULATOR SERVICE

Colleg  
8929 E  
Fulto  
1920 F  
Moder  
3210 C  
Texas  
422 N  
Prestc  
6815 F  
Villagr  
5206 C  
Allen I  
Prestc  
Cherry  
Comet  
5315 C  
Daniel  
6301 F  
Esquir  
6613 H  
Fishbu  
5521 G  
3118 K  
Park C  
5710 A  
Snider  
6728 S  
Eckerd  
3012 M  
Skaggs  
6484 M  
Skillern  
Highiar

College Typewriter Center  
6929 Snider Plaza

361-7735

Fulton Business Machines  
1920 McKinney

748-0301

Modern Business Machines  
3210 Oak Lawn

526-3236

Texas Instruments  
422 Northpark Center

369-0444

**CAR WASH**

Preston Car Wash  
6815 Preston

526-0540

Village Car Wash  
5206 Greenville

691-7695

**CLEANERS**

Allen F. Tiller's 1 Hour Martinizing  
Preston Road  
Cherry Lane

368-7224

361-0557

Comet 1 Hour Cleaners  
5315 Greenville Ave.

369-6030

Daniel Cleaning & Laundry  
6301 Hillcrest

521-9927

Esquire Cleaners  
6613 Hillcrest

363-2261

Fishburn Cleaning & Laundry  
5521 Greenville  
3118 Knox

361-6510

528-5714

Park Cities Wash 'n' Dry Clean  
5710 Airline

368-8882

Snider Plaza Cleaners  
6728 Snider Plaza

691-8330

**DRUGSTORES**

Eckerd's  
3012 Mockingbird

363-5525

Skaggs Alpha Beta  
6464 Mockingbird

827-4870

Skillem's/Revco  
Highland Park Village

521-3126

**FLORISTS**

SuzAnn Flowers  
4423 Lovers Lane

522-3444

The Blossom Shoppe  
2101 Abrams Road

521-5138

**FOOD MARTS**

Parkit Market  
4724 Greenville

363-4907

Ralph's Fine Foods  
6901 Snider Plaza

368-0931

Safeway  
Highland Park Village  
7000 Snider Plaza  
3104 Knox

521-5025

363-5910

528-6910

**HOSPITALS**

Baylor University Medical Center  
3500 Gaston

820-0111

Parkland Memorial Hospital  
5201 Harry Hines

637-8000

Presbyterian Hospital  
8200 Walnut Hill Lane

369-4111

St. Paul Hospital  
5909 Harry Hines

689-2000

**HOTELS/MOTELS**

Hilton Inn  
5600 N. Central Expwy.

827-4100

Holiday Inn  
4070 N. Central Expwy.

827-0880

Northpark Inn  
9300 N. Central Expwy.

363-2431

Park Cities Inn  
6101 Hillcrest

521-0336

Twin Sixties Inn  
6060 N. Central Expwy.

691-3600

**JEWELERS**

Adelstein Jewelers  
Northpark Center

369-8266

American Time Centers  
Preston Center

369-2810

Corrigan's Jewelers  
610 Northpark Center

369-3221

Everts Jewelers  
622 Northpark Center

363-4531

James Avery Craftsman  
618 Northpark Center

750-7324

Linz Jewelers  
325 Northpark Center

363-5577

McNutt Jewelry Company  
3410 Oak Lawn

521-2648

McQuirk  
10300 N. Central, Bldg. II, Suite 22

369-4063

Sterling's Jewelry  
5801 E. NW Highway

363-4551

Walnut Hill Jewelers  
148 Walnut Hill Village

352-0843

Zales Jewelers  
710 Northpark Center

363-7841

**LIQUOR STORES**

A & A Liquor  
7729 Garland

321-3171

Airway Liquors  
3122 West Mockingbird

351-5400

Beer Barn Drive-Thru  
6886 Twin Hills

692-5610

Buckeye Cut Rate Liquor  
7610 Greenville

361-2963

Centennial Liquor Store  
2937 Greenville

824-2020

Goody Goody Liquor  
2937 Greenville

826-7840

Hasty Liquors  
6500 N. Central Expwy.

361-7806

Joe's Liquors  
4614 W. University Blvd.

352-4312

Red Coleman's Liquors  
7560 Greenville

363-5485

State Liquor  
3017 Mockingbird

526-2100

**OFFICE SUPPLY STORES**

Crossroads Office Products  
5111 Greenville

361-8292

Hillcrest Office Products  
3026 Mockingbird

363-4479

Massive Office Supply  
101 N. Greenville

235-2341

Preston Center  
Preston Center Plaza

691-6822

SMU Bookstore  
Student Center

692-2435

Turtle Creek Office Supply  
121 Turtle Creek Village

522-7190

Xerox Store  
9100 N. Central (Caruth Plaza)

739-5861

**OPTICAL GOODS**

Lammon Park Optical  
2810 Lammon Ave.

521-7851

Oak Lawn Optical  
1 Turtle Creek Village

521-4708

Optical Clinic  
2727 North Central Expwy.

521-5775

Park Cities Optical  
6103 Sherry Lane

369-0636

Pearle Vision Center  
4115 Skillman

263-2125

San Francisco Optical  
5521 Greenville

361-6130

Texas State Optical  
636 Northpark Center

363-7864

Walnut Hill Optical  
8210 Walnut Hill Lane

369-7388

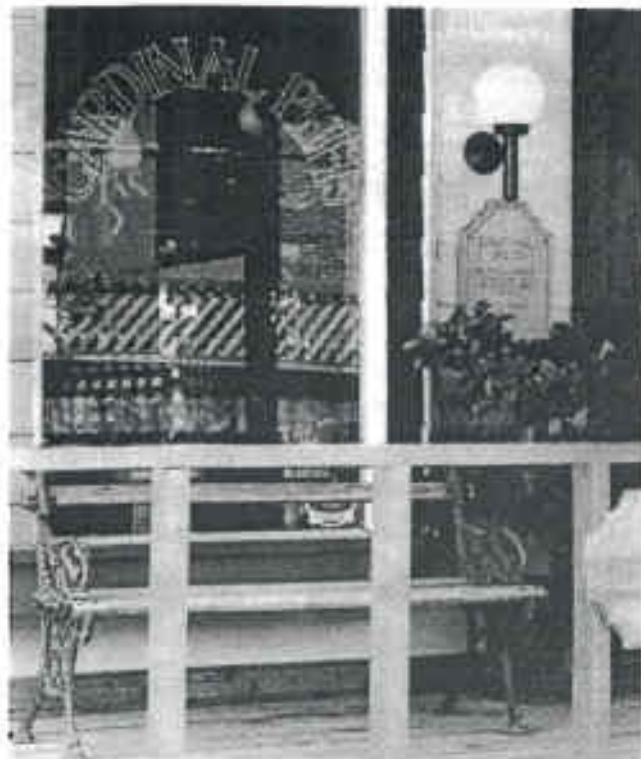
**PHOTO FINISHING**

Fast Hour Foto  
6501 Hillcrest

521-9590

Fotomat Corporation  
6403 Hillcrest  
3745 Walnut Hill Lane  
1411 Belt Line Road

522-7511  
352-9633  
239-7612



# La Mariposa

Authentic Latin American Folk Art

**SEE OUR SELECTION  
OF MEXICAN DRESSES**

Hand Embroidered Dresses, Blouses, Tops  
Paper Flowers, Pinatas,  
Hand Blown Glasses  
Gifts, Decorative Accessories

2800 Routh  
#116,  
The Quadrangle  
742-7815



Fox  
1055  
6221  
1282

Cool  
12 H

Asia  
5401

Barb  
501 C

Culw  
6319

Haro  
High

Papp  
33 HI

WV

WV

WV

WV

WV

WV

WV

WV

WV

WV

WV

WV

WV

WV

WV

WV

WV

WV

WV

WV

WV

WV

WV

WV

WV

WV

WV

WV

WV

WV

WV

WV

Fox Photo  
1055 W. Mockingbird  
6221 Hillcrest  
12821 Preston Road

631-6760  
526-3440  
239-7612

Polo Shop  
58 Highland Park Village

522-5270

Sakowitz Village  
5100 Belt Line Road

934-8300

Cooter's Village Camera Shop  
12 Highland Park Village

521-4553

Highland Park Village  
Mockingbird at Preston

559-2740

**THEATRES**

Arcadia Theatre  
2005 Greenville Avenue

824-8017

**PREPPY APPAREL**

Asland's  
5401 Hillcrest

559-2971

Northpark Mall  
Boedaker and NW Hwy.

363-7441

Dallas Repertory Theatre  
1030 Northpark Center

369-8966

Barbara Robertson  
501 Old Town Village

691-8215

Old Town  
Greenville at Lovers Ln.

750-1517

Eastgate Cinema  
1430 Northwest Hwy.

681-2293

Culwell and Sons  
6319 Hillcrest

522-7000

Prestonwood Town Center  
5301 Belt Line Road

980-4275

Granada Theatre  
3524 Greenville

823-9610

Harold's  
Highland Park Village

521-4770

Preston Forest  
Preston Rd. at Forest Ln.

361-6635

Inwood Theatre  
5458 W. Lovers Lane

352-6040

Pappagallo Shop  
33 Highland Park Village

528-7330

Quadrangle  
2800 Routh

742-8679

Loews Theatres  
12802 Park Central Drive

387-4137



**MUSTANG TRAVEL INTERNATIONAL**

**Specializing in**  
AIRLINE RESERVATIONS & TICKETING  
HOTEL RESERVATIONS  
CAR RENTALS  
CRUISES  
VACATION PLANNING

**Let Mustang Travel Take Care Of  
All Your Travel Needs**

3417 ROSEDALE (IN SNIDER PLAZA)  
(214) 373-6560 DALLAS, TEXAS 75205



smu student codes

### TRAVEL AGENCIES & BUREAUS

Medallion Theatres  
125 Medallion Center

363-7588

All Aboard Travel  
8235 Douglas

692-5477

Mustang Travel International  
3408 McFarlin

521-5570

Northpark Cinema III & IV  
8080 Park Lane

369-8841

American Express Travel  
765 Northpark Center

363-0214

Neiman-Marcus Travel Service  
400 Northpark Center

363-8311

Park Forest Theatre  
353 Park Forest Center

352-8525

American International Travel  
37 Highland Park Village

528-0373

Park Central Travel Agency  
12700 Park Central

661-1919

Plitt Cinema I & II  
9100 N. Central Expwy.

363-5830

Boyer's Travel Agency  
9735 N. Central Expwy.

692-8973

Preston Travel Agency  
8111 Preston Road

363-2587

UA Cine I & II  
5540 Yale  
1100 Northpark Center

369-5308  
363-7541

Fowler Tours and Travel  
13101 Preston Road

387-3081

Total International Travel  
4849 Greenville

361-4566

Village Theatre  
32 Highland Park Village

521-5833

Lake International Travel  
6606 Snider Plaza

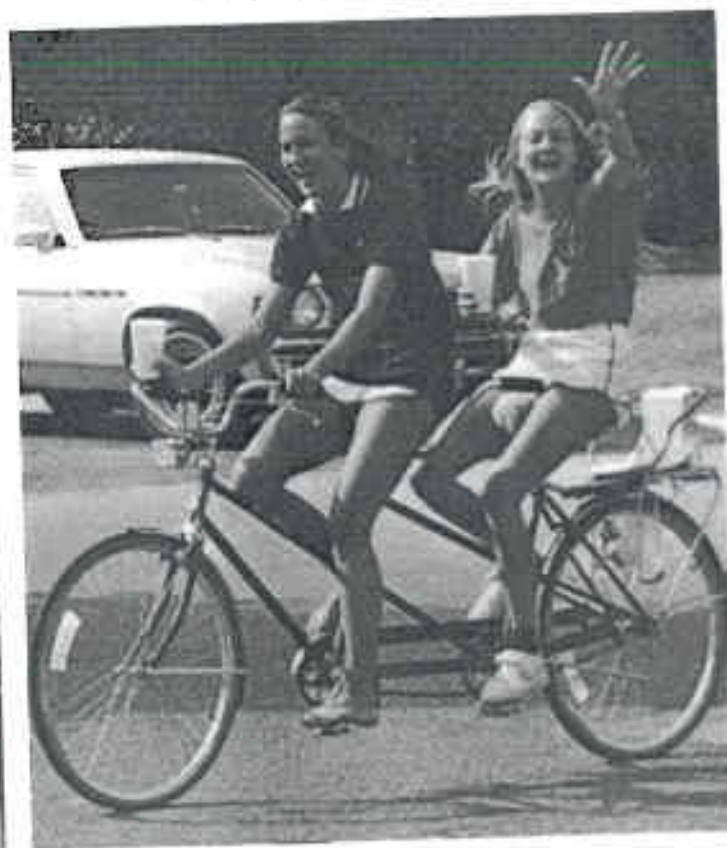
369-8503

Trade Wind Tours  
8131 LBJ Freeway


690-3108

The Travel Place  
13771 N. Central Expwy

690-4092



# Is your bank holding you up?



Taking a full course load is practically a full time job. So what you need is a bank that fits your busy schedule. And a special account that meets your special needs. Hassle free. As of August 1, you've got it at Capital Bank. The Mustang Account for SMU students. For an annual service charge of only \$39.95, you get a variety of special services that can save you time and money.

You get two Mustang check orders free. Immediate credit on all out-of-state checks from family members. No monthly service charge, which means you'll save around \$72 a year. And all inquiries about your balance through the MPACT machine are also free of charge.

Capital Bank takes convenience to the max with an MPACT automatic teller located in the SMU Student Center. Your Mustang Account provides you with a free MPACT card that enables you to make MPACT transactions at Capital Bank, Capital Bank West or at your SMU MPACT machine for only fifty cents — two bits less than at other MPACT locations. So even when you're burning the midnight oil and remember you need some cash, it's available. Around the clock.

We're located at Central and Mockingbird. And in the SMU Student Center with MPACT. So if your bank is holding you up by taking too much of your time and money, open a Mustang Account at Capital Bank. Without fail.

**MPACT is  
now at SMU!**

**Capital Bank**

We're independent because you are.

Member FDIC

# restaurant & entertainment guide

You're bound to find some appealing information here. Just looking through these next few pages is enough to make you respond like Pavlov's dog! Next time you're stuck for an idea of where to go to eat or have fun, remember this handy little guide. And when you get there, tell 'em we sent you.

## Charge Codes:

AMC—all major credit cards  
MC—MasterCard  
V—Visa  
DC—Diner's Club  
CB—Carte Blanche

## Dress Codes:

(CT)—Coat and Tie  
(C)—Casual

## Price Codes:

\$—inexpensive (under \$5)  
\$\$—moderate (\$5-\$12)  
\$\$\$—expensive (\$12+)

## Reservations:

(RA)—Reservations Accepted

## BARBECUE

DICKEY BARBECUE, 4610 N. Central Expressway, 823-0240. Mon.-Sat. 11am-8pm. \$\$\$ (C).

FRED'S BARBECUE, 5915 Greenville Ave., 363-8178. Sun.-Thurs. 11am-midnight; Fri.-Sat. 11am-1am. \$ (C).

RIB RESTAURANT, 5741 Lovers Ln., 357-8139. Daily 5-10pm. MC, V, AE. \$\$ (C).

TONY ROMA'S PLACE FOR RIBS, 5550 Yale Blvd., 750-9343. Daily 11-2am. MC, AE. \$\$ (C).

## BURGERS

BIFF'S RESTAURANT, 7402 Greenville Ave., 696-1952. Daily 11-2am. MC, V, AE. \$\$\$ (C).

BURGER KING, 5456 E. Mockingbird Ln., 823-3582. Sun.-Thurs. 10am-midnight; Fri.-Sat. 10am-3am. \$ (C).

CACTUS BAR & GRILLE, 5412 E. Mockingbird, 821-0621. Mon.-Sat. 11am-midnight; Sun. 4pm-midnight. \$ (C) HH daily.

CACTUS JACK'S, 6839 W. Northwest Hwy., 696-2323. Sun.-Fri. 10am-midnight; Sat. 10am-1am. \$ (C).

CHILI'S, 7567 Greenville, 361-4371. Mon.-Thur. 11am-11pm; Fri.-Sat. 11am-1am; Sun. 11:30am-11pm. MC, V, AE.

THE FILLING STATION, 6862 Greenville, 691-4488. Mon.-Sat. 11am-2am; Sun. 12-2am. MC, V, AE. \$ (C) HH.

JACK-IN-THE-BOX, 11722 N. Central Expwy., 348-3228. Open 24 hrs. \$ (C).

JUDGE BEAN'S RESTAURANT, 8214 Park Ln. @ Greenville, 363-8322. Tues.-Sat. 11-2am; Sun.-Mon. 11-11pm. MC, V. Club with live band T—Sat. 9pm-2am. \$ (C) HH daily.

MCDONALD'S, 5934 Abrams, 361-0070. Sun-Th. 7am-11pm; Fri.-Sat. 7-12am. \$ (C).

SNUFFER'S, 3526 Greenville, 826-16850. Daily 11:30am-2am. MC, V, AE. \$ (C).

T.G.I. FRIDAY'S, 5500 Greenville, 363-5353. M-Sat. 11:30am-2am; Sun. 11-2am. MC, V, AE, DC. \$\$\$ (C).

WENDY'S, 6614 E. Northwest Hwy., 692-0401. Sun.-Th. 10:30-10pm; F-Sat. 10:30-11pm. \$ (C).



T  
C  
F  
6  
U  
P  
N  
A  
P  
M  
A  
V  
M  
A  
G  
J  
T  
K  
I  
8  
p  
o  
v

**CAFETERIA**

HIGHLAND PARK CAFETERIA, 4611 Cole Ave., 526-3801. M-Sat. 11-8pm. Buffett open M-Sat. 11-2 pm & 5-8pm. V, MC for purchases over \$10. \$-\$\$ (C).

**FRENCH/CONTINENTAL**

CALLUAUD'S RESTAURANT, 2619 McKinney Ave., 823-5380. M-Sat. 11:30-2:30pm & 6-10:30pm. RA, V, MC, AE. \$\$\$ (CT).

LE LOUVRE, 9840 N. Central Expwy., 691-1177. Sun-F. 11:30-2pm & 6-10:30pm; F-Sat dinner 6-11pm. RA. Live entertainment. AMC. \$\$\$ (CT).

LES SAISONS, 165 Turtle Creek Village, 526-1102. Sun-Th. 11:30-11pm; F-Sat 11:30-midnight. RA, AMC. \$\$-\$\$\$ (CT).

MANSION, 2821 Turtle Creek, 559-2100. M-Sat 12-2pm & 6-10:30pm; F-Sat 6-11pm; Sun 11-2 pm. RA, AMC. \$\$\$ (CT).

THE OLD WARSAW, 2610 Maple, 526-0032. Sun-F 6-11pm; Sat 6pm-midnight. RA. Live band. AMC \$\$\$ (CT).

PAPILLON RESTAURANT, 7940 N. Central Expwy., 691-7455. M-Sat 11:30-2pm & 6-10pm. RA. Live entertainment. AMC \$\$\$ (CT).

PATRY'S RESTAURANT FRANCAIS, 2504 McKinney Ave., 748-3754. M-F 6-10:30pm; Sat 6-11pm. RA, AMC \$\$\$ (CT).

PYRAMID, Fairmont Hotel, Ross at Akard, 748-5454. M-F 11:30-2pm & 6-11pm; Sat & Sun 6-11pm. RA, AMC \$\$\$ (CT).

VENETIAN ROOM, Fairmont Hotel, 748-5454. Dinner M-Sat 7pm-11pm; Sun brunch 11-2:30pm. RA, AMC \$\$\$ (CT).

**GERMAN**

JAGERSTRUBE, 7811 Inwood Road, 352-5812. T-Sun. 5-10 pm; closed Mon. RA, AMC \$\$ (C).

KUBY'S, 6001 Snider Plaza, 363-2231. M-Sat. 8am-6pm, sandwiches until 5:30. MC, V for purchases over \$15. \$ (C).

**GREEK**

GOLDFINGER, 2905 Webb Chapel Ext., 350-6963. M,W,Th,Sat&Sun 11-1am; T&F 6pm-2am. RA, Authentic Greek entertainment. AMC \$\$ (C).

KOSTA'S, 2755 Bachman Dr., 351-4592. Daily lunch 11-5:30; dinner opens @ 5:30pm. \$-\$\$ (C).

**INDIAN**

INDIA HOUSE, 5422 E. Mockingbird, 823-1000. Daily lunch 11:30-2:30; dinner: Sun-Th 5-10pm, F&Sat till 11. RA, AMC \$\$ (C).

SAHIB, 9100 Caruth Plaza, 987-2301. Daily 11:30-2:30 and 5:30-11pm. MC, V, AE. \$\$ (C).

**ITALIAN/PIZZA**

BIRRA PORRETI'S, 9100 N. Central Exp., 692-0565. Sun-Th 12-12; F&Sat till 1. RA for 6 or more. AMC \$-\$\$ (C).

CAMPISI'S, 5620 E. Mockingbird, 827-0355. Sun-F 12-12; Sat. til 1. RA for 6 or more. Personal checks accepted. \$\$ (C).

CARUSO'S, 706 Medalion Center, 691-9944. Sun-Th 5:30-10pm; F&Sat till 11. Singing waiters. AMC \$\$ (C)

CUNZE'S, 6101 Greenville, 369-5747. Daily 5-11pm, MC, V, AE, DC. \$\$ (C).

GODFATHER ITALIAN RESTAURANT, 6550 Abrams, 341-8724. T-Sat 5-11pm; Sun 5-10pm. Closed M. AMC \$\$ (C).

GORDO'S, 4528 Cole, 521-3813. M-Th 11-10pm; F&Sat till 11:30; Sun 12-10pm. MC, V, AE. \$-\$\$ (C).

IL SORRENTO, 8618 Turtle Creek Blvd., 352-8759. Sun-F 5:30-11pm; Sat till 12. No RA on F&Sat. AMC \$\$\$ (C).

LA TOSCA, 7713 Inwood, 352-8373. Sun, T-Th 5:30-10:30, F&Sat till 11. Closed M. AMC. \$\$\$ (C).

LOMDARDI'S, 2815 McKinney, 823-6040. M-Th 11-2 & 6-10:30; F 11-2 & 5:30-11. Closed Sun. RA. MC, V, AE, DC. \$\$ (C).

MARIO'S, 135 Turtle Creek Village, 521-1135. Daily 6-10:30; Sat till 12. RA. AMC. \$\$-\$\$\$ (C).

MR. GATTI'S, 5941 Greenville, 691-8238. Daily 11-11; F&Sat till 1. RA. \$\$ (C).

PIETRO'S, 5722 Richmond, 824-9403. T-Th 5:30-10pm; F&Sat till 11. Closed Sun&Mon. MC, V, \$\$ (C).

SERGIO'S, Suite 165, The Quadrangle, 742-3872. Lunch M-Sat. 11:30-2; dinner: M-Th 6-10; F&Sat till 10:30. Closed Sun. RA. AMC. \$\$ (C).

TOSCA, 7713 Inwood @ Lovers, 352-8373. T-F lunch 11:30-2; T-Sun dinner opens @ 6. MC, V, AE, DC. \$-\$\$ (C).

**MEXICAN**

ANNIE'S SANTA FE, 6881 Greenville, 369-8600. 11:30-10:30, 7 days. RA. AMC. \$-\$\$ (C).

CAFE BRISAS, 165 Inwood Village, 352-3307. M-Th 11-10pm; F&Sat till 11; Sun 10:30-9pm. RA, MC, V, AE, DC. \$-\$\$ (C).

CAFE CUNCUN, 4131 Lomo Alto, 559-4011. M-Th 11-10; F till 11; Sat 5-11; Sun 5-10. AMC. \$\$ (C).

DOS GRINGOS, 3575 W. Northwest Hwy., 350-5545. Sun-Th 10:30-10pm; F&Sat till 11. No RA on F&Sat. MC, V, AE. \$-\$\$ (C).

EL CHICO, 3353 W. Northwest Hwy., 357-8264. 11-7, 7 days. RA for 10 or more. AMC. \$-\$\$ (C).

EL FENIX, 907 Northpark Center, 363-8261. M-Sat 11-9pm. \$-\$\$ (C).

EL TORITO, 8872 N. Central Expwy. & Park Lane., 696-2434. 11-11, 7 days. RA. MC, V, AE. \$\$ (C).

HERRERA, 3902 Maple, 526-9427. M,W,Th 9-8; F-Sun till 10. Closed T. AMC. \$ (C).

JAVIER'S, 4212 Cole, 521-4211. S-Th 5:30-10; F&Sat till 11. RA. MC, V, AE. \$\$ (C).

MARIANO'S, 5500 Greenville (Old Town in the Village) 691-3888. M-Th 11-2:30 & 5-10; F&Sat 12-11; Sun 12-10. RA for 8 or more. MC, V, AE. \$\$ (C).



**NINFA'S**, 5960 Greenville @ Southwestern, 369-8973. Lunch 11:30-2; dinner: M-Th 5:30-10, F&Sat till 11; Sun 12-10. RA for 8 or more. AMC. \$-\$\$ (C).

**OJEDA'S**, 4617 Maple, 528-8383. M-Th 11-2 & 5-9pm; F&Sat 11-10. Closed Sun. AMC. \$ (C).

**RAPHAEL'S**, 3701 McKinney, 521-9640. M-F 11:30-10:30pm; Sat 12-10pm. Closed Sun. RA on M-Th. AMC. \$\$ (C).

**TUPINAMBA RESTAURANT**, 3071 W. Northwest Hwy., 352-8570. M-Th 11-10pm; F&Sat till 11; Sun 12-9pm. RA for 9 or more except on weekends. AMC. \$-\$\$ (C).

#### ORIENTAL

**ASUKA**, 7138 Greenville btwn Park & Walnut Hill, 363-3537. Lunch 11-2; dinner 6-10:30. Closed M. RA. MC, AE. \$\$\$ (C).

**BENIHANA OF TOKYO**, 12700 Park Central, 387-4404. Sun-Th 11:30-2 & 5-10; F&Sat 11:30-2 & 5-11. RA. AMC. \$\$\$ (C, no jeans).

**CANTON RESTAURANT**, 5519 Lovers Lane, 357-4486. T-Sun 11:30-10pm. Closed M. RA. AMC. \$-\$\$ (C).

**CHINA CLIPPER CAFE**, 3930 McKinney, 256-9165. T-F 11:30-10pm; Sat&Sun 5-10pm. \$ (C).

**GENGHIS KHAN MONGOLOID BARBECUE**, 4830 Greenville, 361-0280. M-F 11:30-2 & 5:30-11; Sat 5-11pm; Sun 5-10pm. RA. AMC. \$\$ (C).

**HUNAN**, 5214 Greenville @ Lovers, 369-4578. M-Th 11:30-10:45. MC, V, AE. \$\$ (C).

**KOBE STEAKS**, 15000 Quorum Dr. @ Beltline off Dallas Pkwy., Suite 600, 934-8150. Sun-Th 5-11; F&Sat till 12. AMC. \$\$\$ (C).

**KON TIKI PORTS**, Caruth Plaza and Park Lane, 987-2333. Daily 11:30-11pm. MC, V, AE, DC. \$-\$\$ (C).

**MILHAMA YA**, 7713 Inwood, 351-9491. T-Th 11:30-2:30 & 5:30-10pm; F&Sat till 11; Sun 1-10. RA. MC, V, AE, DC. \$\$ (C).

**ROYAL TOKYO RESTAURANT**, 7525 Greenville, 368-3304. M-Th 11:30-2 & 5:30-11; F 11:30-2 & 5:30-11:30; Sat 5:30-11:30; Sun brunch 11:30-2:30 and dinner 5:30-10:30. RA. Piano bar. AMC. \$\$ (C).

**TAIWAN**, 6111 Greenville, 369-8902. M-Sat 11:30-3am; Sun 10-11pm. RA. MC, V, AE. \$\$\$ (C).

**YUNNAN DYNASTY**, 9100 N. Central, Suite 191, 739-1110. Sun-Th 11:30-11pm; F&Sat till 12. MC, V, AE. \$\$ (C).

#### POLYNESIAN

**DON THE BEACHCOMBER**, 8380 Meadow Rd. at Greenville, 691-7430. Dinner M-Th 5-10:30; F&Sat 5-11; Sun 5-10pm. Polynesian Buffet M-W, 5-7. MC, V, AE, DC. \$\$ (C).

**TRADER VIC'S**, Hilton Inn, 5300 E. Mockingbird Ln., 827-3620.

#### SANDWICHES/SALADS

**THE ATRIUM**, 1404 Main St., 651-8414. Lunch M-F 11-2:30. \$ (C).

**BRONX**, 3835 Cedar Springs near Oaklawn, 521-5821. M-Th 11:30-12:30am. F til 1:30 am; Sat 12 noon-1:30am

**COCO'S**, 6232 E. Mockingbird Ln., 823-3887. M-Th 6:00am-11pm; F 6am-1pm; Sat 7am-1pm; Sun 7am-11pm.

**DAIRY QUEEN**, 6417 Hillcrest, 526-9488. Daily 9am-10pm; breakfast 9am-10am.

**GREAT OUTDOORS SUBSHOP**, 6106 Skillman, 691-5407. M-Th 7am-12pm; F&Sat 7am-2:30pm; Sun till 11:00. \$ (C).

**NATURAL EATS**, 7035 Greenville, 987-0559. M-Th 11-9pm; F-Sun 11:30-9pm. Accept checks. \$ (C).

6932  
Greenville



368-6367

Serving Beer and Mixed  
Drinks in The Friendly Spirit  
of a Neighborhood Bar

Open 7 days a week—12-2 a.m.  
**Happy Hour: 4 to 8**  
Live Entertainment  
Thurs—Fri—Sat

NEW TOP  
Hillcrest), f

THE SALC  
823-6550. 3

ZAK'S SUF  
daily. \$ (C).

#### SEAFOOD

BANNO  
821-1321. f  
ed Sun. M

CRAWDAI  
11-10pm; F  
MC, V, AE

CRAZY C  
11-10; F&S

NEW YORK SUB, 3411 Asbury Ave. (next to Hillcrest), 522-1070. 11-midnight, 7 days/week. \$ (C).

THE SALOON, 2818 Greenville (lower Greenville), 823-6550. 3-2am daily. AE, MC, V, \$ (C).

ZAK'S SUBS, 5521 Greenville, 691-5213. 10-10pm daily. \$ (C).

#### SEAFOOD

BANNO BROS. SEAFOOD, 1516 Greenville, 821-1321. M-Th 11-10pm; Fri 11-11; Sat 5-11pm; closed Sun. MC, V, AE. \$\$ (C).

CRAWDADDY'S, 2614 McKinney, 748-2008. M-Th 11-10pm; Fri 11-12midnight; Sat 12-12; Sun 12-10pm. MC, V, AE. \$-\$\$ (C).

CRAZY CRAB, 3211 Oaklawn, 522-5310. Sun-Th 11-10; F&Sat 11-11. RA. MC, V, AE, DC. \$-\$\$ (C).

MILLER'S T, 8021 Walnut Hill, 696-2100. M-Sat 11-11; Sun 11-10. RA. AMC. \$\$ (C).

OYSTER HOUSE, 108 N. Akard, 747-2119. M-F 10-2am; Sat 10-6pm; closed Sun. V, AE. \$\$ (C).

POMPANO, 6950 Greenville, 750-6728. 11:30-2 lunch; Sun 5-10, M-Th 5:30-11pm; F&Sat 6-11:30pm. MC, V, AE, DC. \$\$ (C).

RATCLIFFE'S, McKinney at St. Paul, 748-7480. M-F 11:30 lunch.

S & D OYSTER CO., 2701 McKinney, 823-6350. M-Th 11-10pm; F&Sat 11-11pm; closed Sun. MC, V. \$-\$\$ (C).

SOUTHERN KITCHEN, 6615 E. Northwest Hwy., 368-1658. M-Sat 5:30-10pm; Sun 5-9:30pm. RA for 5 or more. AMC. \$\$\$ (C).

VINCENT'S, 2742 Bachman, 352-2691. Sun-Fri 11-11pm; Sat 5-11pm. MC, V, AE, DC. \$\$ (C).



#### STEAKS

BABY DOE'S MATCHLESS MINE, 3305 Harry Hines, 741-9771. M-Th 11-2:30 pM and 5-11pm; F 11-2:30 and 5-midnite; Sat. 5-midnite; Sun brunch 11-2:30 and dinner 5-10pm RA. MC, V, AE. \$\$ (C).



4501 Cole Ave. Dallas, Texas 75205 526-0480  
(One blk. south of Knox)

## *Come Join the Congregation* **Good Food & Fun**

Monday—\$1 drinks

Wednesday—Inventory Clearance

Thursday—Tea Party

Sunday—Champagne Brunch

*Every Night Late Night*  
*Happy Hour 10—2 a.m.*

smu student codes

**BOBBY McGEE'S CONGLOMERATION**, 6400 E. Mockingbird Ln., 826-9020. Sun-Th 6-11pm; F& Sat. 5:30-midnight. RA. MC, V, AE, DC. \$\$ (C).

**BONANZA**, 5406 E. Mockingbird Ln., 821-0902. Sun-Th 11-9pm; F&Sat. 11-10pm MC, V. \$-\$\$ (C).

**CATTLEMAN'S STEAKHOUSE**, 2007 Live Oak, 747-9131. Daily 5-10pm RA. AMC. \$\$ (C).

**HOFFBRAU**, 3205 Knox, 559-2680. M-Th 12-11pm; F&Sat till 1; Sun. 5-10pm. MC, V, AE. \$\$ (C).

**MAGIC TIME MACHINE**, 5003 Belt Line Rd. 980-1903. M-Th and Sun 5:30-10pm; F&Sat 5:30-11:30. Check for specific hours. RA. MC, V, AE, DC. \$\$-\$\$\$ (C).

**OLD SAN FRANCISCO STEAKHOUSE**, 10965 Composite Dr., 357-0484. M-Th 5-11pm; F& Sat. 5-midnight; Sun 4-11pm. RA. AMC. \$\$ (C).

**RAILHEAD**, 6918 Twin Hills, 369-8700. Sun-Th 5:30-10:30pm; F& Sat. 5:30-11pm. RA. MC, V, AE. \$\$\$ (C).

**RANDY TAR**, 7043 Greenville Ave., 691-7102. Sun-Th 5-10:30; F& Sat 5-11:30. MC, V, AE, DC. \$\$-\$\$\$ (C).

**SHED STEAKHOUSE**, 9600 Overlake Dr., 358-2226. Daily 5:30-10pm. MC, V, AE, DC. \$\$ (C).

**STEAK & ALE RESTAURANT**, 5419 Glen Lakes Dr., 368-0811. M-Th 5:30-10pm; F&Sat till 12:00. Check for specific times. MC, V, AE. \$\$ (C).

**VICTORIA STATION RESTAURANT**, 2910 Routh, 851-0381. M-Th 5:30-11pm; Fri 11:30-2pm and 5:30-11pm; Sun. 5-10pm. RA. MC, V, AE. \$-\$\$ (C).

#### VARIETY

**ANDREW'S**, 3301 McKinney, 521-6535. Daily 11:15-1:30am. MC, AE, V, DC. \$-\$\$ (C).

**ANTARES**, Reunion Tower, 300 Reunion Blvd., 741-3663. Sun-Th. 6-midnight; F& Sat. 5-midnight. RA. AMC. \$-\$\$ (C).

**ARTHUR'S**, Campbell Centre, 381-8833. Sun-Sat. 11:00-1pm. AMC. \$\$\$ (CT).

**BLACKEYED PEA**, 4814 Greenville, 361-5979. M-Th & Sun 11:00-10pm; F&Sat 11-11pm. MC, V, AE, CB. \$ (C).

**CRACKERS RESTAURANT**, 2621 McKinney, 827-1660. M-Th 11-2:30pm and 5-10pm; F& Sat 11-2:30pm and 5-11pm; Sun. 10-1. RA. MC, V. \$-\$\$ (C).

**GREENVILLE AVE. BAR & GRILL**, 2821 Greenville, 823-6691. 11:30am daily. MC, V. \$ (C).

**GREENVILLE AVE. COUNTRY CLUB**, 3619 Greenville, 826-5650. M-Sat 11-2am; Sun. 12-2am. MC, AE, V. \$ (C).

**HOULIHAN'S OLD PLACE**, 4 Northpark E., 361-9426. M-Th 11-11pm; F& Sat. 11-12pm; Sun. 10:30-11pm. RA. Disco w/DJ. 9-2pm. MC, V, AE, DC. \$\$ (C).

## Entertainment in Big "D"

Looking for a fun way to spend the day? We've got ideas that range from sports to amusement parks. So take a look at all the avenues Big "D" has to offer, and then try one out!

### Sports

#### Baseball

If it's hot dogs, peanuts, and popcorn you're after, take yourself out to the ball game! The **Texas Rangers** play in Arlington Stadium found on I-30 in Arlington. For current ticket prices and info call 273-5222.

#### Basketball

This is the **Dallas Mavericks'** third year in Dallas, and they're going great guns. Games are played in Reunion Arena, and the Mavericks have a 42-game regular season. So go on out and show the Mavericks that SMU supports them! Call 748-1808 for details.

#### Football

Yep, Dallas has it—America's Team, the **Dallas Cowboys!** They play at Texas Stadium in Irving (the same place where SMU plays), and you can watch

outstanding football and cheerleaders. For more information about ticket prices, call 369-8000.

#### Golf

Big "D" offers several public golf courses for you to play including:

**Cedar Crest**—1800 Sutherland  
**Tenison Park**—3501 Samuell Blvd.  
**Mesquite Municipal**—NW Hwy. 67 at Barnes Bridge Rd.

**Elm Park**—11223 Luna Road  
**Stevens Park**—1005 N. Montclair

#### Polo

What a beautiful sport to watch, and Dallas has just the place to watch it! It's called the **Willow Bend Polo & Hunt Club** located on Preston Road at Parker (FM 544). You can buy tickets at the gate, and they're only \$4.00. Games begin at 6:00 p.m. on Sundays. For more information, give them a call at 248-6258.

#### Racing

Has the racing bug bitten you? Well, **Green Valley Raceway** is the place for you. There are stock car races on Wednesday and Saturday nights starting at 5 p.m., and admission is \$10. If you have more questions, give them a call at 498-2858.

#### Rodeo

Texas Chic at its best! No mechanical bull here, thank you. This is the real thing, and the **Mesquite Championship Rodeo** will make a dogie out of you! They're open April-September every Friday and Saturday night from 8:30-10 p.m. Information about ticket prices can be found by calling 285-8777.

#### Tennis

There are more tennis courts around Big "D" than you can shake a racquet at. Give the **Dallas Tennis Association** a call at 386-8660, and they'll help you find a court close to you. Also, **World Championship Tennis (WCT)** is coming to Dallas during the week of April 20-26, 1983. For more info on their games, call 651-8444 or 748-5828. The **Avon Tennis Tours** will be playing in SMU's very own Moody Coliseum this year, and again, for more information, call the Dallas Tennis Association's phone number listed above. They'll be glad to help you.

### Ticket Outlets

For all the sporting teams or events listed above, you can get tickets at Rainbow Ticketmaster, John's Jeans, or Sears Ticketron. Rainbow is the closest one to campus being right across the street on Hillcrest, and they carry tickets for the Rangers, Mavericks, Green Valley Raceway, WCT Tennis and the Avon Tournaments. Their number is 521-3670.

### Area Attractions

#### Dallas Zoo

Big "D" has one of the top 10 zoological parks in the nation. Don't miss a chance to go out and see all the interesting animals they have. They're located at 621 E. Clarendon Drive, and they're open daily from 9-5. For admission prices and more information, call the Zoo at 946-5156.

#### Fair Park

Not only does Fair Park host the annual State Fair of Texas in October, the Cotton Bowl in January, and musical performances in the Music Hall! It's open weekends April-September with interesting museums to see like the Hall of State, restaurants, picnic areas, and midway rides and games. You can find Fair Park on Perry and 2nd Avenue, or call 565-9931 for more info.

#### Reunion Tower Observation Deck

For a panoramic view of the Dallas area, take a trip to the top of Reunion Tower where the Observation Deck was built just for that purpose! It is open daily 9:30 a.m. to 11:30 p.m., and costs \$1.50 for adults. Reunion Tower is located at 300 Reunion Blvd. For more details, call 741-3683.

#### Six Flags Over Texas

This is one of the nation's top amusement parks, and you'll see why when you go. There are restaurants, rides, rides, and more rides, and the grounds are kept very clean by college students who work there. There are also entertainment shows featuring college students, and occasionally a big-name rock star performs there, like Linda Ronstadt. Six Flags is located 20 minutes west of Dallas on I-30. For admission prices and times, call 461-1200.

### Parks

Want to just spend a peaceful, relaxed day or maybe bike or jog? Check out one of the many area parks like these:

#### Bachman Lake

Great activities for groups—frisbee tournaments, rollerskating, and paddleboating! Northwest Highway at Webb's Chapel Road.

#### Fair Oaks Park

Take Skillman to Abrams and turn left. There you are!

#### Glencoe Park

A lot goes on here—parties, parties, and more parties! You can also watch rugby on Saturdays. It's behind the Hilton Inn on Mockingbird.

#### Samuell Park

This one's next to Tenison Golf course. Take Grand Road to Samuell Blvd.

#### Turtle Creek

What a great place to study or have a picnic with someone special! Take Abbot to Beverly Dr. and turn right.

#### White Rock Lake

Great for flying kites, rollerskating, and sailboating. Go east on Mockingbird—you can't miss it!!

Still stuck for something to do? Check out these ideas:

Go-Kart racing is always a blast at Shake, Rattle & Roll at 6606 S. Loop 12. It's open Mon-Fri from 6-10; Sat-Sun from 1-11. Call 398-4826 for prices and information.

Ice skating is a really fun date! Dallas Skateland is located at 7800 Greenville and you can call them at 348-5800 for information. Also the Ice Capades Chalet in Prestonwood Shopping Mall is available. Their number is 980-8988 for prices and other information.

Miniature golf is always fun. Try The Castle on I-35 West. They also have go-karts and bumper boats. For prices and information, call 620-7575.

Want to learn how to do the Cotton-Eyed Joe and Texas Two-Step? The Longhorn Ballroom is the place to go! Take a date, and you can get free lessons! Call 428-3128.

If the Polka, ChaCha, and Waltz are more your speed, try Union Station. They'll be glad to teach you. Call 741-3663.

Be sure to pick up a license from a local sporting goods store so you won't miss out on the Hunting and Fishing season. For more information, call 328-5493.

Take a free tour of Mrs. Baird's Bread and taste free samples of her baked goodies! Call 526-7201.

The Women and Children's Apparel Shows are really fun to see! There are five shows a year, beginning with the first fall show October 28 through November 2 at the Apparel Mart on Stemmons Freeway. Call 655-6200 for information.

The RFD Ranch in Justin, Texas, offers Western Bar-B-Q's, horseback riding, hay rides, spacious picnic and playgrounds. Their number is 430-0192 or 429-2981.

Events to keep your eyes and ears open for:

Ice Capades at Reunion Arena in early September.  
State Fair of Texas at Fair Park in early October.  
Texas-OU Football Game in the Cotton Bowl at Fair Park in mid October.  
Neiman-Marcus Fortnight during October-November.



# church directory

## Our own church services on campus:

### PERKINS CHAPEL—

Protestant	11:00 a.m.
Roman Catholic Mass	9:30 a.m.
<b>CANTERBURY HOUSE—3308 Daniels</b>	
Episcopal	11:00 a.m. & 5:00 p.m.

## Area Worship Services:

### ADVENTIST

Seventh Day Adventist Church 4009 North Central	528-1111
--	----------

### ASSEMBLY OF GOD

Lakewood Assembly of God Church 2702 Abrams	821-5290
--	----------

### BAHA'I WORLD FAITH

Baha'i Community of University Park 4129 Greenwich	526-0804
---	----------

### BAPTIST

First Baptist Church Erway at San Jacinto (Downtown)	742-3111
---	----------

Park Cities Baptist Church 3933 Northwest Parkway	369-8211
--	----------

### CATHOLIC

Christ the King Catholic Church 8017 Preston	363-6219
---	----------

Holy Trinity Catholic Church 3811 Oak Lawn	526-8555
---	----------

### CHRISTIAN

Northway Christian Church 8400 Airline at NW Hwy.	361-6641
--	----------

### CHURCH OF CHRIST

Church of Christ of Highland Park 4333 Cole	521-5811
--	----------

Preston Road Church of Christ 6409 Preston Road	526-5890
--	----------

### EPISCOPAL

Church of the Incarnation 3966 McKinney	521-5101
--	----------

St. Michael's & All Angels 8011 Douglas	363-5471
--	----------

### JEWISH SYNAGOGUES

Shearith Israel 8401 Douglas	361-6608
---------------------------------	----------

Temple Emanu-El Hillcrest & Northwest Hwy.	368-3613
---	----------

### LUTHERAN

Christ Lutheran Church of University Park 3001 Lovers Lane	363-4355
---	----------

### PENTECOSTAL

Deliverance Temple 1715 Forest Lane	428-6577
--	----------

### PRESBYTERIAN

Highland Park Presbyterian 3821 University	526-7457
---	----------

Preston Hollow Presbyterian 9800 Preston Road	368-6348
--	----------

### UNITARIAN

First Unitarian Church 4015 Normandy	528-3900
---	----------

### UNITED METHODIST

Highland Park United Methodist Mockingbird at Bishop	521-3111
---	----------

Preston Hollow United Methodist 6315 Walnut Hill	363-4393
---	----------

## College Ministry of Highland Park United Methodist Church



### Sundays

Worship—8:30, 9:30 & 11:00 a.m.

College Bible Study—9:30 a.m.

University Class—10:45 a.m.

Supper Group—5:30 p.m.

### Wednesdays

College Choir—5:30 p.m.

Dinner & Fellowship—6:15 p.m.

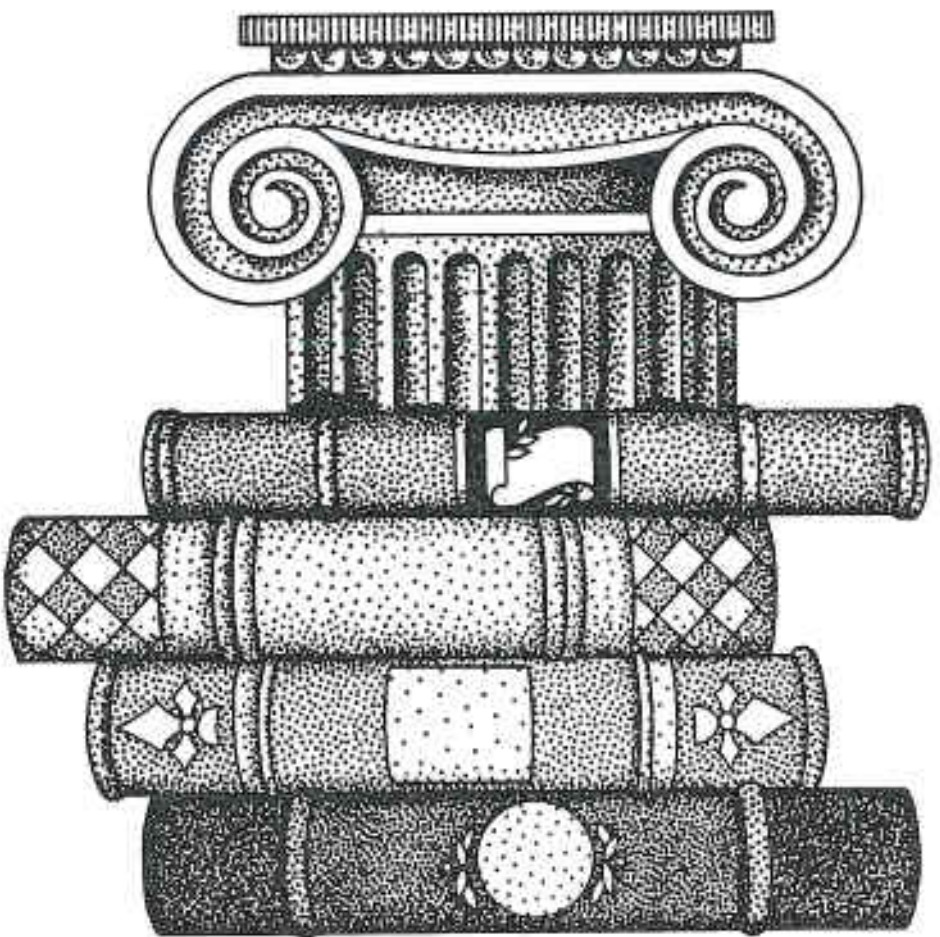
Communion Service—7:00 p.m.

Located at the SW corner of SMU Campus

(Mockingbird Lane and Hillcrest)

Robert Halsey—College Minister

Phone — 521-3111



smu student codes

# STUDENT CODE OF SMU

Southern Methodist University's Student Code exists to provide its Student Body with a definitive explanation of those University Policies that most closely affect student life. The Student Code is written by students for students and is the foundation for the student body's relationship to the rest of the University. All students are expected to be knowledgeable of, and abide by the rules set forth in this Student Code.

## I. Policies Pertaining To All Students

### A. Rights and Responsibilities

The responsibilities and rights of students contained in this Student Code and all other legislation of the Student Senate are established by students for students. The policies are based on the University's concern for the mental and physical health and well-being of the members of the University community, and the University's desire to encourage development of each individual's sense of personal responsibility.

#### 1. Responsibilities of the Student

(a) Student will at all times respect the rights of others, maintain a responsible behavior conducive to the teaching and learning environment, and uphold the dignity of the University.

(b) All local, state and federal laws shall be upheld by the SMU community.

(c) Enrollment into SMU is considered implicit acceptance of the Student Code and all University policies.

1. Students assuming leadership roles shall accept special responsibility to uphold and support the Student Code.

2. If behavior is in violation of or deemed irresponsible in accordance with the Student Code, University policy, or any law upheld by SMU, disciplinary and/or civil action shall be taken. (See section on University Judicial System).

#### 2. Rights of the Students

(a) Students are afforded essential rights and freedoms as outlined in the Student Bill of Rights (See Appendix A).

(b) "We recognize the right of individuals to dissent when acting under the constraint of conscience and after

exhausting all legal recourse, to law should be shown by refraining from violence and by accepting the costs of disobedience."<sup>1</sup>

#### 3. Student Grievances

(a) The Issues and Grievance Committee is established by Student Senate to deal with individuals' concerns, questions, or problems. The committee can be contacted through the Student Body President.

(b) Grievance concerning discrimination (including but not limited to race, sex, religion, or ethnic origin) should consult the office of the Dean of Student Life.

### B. Alcohol Policy

Because Southern Methodist University is an educational facility, the consumption of alcoholic beverages is discouraged. However, it is realized that individuals 19 or more years of age have the right to make their own decisions concerning alcohol so long as they comply with State and local law, and University Policy. Responsible drinking behavior is demanded at all times. It must be understood that intoxication is synonymous with alcohol abuse and will not be tolerated.

① Students must abide by the following state and local laws:

(a) It is unlawful for anyone to buy or sell alcoholic beverages in the city of University Park, as it is designated a dry area.

1. In a dry area, possession of more than 24 bottles of beer or more than one quart of hard liquor is prima facie evidence of intent to sell.

Any link between the payment of money and the dispensation of alcoholic beverages, whether payment is made directly or indirectly, violates pertinent provisions of the Alcohol Beverage Code. Additionally, even a donation to charity, when coupled with serving of an alcoholic beverage or admission to an event where alcohol beverages are served, is illegally impermissible.

(a) prima facie is defined as the presumption of guilt of an offense unless disproved by some evidence to the contrary.

2. The charging of admission fee to any campus activity or event is prohibited if alcohol in any form is present and/or being served.

(b) It is unlawful for any person under 19 years of age to possess, purchase or consume alcoholic beverages except when accompanied by a parent or adult spouse.

(c) It is unlawful for any person to sell alcohol to a person under 19 years of age. It is unlawful for any person except a parent or spouse to give an alcohol beverage to any person under 19 years of age.

(d) Legal intoxication is defined as a blood alcohol

level of .1% or above.

1. Public intoxication is subject to a fine by both University Park and Dallas Police Departments.

2. The first offense for Driving While Intoxicated (DWI) is subject to a \$200 fine and/or loss of license for one year.

② The University Alcohol Policy has been approved by, and shall be interpreted and implemented by the President of the University.

(a) It is the policy of SMU that the University prohibits the consumption of alcoholic beverages in public places on campus.

1. Public is defined as all part of campus except within the confines of a student's room or Greek house.

(a) certain cases of exceptions such as residence floor parties are subject to the Residence Hall Private Party Guide-lines which are available from RAs and the Office of Residence Life.

(b) Intoxication does not excuse violations of University Policy. Such drinking rather than being considered a mitigating factor, will be considered further proof of irresponsible and inappropriate conduct. Violations are heard by Judiciary, University Park Police and/or Dallas Police Department. All cases are also dealt with by the Alcohol Abuse Prevention Program.

(c) Violations heard by judiciary are subject to penalties as listed in appendix B.

③ Problem cases related to alcohol should be referred immediately to counseling and the University Alcohol Advisor. This is completely separate from any disciplinary action.

### C. Drugs

The Drugs Policy is in adherence to all federal, state, and local laws. The law regarding the possession and delivery of marijuana is as follows:

1. Except as authorized, a person commits an offense if he knowingly and intentionally possesses a usable quantity of marijuana. An offense is:

(a) A felony of the third degree if he possesses more than four ounces.

(b) A Class A misdemeanor if he possesses between two and four ounces.

(c) A Class B misdemeanor if he possesses two ounces or less.

#### 2. Penalties

(a) A third degree shall be punished for a term of not more than 10 years or less than two years in the Texas Department of Corrections. In addition, the individual is subject to a fine not to exceed \$5,000.

<sup>1</sup> Paragraph 74, Section E, p. 98 The Book of Discipline of the United Methodist Church, 1976.

(b) Class A Misdemeanors

1. Confinement in jail for a term not to exceed one year;
2. A fine not to exceed \$2,000 or
3. Both confinement and fine.

(c) Class B Misdemeanors

1. Confinement in jail for a term not to exceed 180 days;
  2. A fine not to exceed \$1,000 or
  3. Both confinement and fine.
3. Cocaine, amphetamines, and other illegal substances carry stiffer penalties.

A complete listing of this information can be found in the Texas Penal Code.

## D. Hazing

1. In compliance with the Texas Education Code, SMU University Policy and Student Code strictly prohibits hazing. Hazing can lead to, or in and of itself be a violation of Texas Criminal Law or Civil Law.

2. Hazing can be defined as:

Any willful or attempted act by one or more members of a group directed against any other student of SMU subjecting the student to:

(a) Humiliation, shame and/or intimidation with the threat of ostracism or discouragement from remaining in SMU.

(b) Any active physical violence or abuse.

(c) Specifically forbidden hazing activities, include but are not limited to:

Physical or psychological abuse

"Paddling" or late night work sessions

Road trips or rides

Scavenger hunts

Theft (e.g. Removal of the property of others)

Involuntary ingestion of unhealthful substances

Any inherently dangerous situation

Complaints concerning possible violations are to be directed to the Dean of Student Life. Cases will be dealt with on an individual basis.

3. Violations will be routinely referred to judiciary and are subject to penalties as listed in Appendix B. Cases will be dealt with on an individual basis.

## E. Noise Policy

The following procedures will be required for any activities that involve the potential for excessive noise and/or sound amplification equipment:

1. Large outdoor events scheduled on the eve of a standard work day (i.e. Sunday through Thursday) are expected to end by 12:00 p.m. On Friday and Saturday nights the closing hour will be extended an additional two hours to 2:00 a.m.

2. Any outdoor event which involves sound amplification equipment must be registered with the SMU Department of Public Safety and the Office of Student Life.

3. Any noise of exterior or interior origin which creates or causes a noise level in excess of 65 DBA measured inside the room or living quarters of the complainant, any SMU classroom, office, or library building is prohibited at all times.

## F. Dangerous Weapons and Fireworks

1. Students are prohibited on University property from the use and possession of the following:

- (a) Firearms
- (b) Explosives
- (c) Fireworks
- (d) Dangerous Weapons
- (e) Incendiary devices

2. Student owned sporting firearms (including all B.B. and pellet guns) must be registered and stored through arrangements made with the SMU Department of Public Safety.

3. Any violation of this Policy is considered a serious offense and will be dealt with accordingly by:

- (a) SMU Department of Public Safety
- (b) SMU Judiciary
- (c) Office of the Dean of Student Life

4. Duly authorized members of the campus security force or other accredited law enforcement officers may carry firearms in performance of their duty.

## G. Gambling

The University upholds all State law concerning gambling. These laws state that an offense is committed if any individual group, or association knowingly engages in gambling.

## H. Smoking Restrictions on Campus

1. Smoking is strictly prohibited in all places of formal instruction on campus, including (but not limited to) classrooms, laboratories, lecture halls, auditoriums, and all hallways within campus building unless specific "Smoking Permitted" notices are posted in the area.

2. Smoking in dining areas shall be permitted only in designated areas. If any student, faculty, administrator or guest fails to comply with these regulations, he/she shall be asked to leave the cafeteria. A repeat violation shall result in a revocation of all dining hall privileges for that person. This process shall be handled by Level I of Judiciary.

## I. Pets

1. Pets are not permitted on campus property or in University buildings.

2. Fish are allowed with the use of suitable equipment if permission is granted by the Dorm Manager.

## J. Sign Policy

1. Signs and Posters Inside Buildings:

(a) All posters and signs must bear the name of the sponsoring individual, organization, or department. No more than one copy may be placed on each bulletin board or specified space. Maximum size shall not exceed 24"x24".

1. Residence Halls

(a) Signs are to be authorized by the Office of Residence Life and the Office of Student Life. Authorization may be refused to those signs deemed inappropriate under University policies and regulations.

(b) Signs are to be posted by the hall staff.

2. Other Campus Buildings

(a) Posters, flyers, notices, and messages must be posted on appropriate bulletin boards or space specified for the purpose.

(b) Non-campus commercial type materials must be approved and signed by the Manager of Facilities Services before posting.

(b) Failure to comply with these rules may result in removal of signs without warning.

2. Signs and Posters Outside Buildings

(a) Any approved student organization or department wishing to post a sign or decoration outside the campus buildings should apply to the Dean of Student Life for permission.

1. Signs or decorations may not be attached to any building exterior or trees.

2. If a sign or display is larger than a small, temporary one, the Grounds Section of the Physical Plant Department must be notified in order to provide safe and proper erection of the display.

3. Student Center Sign Policy

(a) The Student Center Governing Board has set the following guidelines for the posting of signs in the Student Center.

1. Signs must be approved and dated at the Information Booth in the Student Center.

2. Good judgement is asked to be exercised in the content of signs. No sign should:

(a) Be in bad taste or be blatantly offensive to any group on campus.

(b) Overly encourage the abuse of alcohol.

3. Signs may be placed in the following areas:

(a) On bulletin boards, signs may be placed for one month. The maximum size for the sign is specified on the board.

(b) Signs are not permitted on glass, brick,



painted walls, or wood surfaces. Only masking tape should be used when hanging the sign.

(c) Oversized banners may be placed in the East hallway-patio railing and West cafeteria hallway with the permission of the Student Center Director.

(d) The West brick wall of the main lounge and the main staircase is reserved for Program Council.

(e) No more than one copy of each item may be placed on a bulletin board.

4. All signs must bear the names of the sponsoring organization or individual.

5. When a table has been reserved in the lobby, a sign is allowed to be posted behind the assigned tables while the table is manned. Signs are removed when the table is no longer occupied though it may still be reserved.

6. During campus elections, election rules pertaining to the campaign shall be followed. Campaign signs may be hung from the ceilings.

(b) Any complaints regarding signs in the Student Center should be directed to Student Center personnel who in cooperation with a student member of the Student Center Governing Board will take necessary action.

## K. Use of Campus Facilities

### 1. Use of Buildings

(a) A record of class times and locations is maintained in the Provosts Office.

(b) Many classes are held until 10:00 p.m. on weeknights. (Officers will investigate any activities in classroom buildings after 10:00 p.m.)

(c) The Office of Vice President for Student Affairs is responsible for all student housing.

(d) The Office of Student Life is responsible for fraternity and sorority housing.

(e) The Student Center Director coordinates the programs, meals, meetings, and general operation of the Student Center.

(f) The Manager of McFarlin Auditorium is responsible for handling the arrangements at McFarlin Auditorium and Moody Coliseum.

(g) Permission to sleep or reside in any part of a building needs appropriate approval.

### 2. Use of the Grounds

(a) Activities held on the streets or grounds must be registered in the Office of Student Life and in the Physical Plant Department.

(b) Particular care should be taken in the drilling of holes.

### 3. Use of the University Flagpoles

(a) The flagpole is for the use of flying the colors of the United States. (No other flag is permitted).

(b) The flag may be flown at half-staffed when a member of the University community dies.

## L. Guests on Campus

### 1. Guests Responsibilities:

(a) Any visitor who is not on official business is regarded as a guest of the University.

### (b) General Responsibilities:

1. Guests are subject to all applicable rules and policies as are members of the University.

(a) Guests are expected to uphold the regulations established by the University.

2. Guests must identify him/herself properly when called upon by a University official and to identify his/her host if he/she is not on official business.

### 2. Host's Responsibilities:

(a) Members of the University are in a sense ambassadors of the University.

### (b) Specific Responsibility

1. The conduct of the guest of the University is the responsibility of the student, faculty member, or staff member serving as host.

## M. Sales and Distribution

### 1. Sales projects and the distribution of written material

(a) Any individual or agency that wishes to sell or distribute items on the SMU campus must be sponsored by a SMU recognized organization.

(b) Any illegal item may not be sold or distributed.

(c) Sales projects and distribution of written material in the Student Center or other campus buildings shall be done in accordance to specified procedures. (see the Student Center Director).

(d) Any student recognized organization may request permission from the Dean of Student Life for sale projects. The request shall include:

1. Name and address of the sponsoring student organization.

2. Purpose of sale or distribution.

3. Description and cost of items to be sold or distributed.

4. Place where items are to be sold or distributed.

5. Date of sale or distribution.

(e) Distribution shall be orderly and not interfere with the rights of students or other University members. The distributor must provide a trash receptacle at the site of distribution.

(f) Approved projects may reserve booths in the Student Center by contacting the Student Center Director.

(g) No solicitation is allowed in Residence Halls without the consent of the Office of Residence Life.

### 2. Collections and Donations

(a) Two annual solicitations for charitable purposes have been approved by the University: The United Fund and Sustentation.

(b) No other solicitation or peddling is permitted without written permission from the Dean of Student Life (for Student Organization Drives) or the Vice President for Administration (for non-student, off-campus originated).

## N. Speaker Policy

1. Southern Methodist University recognizes that freedom of speech is regarded as basic and indispensable to a viable educational community.

2. While ultimate responsibility and authority rests with the President of the University, the assumption of responsibility by a student organization which invites a speaker to campus is also essential. Therefore, the following guidelines must be followed:

(a) The proper advance arrangements must be made for use of campus facilities. Coordination with the Program Council is encouraged.

(b) Any potential campus and/or Dallas security requirements must be ascertained prior to the invitation. Before negotiations begin, security needs, if warranted, must be discussed with the SMU Department of Public Safety.

## O. Protests and Demonstrations

1. Peaceful demonstrations may be held on campus provided that 3 criteria are met:

(a) The normal function of the University must not be disrupted.

(b) Respect for the rights of others must be maintained.

(c) Proper channels must be used to seek audiences to express grievances.

2. Visitors to the SMU campus will normally be welcomed, however, non-SMU personnel must abide by all University & civil regulations. The University reserves the right to order from the campus any non University protestors disrupting the campus.

3. Appropriate persons and officials are encouraged to discuss the grievances of demonstrating students or recognized student organizations with the group or its representatives.

4. Permits to carry out demonstrations must be secured from the Director of the Department of Public Safety three days prior to the demonstration. Any question should be directed to the Vice President of Student Affairs.

## P. Response to Official Notice

1. Students are expected to respond immediately to any request from a University official who properly identifies himself as such.

2. When asked for their ID card, students are expected to identify themselves properly and to comply with the re-

quest of the officer, administrator, or member of faculty.

3. If, after responding, a student feels that the authority made an unfair request, he/she may submit a formal complaint to the Student Senate Grievances Committee.

### Q. Emergency Equipment

Tampering with or misuse of fire fighting equipment, call boxes, emergency exits, warning devices, etc., or any hinderance of emergency procedures is a threat to the community and is grounds for immediate judicial action, fines, and other University response as may be appropriate.

### R. Racial and Ethnic Harassment Policy

Racial and/or ethnic harassment directed towards one or more individuals by one or more individuals is strictly prohibited by SMU University Policy and the Student Code.

There shall be no harassment with respect to race, creed or ethnic origin and the penalty shall range from judicial reprimand to expulsion from the University.

Harassment shall include, but is not limited to:

Physical, psychological, verbal and/or written abuse with regard to race, creed and/or ethnic origin.

SMU expects its campus community to respect the rights and dignity of all students and to support the educational program.

### S. Exceptions to Student Code Policies

Exceptions to policies contained in the Student Code are made by the Student Senate. Procedures for obtaining exceptions to the policies may be obtained through the Office of the Student Body President.

## II Policies Pertaining To Resident Students

The University community establishes and maintains residence halls with the intent of enhancing student life and fostering a learning community. In order to provide an optimum environment while housing large numbers of students, it is necessary to provide some guidelines which establish minimal expectations of the behavior of residents.

### A. Visitation

1. Visitation is defined as the privilege of entertaining guests of the opposite sex in one's living quarters on campus. All University residence halls have visitation which varies according to the types of residences.

2. Visitation shall be determined by a two-thirds vote by secret ballot of the residents of each dormitory floor, Greek house, or individual apartment complex.

3. In traditional residence halls, men and women visitation in each other's rooms must be escorted by a host or hostess. On leaving the room, the guest must be escorted to the lobby. The host or hostess is responsible for the actions of his/her guests. All participants in visitation must abide by the guest policy.

4. All University housing units must fall within the following limitations in implementing the visitation policy:

(a) Freshman Residence Hall (Boaz, Cockrell-McIntosh, Morrison-McGinnis, Letterman, and McElvaney).

1. Until the end of the first week of classes, hours of visitation are subject to the Office of Residence Life.

2. After the first two weeks of classes:

Friday—Saturday 12:00 noon—2:00 a.m.

Sunday—Thursday 12:00 noon—12 midnight

Except McElvaney (limited visitation floors are)

Friday—Saturday 12:00 noon—12 midnight

Sunday—Thursday 12:00 noon—8:00 p.m.

(b) Traditional Upperclass Residence Halls (other than limited visitation floors) and Greek housing.

1. Each floor in upperclass residence halls and each Greek house will determine the hours of visitation by a two-thirds secret ballot of the residents.

(c) Upperclass limited visitation floors

1. Any upper-class person may request to be assigned to an upperclass visitation floor when making his/her housing request. The visitation hours must receive a two-thirds majority secret ballot vote and must fall within the following limitations:

Sunday—Thursday 12:00 noon—12 midnight

Friday—Saturday 12:00 noon—2:00 a.m.

### B. Quiet Hours

The hours from 7:00 p.m. to 7:00 a.m. are the official minimum daily quiet hours for students living in residence halls. The atmosphere at this time should be conducive to study or sleep. This is to be observed by all students and their guests.

A 24 hour quiet hours option does exist in one Residence Hall referred as "The Silent Majority." In this building, quiet hours are 24 hours a day.

### C. Guests

1. Guests of the same sex may stay in the residence halls on weekends only, with permission of the hall director. There will be no charge if the guest stays in the unoccupied bed of a resident, however, permission also must be obtained from the absent resident. Guests occupying space not already paid for must pay the daily guest rate. Guests may not stay in any public area of the residence halls.

### D. Bicycles and Motorcycles

Students may not keep bicycles, mopeds, or motorcycles in their rooms or in the entrance areas to buildings.

Bicycle storage areas will be designated for recess periods when residence halls are to be closed during the school year.

Gasoline powered vehicles are not permitted in residence halls at any time, and must be parked at least fifteen (15) feet from the exterior of any university building.

### E. Safety Regulations

SMU makes considerable effort in both time and money to assure that its residence community is kept safe and secure. To this end, Department of Public Safety officers patrol all residence areas from 11:00 p.m. to 7:00 a.m.

1. By having entrance doors locked in the residence halls after closing hours, SMU ensures that its residence halls are reasonably secure.

2. Policies concerning fire prevention and the general safety of resident students have been developed by the Office of Housing and the Office of Residence Life. It is the responsibility of all students to obtain a copy of these regulations.

3. The Professional staff is constantly available for assistance in any emergency situation.

### F. Alcohol

1. No kegs are allowed in traditional residence halls.

2. Alcohol policy for Housing: The University prohibits the use of alcoholic beverages in all public places on campus. In Residence Halls, all dining areas, stairways, hallways, entrance lobbies are considered public areas. All students under 19 years of age are prohibited to transport, possess, store, or consume alcohol beverages anywhere on campus by State Law.

Students 19 years or age or older may possess or consume alcoholic beverages only in the privacy of their personal rooms.

Severe or blatant offenses may be referred to the Level II Judiciary on the first offense. Repeated offenses may be referred to Level II at any time. policy.

## Regulations

If a student fails to respond appropriately, these guidelines will be enforced via administrative action and/or Judicial action. (For further reference, see section on Judiciary).

### H. Residence Hall Regulations

The University establishes and maintains residence halls with the intent of enhancing student life and fostering a learning community. In order to provide an optimum environment while housing large numbers of students, it is necessary to provide some guidelines which establish minimal expectations of the behavior of residents regarding these regulations. However, if a student fails to respond appropriately, these guidelines will be enforced via administrative action and/or university judicial hearing boards. The Office of Residence Life has the right to decide which track would be most productive. Consult your residence staff if you have any questions.

Residence Hall Regulations and Potential Administrative Action via the Office of Residence Life: Such action is considered the equivalent of a Level I Hearing. The normal course of action will be by the Residence Hall Judicial Board System Board Action may include the following:

Category	First Offense	Second Offense	Third Offense
Violating the Visitation Policy	Loss of 2 weeks visitation privilege	Loss of one month's visitation privilege	Loss of one semester's visitation privilege, letter to student from Dean of Student Life, cc to parents
Fireworks Incendary devices	Judiciary-Level II. Liable for cost, any damages, letter from Dean of Student Life, cc to parents	Removal from community w/ letter to parents and Dean of Student Life	Referral to Judiciary
Tampering with fire fighting equipment	\$100 user's fee referral to judiciary-Level II	Removal from community w/ letter to parents and Dean of Student Life	
Property damage	Possible referral to Quad Judicial Board, Liable for the cost of any damages, letter to student from Dean of Student Life, cc to parents	Removal from floor community w/letter to parents and Dean of Student Life	Judiciary—Level II

Level II	Level II	Level II	Level II
Use of Illegal Drugs	Judiciary—Level II	Judiciary—Level II	Judiciary—Level II
Removal of Furniture	Liability for replacement and/or damages, letter to student from Dean of Student Life, cc to parents	Referral to Quad Judicial Board	Judiciary—Level II
Alcohol Violations	Administrative Action by the Coordinator or referral to appropriate Judicial Board	Referral to Level II Judiciary	Referral to Level II plus possible notification of parents and administrative removal from Residence Hall
Utter weapons	Remove pet by impounding	Letter to student from Dean of Student Life, cc to parents	Removal from floor community w/letter to Dean of Student Life and parents
Quiet hours	Written warning	Letter to student from Dean of Student Life, cc to parents	Removal from floor community

### Addendums:

- Any violation of the rights or well-being of others that are not listed above may receive actions from a warning to removal from the floor community.
- Any violation of the rights or well-being of others with aggravated circumstances may receive an action of immediate removal from floor community.
- Removal from the floor community can be:
  - Removal to another floor community.
  - Referral to Judiciary—Level II, if space is not available in another floor community.
  - Removal from the floor community to off-campus with no refund of room rent.
- At all times the office of Residence Life has the right to change your housing assignment in order to remedy a detrimental situation or create a more productive residential environment.

Additionally, the University reserves the right to cancel a residence contract in the interests of order, health, discipline, or other extreme situations. When such action is provoked by the student, the termination will be deemed a breach of contract by the resident and monies will not be refunded. This procedure will be implemented with notification of the Dean of Student Life, the Director of Residence Life and the residence staff and the alleged offender.

## to Recognized/Registered Student Organizations

### A. Recognized Student Organizations

#### 1. General Description

(a) The work of a recognized student organization is an essential part of the learning environment at Southern Methodist University. Open to all students and facilitated through faculty and staff resource persons, these organizations develop many opportunities for experimental learning which supplement and reinforce the classroom activities for students.

(b) The Student Senate has the sole power and responsibility to establish criteria for granting, denying, and removing recognized organization status. Any student organization whose primary purpose is considered to advance the professional or academic interests of the University may be recognized.

(c) Recognized student organizations do not speak officially for the Student Senate or the University.

#### 2. Privileges and Regulations of Recognized Organizations:

- The Student Center facilities may be used for meetings.
- The University's name may be used.
- Office space in the Student Center may be petitioned for.
- Use of Student Activity fee monies may be petitioned for.

1. Monies from the Student Activity Fee shall be used to benefit recognized student organizations and the SMU community as a whole.

2. If a recognized student organization disbands, the assets of that student organization will revert to the source of funding.

(e) Any campus programming or social functions given by a recognized student organization must be scheduled through Program Council.

1. Changes in programming should be reported to Program Council.

2. If an event is believed to threaten the health, safety, or property of the members of the student community, the request for scheduling will be denied until it can be referred through the Program Council to the Office of the Student Body President for direction to the Student Senate.

(f) All off-campus functions including social events, retreats, and out-of-town conferences must be registered with the Dean of Student Life and SMU Program Council.

(g) Policies of a recognized student organization must be in accordance with the Student Code and are subject to review by the Student Senate.

(h) Any contractual agreement entered into must be sent to the Office of the Student's Attorney before signing.

(i) Recognized organizations may request permission to have sales projects within the established guidelines of the Student Code. (See Sales and Distribution under Section I).

(j) Neither the Student Senate nor the University is liable for the debts incurred by a recognized student organization.

### 3. Process for Gaining Recognized Student Organization Status:

(a) An annual request must be filed for recognition with the Student Senate Organizations Committee each spring.

(b) A representative from each new (new being defined as a group that has been in existence less than two years) organization must appear before the Organizations Committee.

(c) Membership-Participation in recognized student organizations is primarily for students. Membership in recognized student organizations must be open to all members of the student body without respect to sex, race, creed, or national origin, except in those recognized student organizations which are national honor fraternities or social fraternal organizations which may prohibit membership on the basis on sex and academic criteria only. All other membership prohibitions by these organizations are specifically prohibited by the Student Senate.

(d) The Constitution, By-laws, or Statement of Purpose of an organization must be consistent with the goals and philosophy of Southern Methodist University.

(e) Religious organizations wishing to be recognized must appear before a joint meeting of the Organizations Committee and the Campus Ministry Council (CMC). New religious organizations must be willing to participate with the CMC before recognition will be granted (participation being defined as attending monthly CMC meetings). Participation with the CMC is required to retain recognition.

(f) Faculty, alumni, or staff advisors must be chosen by each organization. The advisor may serve in any capacity the organizations determines, but they do not have the authority to control the policy or funds of the organization. Previously unrecognized groups requesting recognition during the course of the academic year may submit this information any time.

4. The Student Senate will remove recognized student organization status under any one or combination of the following conditions:

(a) Misuse of funds and/or non-compliance with stipulations placed by the Student Senate on allocated Student Activity Fee monies.

(b) Failure to submit to the Student Senate for approval any change made in the Constitution, By-laws, or Statement of Purpose of the organization.

(c) Failure to notify the Student Senate Office within two weeks of changes in the officers and/or advisors of the organization.

(d) Failure to adhere to the group's own Constitution, By-laws, or Statement of Purpose.

(e) If recognized student organization status is removed or denied, all privileges granted recognized student organizations and enumerated under Recognized Student Organizations are forfeited.

(f) If recognized organization status is denied or removed, a student group may re-apply subject to procedures outlined for obtaining recognized student organization status.

5. A group seeking to be recognized may request the use of Student Center facilities for an initial organizational meeting.

## B. Registered Organizations

1. General Description: In the event that the Student Senate deems that the Constitution, By-laws, or Statement of Purpose of an organization requesting recognition status is not consistent with the goals and philosophy of Southern Methodist University, an organization will be given the status of a registered organization. Likewise, any religious organization who is unwilling to participate with the Campus Ministry Council will be given the status as a registered organization.

### 2. Restrictions:

(a) A registered student organization may be granted meeting space in the Student Center only if such space is available. The organization is given a low priority and can lose their reservation if the room is needed by a recognized organization.

(b) The University's name may not be used.

(c) Registered organization may not apply for University or student funds.

(d) Office space in the Student Center will not be granted.

## C. Fraternities and Sororities

Like all other recognized student organizations at SMU, fraternities and sororities draw their rights and privileges from the Student Senate. Specific regulations governing Rush and Greek policies are established and supervised

by the Interfraternity Council and by the Panhellenic Council for fraternities and sororities with final approval residing in the Student Senate. These policies are subject to review by the Student Senate and shall be in accordance with Student Code policies. The Student Senate affirming the policy of one semester deferred Rush.

1. Rush is defined as any contact between affiliated and unaffiliated students, the intent of which is the pledging of the unaffiliated student to a particular fraternity or sorority.

### (a) Formal Rush:

1. Formal Rush is held at the beginning of the Spring semester.

### 2. Eligibility for Formal Rush and Pledging:

(a) Have successfully completed(\*) 12 semester hours in a college or University in their last semester preceding the formal rush or pledge periods;

(b) Have earned a SMU cumulative grade point average of 2.0 or better by the end of the semester preceding the formal rush or pledge period;

(c) Must currently be enrolled for a minimum of twelve hours to pledge a sorority or fraternity and must have a cumulative GPA of 2.0 to be initiated.

### (b) Open Rush:

1. Open Rush occurs at the beginning of the Fall semester and during the period immediately following Formal Rush at the beginning of the Spring semester.

2. Continuation, readmission, or transfer students may be pledged to fraternities or sororities during the Fall semester.

### 3. Eligibility to pledge in the Fall semester:

(a) Must have successfully completed(\*) 12 semester hours with a GPA of 2.0 or better, in the immediately preceding semester or cumulatively in an accredited college or university.

(b) Must be enrolled in 12 semester hours at the time of pledging and initiation.

(c) Exceptions to the eligibility for Rush shall only be made through the Dean of Student Life or his designate.

(d) A Rush function shall be defined as any contact between unaffiliated and fraternity/sorority members on or off campus with intent to pledge the unaffiliated student at which fraternity or sorority chapter funds or alumni funds or funds of an individual member of that fraternity or sorority are spent on food, beverage, or entertainment.

(e) The Student Senate encourages contact between affiliated and unaffiliated members of fraternities but prohibits Freshman Rush and/or Freshman Rush functions during the Fall semester except those specifically set up and supervised by IFC and/or Panhellenic.

2. Eligibility for a Fraternity or Sorority to remain a recognized student organization at SMU is limited to those chapters who meet the following criteria:

(a) A minimum of fifteen active members per academic year.

(b) A minimum of ten pledges or ten percent of the active membership (whichever is greater in number) per academic year.

(c) All financial accounts must be current with Panhellenic, IFC, and the University; for example, membership dues, utility bills, room and board, etc..

(d) Each chapter must maintain a minimum 2.0 grade point average.

(e) Each chapter cannot acquire more than 2 Level II Judiciary Convictions against that chapter per semester.

(f) Each chapter shall be responsible for attendance at all required Panhellenic and IFC meetings and activities; for example, presidents meetings, panhellenic or IFC representative meetings, etc..

(g) Each chapter shall be responsible for submitting all reports and materials on time to Panhellenic, IFC, or any University Official; for example, membership rosters, scholarship rosters, etc.

(h) Each chapter that maintains a housing facility shall be responsible for meeting the SMU and the City of University Park Fire, Safety, and Health Code.

(i) Each chapter shall be responsible for having a Chapter Advisor who is responsible for attendance at all required Panhellenic or IFC meetings and for seeing that the above minimum standards are met.

(j) If any of the above criteria are not met, the chapter shall be placed on 1 year's probation, during which time all criteria shall be met. If, after the 1 year probation, the chapter still fails to meet one or more of the criteria this shall be grounds for removal of the charter (and therefore chapter) from the University.

(k) Exceptions to the above criteria may be made by the Executive Council of IFC or Panhellenic.

3. Procedure for expansion of the Greek System at SMU shall be specified in the respective Constitution and By-Laws of Panhellenic and IFC.

4. Questions regarding Rush rules and Greek policies should be submitted to the IFC or Panhellenic Office.

## Appendix A

### The Student Bill of Rights and Freedoms

In recognition of Southern Methodist University's long history of dedication to the best principles of higher

education in a democratic society, the student body here asserts for itself the following essential rights and freedoms:

1. As citizens of the community and as members of the University all students are guaranteed freedom of expression, inquiry, and assembly. Students have the right to organize groups or to join associations in support of any cause or common interest as long as that support is voiced in an orderly manner which does not disrupt the regular operation of the University.

2. The student press is to be free of censorship.

3. Students have the same rights of privacy as any other citizen and surrender none of those rights by becoming members of the academic community. The privacy and confidentiality of all student records shall be preserved. Further, the right of all students to be secure in their persons, living quarters, papers and effects against unreasonable searches and seizures is guaranteed.

4. The role of student government and its responsibilities shall be made explicit, and clearly defined means shall be provided to insure student expression in the formulation and application of all institutional policies affecting academic and student affairs.

5. The authority to allocate institutional funds derived from student fees for use by campus organizations shall be delegated to a body in which student participation in the decisional process is assured.

6. A student, group or organization may distribute written material on campus with prior approval providing such distribution does not disrupt the regular operation of the University.

7. No student will be denied admission to the University on account of racial heritage, ethnic origin or on the basis of sex.

8. Student accused of violating institutional regulations or local laws retain the following rights:

(a) Upon seizures or arrest by University officials a student will be informed of his rights in accordance with all federal, state, and local laws.

(b) No form of harrassment will be used by arresting officers to coerce admissions of guilt or information about the conduct of other suspected persons.

(c) No searches or seizures of student living quarters or private property will be ordered unless such an order is issued upon probable cause.

(d) Every student shall be granted a fair hearing before an impartial judiciary body of his peers. This hearing shall include confrontation of witnesses against the accused, process for the appearance of witnesses against the accused, process for the appearance of witness in his favor, and the assistance of counsel of his choosing in a Level III hearing, (or a friend or family member at a Level I

or II hearing). (See Judicial Proceedings Section).

9. The preceding enumeration of rights and freedoms shall not be construed to deny or disparage others retained by student in their capacity as members of the University or as citizens of the community at large.

## Appendix B

### Violations and Penalties

The following violations have been established and defined by the Student Senate:

#### Violations:

##### A. Technical and Minor Violations:

The student's actions are clearly a violation of the Student Code and/or University policy but of a nature such that severe disciplinary action is not warranted. Penalties include any or more of the following: Judicial reprimand, creative discipline, and/or fine.

##### B. Irresponsible Conduct:

The student's conduct is deemed irresponsible and unacceptable to the student community. Penalties include any or more of the following: Restitution, fine, creative discipline, and/or disqualification from office.

##### C. Irresponsible Conduct with Aggravating Circumstances

The student's conduct is deemed irresponsible and unacceptable to the student community and involves significant infringements on the personal or property rights of others. Repeated violations of any Student Code or University policy may be deemed aggravating circumstances. Penalties include any one or more of the following: Creative discipline, fines, disqualification from office, suspension and/or restitution.

##### D. Dishonesty:

Dishonesty will be deemed a serious offense subject to the range of penalties given in category "C".

Dishonesty may be defined essentially as one of the following offenses but not limited to these:

1. Forgery
2. Falsification of records
3. Knowingly furnishing false information to the University or its officials (ST+ff)
4. Lying
5. Falsification of checks, money orders, etc.
6. Theft
7. Unauthorized entry to University facilities

8. Counterfeiting of University documents, permits, identification or other official material of the University.

9. Falsification and/or manipulation of computer data.

**E. Academic Dishonesty:**

See Section on Honor Council pages 61 through 64.

**F. Harm or Intimidation:**

Any harm or threat of same to another person's physical, mental, or social well-being is prohibited. Such conduct is not limited to, but may include the following examples:

- a. Written or oral threats
- b. Threatening gestures or intimidating postures.
- c. Harrassing telephone calls.
- d. Harrassment in public places.
- e. Destruction of Personal Property.
- f. Prejudicial discussion of the victim with others.
- g. Fighting, "roughing up".
- h. Assault in any form.

All such incidents are subject to immediate referral to a Level II hearing board.

## Appendix C Student Center Policy

### GENERAL

The hours for the Student Center shall be:

7 a.m. to 12 midnight, Sunday—Thursday

7 a.m. to 12 a.m. Friday and Saturday

Later hours for any group or organization may be arranged with the approval of the Director of the Student Center. Users shall be charged for overtime and utilities.

No one may remain in the building after closing hours unless accompanied by a permanent staff member and the Student Center Director has been notified, or with special written permission from the Director.

No food or drink may be brought in from the outside by any person, group or organization using the Student Center facilities without the written approval of the Director of Food Service.

Animals or pets are not allowed in the building.

Gambling of any nature is prohibited within the Student Center.

No minors, except those bearing an official ID, are allowed in the building. Those not bearing an official ID will be asked to leave the building.

The Student Center is not liable for items lost in the building or in connection with Student Center-sponsored activities.

All reservations for meeting space, catered food events, tables in the lobby and use of equipment must be made through the Student Center Reservations Office, 692-2368. The rooms in the building may not be used for rehearsals, practice sessions or classrooms except when approved in writing by the Director of the Student Center. For specific information regarding room rental rates and regulations contact the Student Center Reservations Office at 692-2368.

Tickets to be sold in the Student Center Information Booth must offer a discount to students. Otherwise, a handling fee will be charged.

## The University Judicial System

### Introduction

Responsibility for student discipline is vested in the President by the Board of Trustees. To exercise this responsibility, the President has established the University Judicial Council. Upon the recommendation of the University Judicial Council, the President has accepted the following document delineating the judicial system for students at SMU.

### Section One:

#### Philosophy and Purpose

A university is a complex institution. It is distinctive from anything else in society and therefore, the focus of its norms is distinctive. Further, a private university is an elite institution. Admittance and attendance is a privilege granted on the assumption that the applicant shares the university's values and goals and is committed to its purpose. Thus, a contractual relationship is implicitly established between these parties. If, subsequently, the parties to this agreement recognize that a serious difference now exists between them, the student may withdraw or the university may withdraw the privilege of attendance. The judiciary is a means for considering this question and determining an answer.

The judiciary at SMU is a community judicial system established to insure a system of due process to provide protection to the accused individual, and to help induce

maturity and learning by erring students while enforcing the behavior requirements deemed necessary to an academic institution. It also exists to protect the balance between the rights of the accused and those of the University community as a whole.

Because of the nature of SMU, the emphasis is on learning and behavioral change. For the same reasons, the judiciary is not an adversary system of antagonists striving to best one another. It is more in the nature of a community seeking to learn if error has occurred and if so, deciding how best to act so in the future there will be less error. Its watchwords are: serious in purpose, considerate in process, appropriate in response.

### Judicial Code

Members of the University Judiciary, pledge themselves to the following code:

To insure that the policies of the University are maintained by conducting a fair hearing of violations of rules and policies of the University.

To provide an appropriate response and, as needed, penalize persons found guilty of violations of University regulations and policies.

Members of hearing boards shall maintain an impartiality about the matter and/or person under consideration. When unable to do so, they should readily withdraw from the consideration of that matter.

The Hearing Board shall not act as an advocate for the students nor for the University.

Members shall maintain confidentiality of all details pertinent to a matter and all actions related to a hearing. Similarly, they shall refrain from comment on the actions, or persons involved in a judicial hearing.

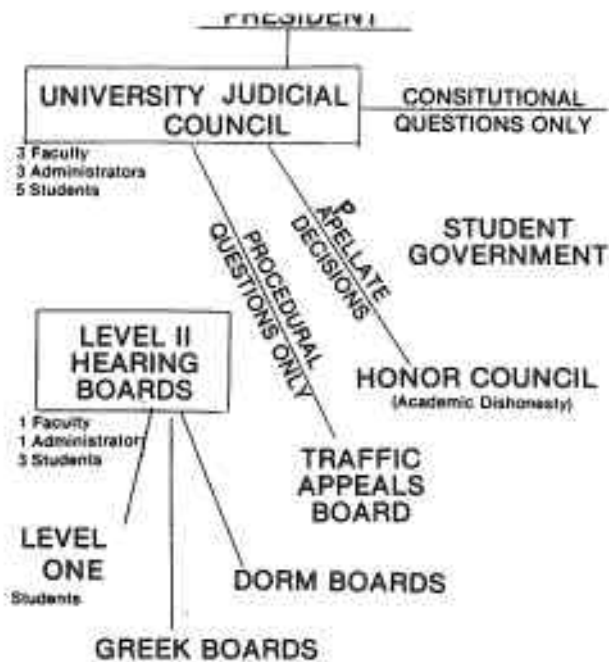
Members who may have been approached by other persons in an attempt to influence a judicial decision shall report such activity to the chair of the Judicial Council and the Dean of Student Life.

Board members who find they are unable to meet the requirements of the judicial system, shall inform the judicial officer and submit a letter of resignation to the Judicial Council.

### Section Two:

#### Outline of the Judicial System

These outlines provide a basic overview of the judicial system and a quick guide to the responsibility of its various parts. For an accurate understanding of any part of the system, one must review the pertinent detailed text in the rest of this section.



### Responsibilities of Judicial Levels

#### Level One Boards: Three Students

Initial hearings originating within its jurisdiction as assigned by the Office of Student Life.

ORL: Incidents occurring within the residence halls.

IFC/Panhellenic: Incident solely concerning Frat./Sorority members and not a major breach of SMU policy.

Traffic Appeals Board (Level I): Four Faculty, Four Students, One Administrator

Solely appellate hearings of traffic incidents.

There is no appeal of fact beyond this board.

Level Two Boards: Three Students, One Faculty, One Administrator

Cases of broader concerns may initially be heard.

Appellate hearings from Level One Board.

Honor Council (Level II): Twenty Two Students

Jurisdiction limited to academic dishonesty. Appeal goes to Level III via the Office of Student Life.

Judicial Council: Five Students, Three Faculty, Three Administrators

Administrative body of the Judicial System.

Special Investigate Powers (in conjunction with the

Office of Student Life).

Constitutional questions of Student Government.

Board of Final Appeal (Level III) for cases originating at lower levels.

### The Organization of the Judiciary

#### Selection of Hearing Board Members

The selection of the members and the procedures to be used are the responsibility of the Judicial Council who shall insure an equal opportunity to all candidates and shall establish and maintain criteria appropriate to the positions and boards for which persons are being considered.

#### Level One Hearing Boards

There are four places in which a level one hearing or its equivalent may occur.

##### (1) The University Hearing Boards

The University Judicial Council shall appoint, each year, 10 undergraduate students to serve as student judiciary members. Three of these 10 students will be designated as permanent chairpersons for the Level One boards. These 10 students shall be listed alphabetically by surnames on two lists, one for the three chairpersons, the other for the 7 remaining students. The first two on the latter list, along with the first person on the other list, will constitute the hearing board for the first case assigned. The next case assigned to Level One will receive a board composed of the next two students on the students' list, and the second chairperson listed, and so on in rotation as each new case is assigned.

##### (2) Resident Hall Judicial Boards

Each individual freshman resident hall shall provide for a judicial board. Membership shall consist of four students from the hall who are to be chosen at random from the total hall population, and shall serve for one hearing. A fifth member of the freshman resident hall board will be drawn on a rotating basis from 10 members of the existing Level I Student Judiciary, and will serve as chairperson of the resident hall board.

The upperclass halls also have a residential judicial system based on this pattern. The North Quad Board is coordinated by the Vice President of the North Quad Residence Hall Association. The board consists of eight residents who are selected via a process supervised by the RHA Vice President and the Area Coordinator.

Appeals from Residential boards and the IFC board go to a Level II board.

##### (3) The Interfraternity Council Judiciary

The Interfraternity Council Judiciary Board shall be comprised of the President of the IFC, who shall act as a non-voting Chair, four persons appointed from the membership of the IFC, and one person appointed from

the student judiciary. This board shall hear cases involving rush violations and other incidents involving fraternities as may be assigned.

##### (4) Panhellenic Judicial Boards

The Panhellenic Judicial Hearing Board shall be comprised of the following members; the vice president of Panhellenic (ex-officio) serving as the non-voting chair, four voting members from the Panhellenic Executive Board, two voting sorority alumnae members, and one voting member appointed by the University Judicial Council.

This board shall hear cases involving rush violations and other incidents involving sororities as may be assigned.

##### (5) The Traffic Appeals Board

The President will name the chairperson and the University Judicial Council will appoint, in consultation with the chairperson, four faculty members, four students, and one administrator to serve each year. A hearing can be held by three of these members if both faculty and students are represented. This board will hear cases involving appeal of citation from the Traffic and Safety Office. This is the board of final appeal for traffic citations.

#### Level Two Hearing Boards

The University Judicial Council shall appoint 15 undergraduate students (three shall be designated as permanent chairpersons for Level Two boards), five faculty members, and five representatives from the administration to serve on this joint board. They shall be listed alphabetically by surnames on two lists, one for the five chairpersons, the other ten remaining students; the faculty shall also be listed alphabetically, and the administrators shall be listed in same manner. In alphabetical order, the first chairperson listed, the first two students, the first faculty member, and the first administrator shall constitute a hearing board of five members to hear the first case assigned.

Level Two hearing boards shall act as an appeal board for cases from Level One and as a hearing board for new cases assigned to them.

#### Graduate Hearing Boards

The School of Law, the Perkins School of Theology, the graduate schools in Humanities and Sciences, Business Administration, SEAS, and Arts shall appoint each year hearing boards, as may be necessary and appropriate, composed of administrators, faculty and students to hear cases involving graduate students in their respective graduate schools.

The rosters of the persons appointed to these boards shall be sent to the University Judicial Council during the

first month of the academic year.

As with all other hearing boards, the result of a graduate hearing board may be appealed to the Judicial Council.

### The University Judicial Council

The Judicial Council, as the basic unit responsible for judicial action in response to student disciplinary problems, is accountable to the President to the University. This Council shall be composed to three administrators, five students, and three faculty (of whom at least one shall be from the School of Law).

Selection of student members shall be accomplished in the spring of the year and appointment shall be for the succeeding academic year. Student members may, with the agreement of the other Council members, be appointed to succeed themselves. All applicants will be interviewed by the Council. Final selection of student candidates for the Council will be made in conjunction with two representatives of the Student Senate who shall participate as voting members with the Council. The roster of selected candidates will be sent to the President of the University for review and approval. The roster of student appointees to the Council will then be sent to the Student Senate for review and action. Approval may be a majority of senators sitting. Rejection must be by a 75% majority of the Senate. Failure to act within 10 days enacts automatic approval. Council members may not serve simultaneously on any other judicial body or in the Student Government.

Faculty appointments are for three years and shall be staggered so ordinarily one 3-year appointment is made each year. The appointment procedure shall parallel that used for selecting student members.

The terms of service for administrators are the same as those for the faculty. Administrators are recommended by the Council and appointed by the President.

Replacement of members leaving early will be for the balance of the current term.

### The Judicial Council has four basic responsibilities:

1. Administrative Body of the Judiciary: As such, it is responsible for the establishment and maintenance of the judicial hearing boards and the operating procedures of the judicial system. These decisions are by a majority of members present.

2. Level Three Hearing Board: The members of such a hearing board are drawn from the University Judicial Council. All members (eleven) may serve at any hearing but an official quorum must consist of at least seven members which include at least one student, one faculty member, and one administrator.

This board convenes solely as an appeal board to

hear cases referred from Level II hearing boards, the Traffic Appeals Board, or the Honor Board (academic dishonesty). Appeals of cases from Level II will be reviewed by the University Judicial Council or its designates before an appeal is accepted for a hearing at Level III.

Appeals of Traffic Appeals Board decisions shall be limited to questions on procedure, regulations, or policy. Questions of fact shall be resolved by the Traffic Appeals Board and are not subject to appeal.

3. Student Government Constitution: Constitutional questions concerning the Student Government may be resolved by the Judicial Council. Such questions must be brought as a written petition to the Council for consideration. If the Council agrees to hear the question, it will meet as a Level III Board at which both sides will be represented and a binding decision will be rendered. Petition for such a hearing may originate from any Student Government Officer or Senator or by popular referendum.

4. Special Investigative Authority: The University Judicial Council has the power to name a Special Investigative Committee in cases in which an alleged offense presents a highly volatile context; e.g. group tensions, sex discrimination or an inter-racial situation. The powers of the Special Investigation Committee shall be defined at the time of its appointment by the University Judicial Council. Both the students who bring a charge and those accused shall submit to the Vice President for Student Affairs two names of persons within the SMU community, who are not involved in the incident, to serve on the Special Investigative Committee. The Office of the Vice President for Student Affairs shall appoint a fifth member to the Committee and shall select one of the five as chairperson. The Special Investigative Committee will act in an advisory capacity to the appropriate judiciary hearing board to which the case is assigned. Any of the parties involved may petition the University Judicial Council for the establishment of a Special Investigative Committee and the Council shall determine its necessity.

### Section Three:

#### Basic Procedures

● Delegation of Authority: The Vice President for Student Affairs may delegate any part of all his authority from time to time, to any person or several persons, wherever in these procedures the Vice President for Student Affairs is designated by the University Judicial Council.

● Assignment of Cause: If the Vice President for Student Affairs or his designate determines that a rule or regulation has been violated, he shall assign cases to one of the several hearing boards described in section two. As a general policy cases assigned to Level I Boards fit one or

more of the following criteria. (1) the alleged offense is of narrow impact and/or first offense, (2) the alleged offense relates to rules established by residence halls or student organizations, or (3) the alleged offense, although major, is appropriate for one of the Level One hearing boards. As a general policy, cases assigned to one of the Level Two hearing boards fit one or more of the following criteria. (1) the alleged offense is major, (2) the alleged offense has resulted in a substantial interference with the proceedings of the University, (3) the offenses are unacceptably repeated, or (4) the alleged offense caused an unacceptable infringement upon the personal or property rights of others. 5) MULTIPLE OFFENSES W/IN A YEAR

These criteria serve as guidelines and the judgment of the Vice President for Student Affairs is the final determinant as to the University's response to any student behavior. Normally, the following types of offenses will be handled by the criminal court system and will not go through the University judiciary structure: (1) homicides; (2) armed robbery and/or abuse of firearms law; (3) rape cases; (4) aggravated assault; (5) DWI resulting in injury to other persons or property; (6) felony thefts with extenuating circumstances; and (7) major or habitual offenders of the state and/or federal laws pertaining to the use and possession of narcotics, dangerous drugs, and marijuana. In the preceding instances the University reserves the right to consider these cases in its judiciary as well as referring them to off-campus authorities. Cases of academic dishonesty and traffic citations are assigned to their respective boards of jurisdiction.

It should be noted that the University reserves the right to evaluate the off-campus conduct of its community members and to respond to it appropriately. Such a response can include judicial action. This action does not conflict with prevailing laws concerning double jeopardy.

● Notice of Violation: The Vice President for Student Affairs or his designate shall give notice in writing to the student of the complaint against him. Such notice shall contain the particulars with respect to the facts constituting the offense, the time and place of hearing, and the particular hearing board to which the case is assigned. This delay may be waived by the mutual agreement of the accused and the Vice President for Student Affairs or his designate.

● Guilty Pleas: A student may <sup>prefer</sup> choose to plead guilty to the offense with which he has been charged in which case, the student may agree on an appropriate punishment with the Vice President for Student Affairs or his designate. All such agreements reached will be reviewed at the end of each semester by the Judicial Council.

● Vacation Periods and Emergencies: The Vice President for Student Affairs or his designate may choose to hear a

R. White



disciplinary problem in an "Administrative Hearing" during vacation periods, or in emergency situations which may arise during the school year. The term "emergency" implies an inability to convene a judicial hearing board within feasible time. Appeal may be made by the student to Level II of any administrative hearing decision.

### Conduct of the Hearing

#### ● Commencement

No hearing shall begin until at least three days have elapsed exclusive of the day or service of notice on the accused. This period may be waived at the mutual agreement of the accused and the Vice President for Student Affairs or his designate.

#### ● Extension Time

The chair of the hearing board to which a matter is assigned may in his/her discretion grant extensions of time as may be reasonably necessary to permit the accused student sufficient time to prepare his/her defense. The chair may also in his/her discretion grant an extension to the complainant so that additional evidence may be made available to the hearing board.

If after the hearing has commenced the hearing board discovers the need for more preparation, the chairperson shall recess the hearing to a later time. The hearing board may then direct any further investigation necessary for its proper disposition of the case.

Inability to obtain witnesses shall not be justification for undue delay in commencing a hearing.

#### ● Change in Allegations

Any change in the allegation against a student shall be regarded as a new complaint subject to the process for handling complaints in the first instance.

#### ● Quorum-Level One and Two

All members of the hearing board shall be present throughout the hearing. If less than the required number are present at the opening of the hearing, the hearing shall be postponed until a full board can be convened. Should a vacancy occur during the hearing, the hearing shall recess until all members can be present. These requirements may be waived upon agreement of all parties. All members may vote, and all determinations shall be by majority vote. A failure to vote shall be registered as a not guilty vote.

#### ● Quorum-Level III Judiciary Board

At least seven members, including at least one student, one faculty member, and one administrator, shall be present throughout the hearing, only members who have been present throughout the hearing may vote and all determinations shall be by majority vote. A failure to vote shall be treated as a not guilty vote. On the question of guilt or innocence, a tie vote shall be treated as vote to acquit.

● Disqualification: Any member of a hearing board, upon considering any challenges from the accused concerning his/her impartiality, may withdraw voluntarily. In such cases, the accused may waive the quorum and the hearing proceed. If the accused chooses not to waive the quorum, the next person in rotation shall serve on that board and the hearing will be rescheduled.

● Joinder and Severance: Several students accused of participating in a common offense may be tried together; if a student wishes to be tried separately, he/she should request severance of his/her case during the initial meeting about hearing arrangements with the Office of Student Life. If denied by the dean, he/she may appeal this decision to the chair of the University Judicial Council for a decision.

### Open Hearings

In the interest of the university community and the assurance of a fair hearing for the accused, all hearings ordinarily shall be open but restricted to current members of the community. Other persons may be present only at the request of the accused or the Office of Student Life (Chair shall decide).

Either the accused or the Office of Student Life may request a closed hearing (i.e. limited to participants only) or speak to such a request. After hearing such a request, and the possible comments of the other party, the board in closed session shall decide. The hearing will remain open only if in the board's judgment, the community's need to know is greater than the accused's desire for privacy.

### Reporting of Proceedings

1. Summaries of the results of judicial hearings shall be provided periodically by the Office of Student Life.

2. No publication of any individual report or summary of activity will carry personal names or other personally identifying details.

3. Nothing will be published about any judicial hearing until the final official disposition or appeal is resolved.

4. Should the accused and/or guilty party (parties) "go public" regarding a hearing, this action will free the University to comment on any such statements and/or the matter being discussed.

● Right of the Accused to Have Companions-Level One and Two: The accused may at his option have with him at the hearing two members of his immediate family and a friend. The friend, if selected, must be a student, faculty member or administrator from within the University community. Persons from outside the University may be permitted only with the mutual agreement of the University.

● Representation by an Attorney: The accused may not be represented by an attorney at any hearing.

At A Level III hearing, an attorney may be present for advice under the following conditions:

1) The Office of Student Life is to be notified of such intent as soon as the student is informed that an appeal has been granted and the name of the attorney must be filed with the Dean as soon as an attorney has been selected.

2) The attorney must contact the Office of Student Life at least 72 hours prior to the hearing for a review of the procedures and policies of the SMU Judicial System.

3) The Office of Student Life also has the option of an attorney present.

● Rules of Evidence: Rules of evidence shall be informal, and the hearing board shall have discretion with respect to admissibility of testimony and documents. The standard of proof is that a conclusion of guilt shall be sustained by clear and convincing evidence, which is more than a mere preponderance of evidence but less than the strict criminal law standard of proof beyond a reasonable doubt.

● Order of Testimony and Documents: The parties shall present to the chair a list of witnesses and documents prior to the hearing. Ordinarily, the complainants shall proceed first with their case followed by the presentation of the accused.

● Presence at the Hearing-Confrontation of Witnesses: The accused shall have the right to be present during the entire hearing and shall have the right to question any witnesses as he/she may choose.

● Decorum: The chair shall maintain order for the proper conduct of the hearing. When necessary the chair may expel disruptive individuals or adjourn the hearing to a later time to assure the full development of the facts in a calm, deliberate setting.

● Findings: The hearing board shall conduct its discussions in executive session but shall announce its findings in open hearing. The findings shall be announced as either guilty or not guilty of the alleged offense, and if guilty, the penalty assessed.

### Section Four:

#### Records

The following policies concerning records and the release of information are in compliance with the Family Education Rights and Privacy Act of 1974 (the Buckley Amendment).

The records of hearings shall be prepared by the chair of the hearing board and filed by him/her in the Office of the Vice President for Student Affairs. These records shall be available to members of the various hearing boards which constitute the University Judiciary system and may

be made available to bonafide members of the University community upon request.

Records of the Office of Student Life shall contain all information; data, correspondence, findings and records of official action concerning student discipline.

a) A judiciary case will remain on record until erased approximately three years after graduation.

b) If a case originates at Level I and involves a Level I offense, the information will stay within the University community.

c) If a case originates at Level II and involves a Level II offense, the case will remain a part of the student's record until destroyed three years after graduation. This information is used to answer recommendation forms where questions related to disciplinary action are asked.

## Appeals

### Level One Hearings

All cases heard by Level One hearing boards may be appealed by the accused to Level Two where the matter shall be heard *de novo* in the same manner as those cases heard in the first instance by the Level Two hearing boards. A request for an appeal to a Level Two hearing board must be submitted in writing via a "Reason(s) for Appeal" form available in the Office of Student Life. This appeal form must be completed and submitted to that office within 72 hours of the original hearing. Summary statements will be included in the findings of the original hearing board as a matter of record for the appeal process. Therefore, students wishing to exercise the appeals alternative should use discretion in their decisions.

### Traffic Appeals Board

The Traffic Appeals board will hear cases involving appeal of citations from the Traffic and Safety Office. Appeals must be made to the Chair of the Board, through the Traffic and Safety Office, within 15 days after issuance of the citation.

### Level Two Hearings

All cases heard by Level Two hearing boards may be appealed by the accused student to the University Judicial Council where, if the appeal is granted, the matter shall be heard *de novo* in the same manner as those heard in the first instance by the Level One and Level Two hearing boards.

### Honor Board Hearings

Appeals are to be filed in writing with the Dean of Student Life who shall decide. If an appeal is granted, it will be heard by a Level III Hearing Board.

### Level Three Hearings—Finality of Decision

All appeals for a Level Three hearing are reviewed by an appointed group of Judicial Council members. If the appeal is granted, a Level Three Appellate Board (see item 2, Judicial Council) will hear the case *de novo*. This Board

may assess its own penalty and it serves as the board of final appeal.

At a Level Three appellate hearing, the accused may bring an attorney for advice during the hearing, (see section Three, Basic Procedures) however, the accused must present his own case.

## Rehearings

At the urging of the accused and upon presentation of significant new evidence, the Dean of Student Life, after consultation with the chair of the board, and the chair of the University Judicial Council, may order a case to be reheard. The rehearing will be at the same level as the original hearing. After such a rehearing, the accused shall be entitled to the same rights of appeal as in any case.

Only the accused may request a rehearing. If a student has been charged and tried and found not guilty, the individual may not be retried for the same incident at any future date.

## A. Penalties:

The following penalties may be implemented individually or in any combination thereof by the Hearing Boards.

1. Expulsion: Separation from the University on a permanent basis. This condition will be permanently noted on the student's academic transcript. This penalty is automatically reviewed by the President of the University and does not go into effect until approved by him.

2. Suspension: Mandatory separation from the University for an assigned period of time and under such conditions as deemed necessary by the judiciary with regard to such factors as the student's campus visiting privileges and terms of the student's readmission to the University. Organizations or groups also may be suspended from the University by a Hearing Board.

3. Fine: A student may be fined any amount not exceeding \$250.00.

4. Disqualification from holding official student positions: A student may be restricted from representing the University in any intercollegiate activity or may be restricted from participation in any University activity or organization.

5. Restitution: Compensation for damages to persons or property caused by the student's actions to be paid to the appropriate person or institution.

6. Creative Discipline: Procedures designed by the judiciary in consultation with the student and the office of Student Life in an effort to fit the discipline to the individual and the circumstances surrounding the particular case. The objective is education and rehabilitation.

7. Judicial Reprimand: A student may be given a judicial reprimand which is formal notice by the judiciary

that the student has violated Student Code and/or university policy or has otherwise acted irresponsibly and if found guilty of further offense, his case will be considered much more serious.

8. DV Transcript Record: When so designated by the Hearing Board, the indicator DV (Disciplinary Violation) and the date will be recorded on the academic transcript of a student. This notation will remain until three years after the student is graduated from the University.

## B. Probated Penalties:

A student's penalty may be probated. If the student violated the terms of the probation during the time period specified by the judiciary, the probation may be lifted and the penalty put into effect. If the terms of the student's probation are violated, the student's case will be reviewed by the judiciary which issued the probated penalty when possible. If original board members are unavailable or unable to serve, replacement members will be assigned.

# THE HONOR CODE OF SOUTHERN METHODIST UNIVERSITY

Intellectual integrity and academic honesty are fundamental to the processes of learning and of evaluating academic performance, and maintaining them is the responsibility of all members of an educational institution.

As well as being fundamental to the processes of education, the inculcation of personal standards of honesty and integrity is a goal of education in all the disciplines of the University.

The faculty has the responsibility of encouraging and maintaining an atmosphere of academic honesty by being certain that students are aware of the value of it, that they understand the regulations defining it, and that they know the penalties for departing from it.

The faculty should not only actively encourage student honesty, but should also scrupulously discourage dishonesty, and insofar as is reasonably possible, should assist students in avoiding the temptation to dishonest actions. Such steps as carefully defining the limits set on cooperative assignments are among the ways in which the faculty can help.

Students too, must share the responsibility for creating and maintaining an atmosphere of honesty and integrity.

Students should be aware that personal experience in completing assigned work is essential to learning. Permitting others to prepare their work, using published or unpublished summaries as a substitute for studying required materials, or giving unauthorized assistance in the preparation of work to be submitted are directly contrary to the honest process of learning.

Students who are aware that others in a course are cheating or otherwise performing dishonestly have the responsibility either to warn the accused student or to bring an accusation directly to the Honor Council. Further, students must inform the instructor, not necessarily in such terms as to accuse the dishonest, but in order that the instructor may know that he or she has not sufficiently assured an environment of academic honesty and can correct the situation.

Students and faculty must mutually share the knowledge that any dishonest practices permitted will make it more difficult for the honest students to be evaluated and graded fairly, and will damage the integrity of the whole University. Students should recognize that both their own interests, and their integrity as individuals, suffer if they condone dishonesty in others.

The faculty must be aware that permitting dishonesty is not open to personal choice. An instructor who is unwilling to act upon offenses is an accessory with the student offender in deteriorating the integrity of the University.

## **The Constitution of The Honor Council of Southern Methodist University Preamble**

We, the students of Southern Methodist University, recognizing the desirability for an atmosphere of trust among members of the academic community, in order that the University might educate men and women of good character, establish the Honor Council of Southern Methodist University. All academic work within the University community shall be subject to the guidelines of the Honor Code. In order to promote the integrity and secure the academic rights of each member of the University, the following Constitution of the Honor Council is established.

### **Article I — Purpose and Scope**

The Council is created to encourage and preserve the honor and integrity of the students enrolled in the University. It seeks to protect the innocent and punish the guilty so as to promote the general integrity of the University.

Section 1—The Honor Council shall oversee the academic conduct of all undergraduate and graduate students with the exception of those students enrolled in the schools of law or theology of Southern Methodist University. Cases involving law or theology students enrolled in courses under the jurisdiction of the Honor Council shall be referred to the above school as is appropriate. Any giving or receiving of aid on academic work submitted for evaluation, without the express consent of the instructor, shall constitute a breach of the Honor Code. This applies to all work submitted for evaluation unless specifically released from the Honor Code.

Section 2—Any student, full- or part-time, enrolled in any undergraduate school or appropriate graduate school of the University, shall be under the jurisdiction of the Honor Council and subject to its penalties.

### **Article II — Construction**

Section 1—The Honor Council shall be composed of Twenty-six (26) members in the following manner:

Three representatives from the Freshman class

Five representatives from the Sophomore class

Six representatives from the Junior class

Eight representatives from the Senior class

Four representatives enrolled in the graduate schools under the jurisdiction of the Council.

Section 2—Honor Council members must be SMU students enrolled in at least 12 hours or the equivalent load for full-time student status.

Section 3—The members shall be chosen as follows:

(a) The Screening Committee of the Student Senate shall accept applications from all interested students.

(b) The Screening Committee shall accept or reject each applicant based on the following criteria:

(1) The applicant must meet the minimum enrollment criteria as outlined in Article II, Section 2 with an overall GPA not less than 3.00.

(2) The applicant must never have violated the Honor Code or have been convicted by a Level II or higher Judicial board.

(3) New applicants must have written references from at least three faculty members. Applicants who are already members of the Honor Council must have at least one written reference.

(4) Any other criteria the Screening Committee, with the approval of the Honor Council, deems necessary.

(c) The Screening Committee shall further investigate those applicants meeting the above criteria by contacting the chairman of the applicant's major departments, and/or the applicant's advisor and current instructors.

(d) The approved applicants shall be presented to the Student Senate for election.

(e) Each Senate member shall vote for as many applicants as there are positions available in the class under consideration. If any one candidate receives more than fifty percent of the vote, a second vote shall be held among the remaining candidates. Otherwise, a plurality will constitute election.

(f) The Senate shall reserve the power to reject any applicant by majority vote even if approved by the Screening Committee.

(g) Should there be fewer applicants elected than the number required for a given class, the Senate shall fill the vacancies with current applicants from the other classes.

Section 4—Each senior, junior, sophomore, and two of the four graduate level representatives shall serve a term of one year beginning on the first Wednesday following the first Tuesday in April and ending the first Tuesday in April of the following year. Election of these representatives shall be held by the first Tuesday in April. The freshman representatives and the other two graduate level representatives shall be elected by the first Tuesday in November and serve until the first Tuesday of April of the following year.

Section 5—If a vacancy should occur, the Screening Committee will call for applications from the classes in which the vacancy is created within one week of notification of vacancy. If no applications are received within one week, the Screening Committee shall call for application from the entire student body.

Section 6—The Council shall have the power to impeach, suspend, or otherwise discipline its own members as set forth in the By-Laws.

### **Article III — Hearings**

Section 1—Upon receipt of an accusation of an Honor Code violation from student or faculty, the President of the Honor Council shall call for an investigation by a committee of two Council members within two days. Investigations shall be limited to those who might have been a part of, or witness to, the alleged violation. These Council members shall act as presentors in the case of a hearing. These Council members acting as investigators and subsequently presentors shall not discuss the facts of any case in question with other Council members. The accused shall be notified of any and all Council actions.

Section 2—Hearings shall be called no later than 10 days after receipt of accusation.

Section 3—When a hearing is called, the President shall select five members of the Council, excluding the presentors, to act as a hearing board. The President or Vice President shall act as presiding officer and shall not have a vote.

Section 4—No one shall be allowed to sit on the hearing board or act as presenter if he or she is related by blood or marriage to the accused or is a member of the same social fraternity or social sorority as the accused.

Section 5—The Council, by majority vote, may declare any member ineligible to sit on the hearing board on other grounds. The accused may challenge any member's eligibility and the Council will make judgment by majority vote.

Section 6—All hearing shall be private unless the accused an open hearing. If more than one accused is involved, all of those accused must request open hearings before an open hearing may be held; otherwise the hearing shall be private.

Section 7—The President shall administer the following oath to all who give testimony before the hearing board: "I, \_\_\_\_\_, on my honor, do solemnly swear to tell the truth, the whole truth and nothing but the truth."

Section 8—When a hearing is called, the verdict shall be "guilty" or "not guilty". A four out of five vote, or three out of four in case of one abstention, must be rendered to convict the accused. Abstentions shall not prohibit a verdict of guilty, but upon receiving two or more abstentions, the President shall call for a new hearing with new members. The presiding officer shall not vote. Written notice of a decision of guilty will be sent to the guilty student, the Academic Dean of the School in which the guilty student is enrolled, the University registrar, the Dean of Student Life, the instructor, and the parents of the guilty student. If the guilty student can prove financial independence, then the parents of the guilty student will not be notified. The notices shall be made no later than two days after final determination of the case has been made. A copy of all correspondence must also be kept in the permanent files of the Honor Council which shall be kept in the Dean of Student Life's office.

Section 9—All business conducted on investigations, hearings, business meetings, and other official Council functions shall be held in strictest confidence among the members of the Council. In addition, any person, excepting the accused participating in the hearings or informed of the results shall keep all knowledge in the strictest confidence.

Section 10—If a student should withdraw from the University after a charge has been made and before a hearing has been held, an investigation shall be completed and the facts recorded. The accused must appear before the

hearing board prior to being allowed to re-enter the University.

Section 11—Should a faculty member personally decide a case, and the Honor Council has not received an accusation, two routes of appeal are available to the accused student: the Honor Council route and the Academic route. Appeals to the Honor Council must be made in writing no later than three days after the faculty decision. If the Academic route is chosen, the student shall appeal first to the Chairman of the Department, then the Dean of the School, the Provost, and finally the Faculty Committee on Ethics and Tenure. If the Honor Council route is chosen, the President of the Honor Council will proceed as prescribed by Article III, Section 1. Should a hearing be called and the Hearing Board reach a decision different from that of the instructor, the presiding officer shall personally present the evidence leading to the decision to the instructor, but the instructor shall make the final determination. However, the Honor Council may request an investigation by the Faculty Committee on Ethics and Tenure. Should the Honor Council uphold the instructor's original decision, the accused student may appeal as prescribed in Article III, Section 12. Once one route of appeal has been selected, the other is eliminated.

Section 12—All requests for appeal of the hearing board's verdict shall be submitted to the Dean of Student Life in writing no later than three (3) school days after the hearing board decision. In consultation with the Chairperson of the University Judicial Council, and the President of the Honor Council, the Dean of Student Life will direct the Chairperson of The University Judicial Council to convene a hearing board with new members no later than three (3) school days after the appeal request is accepted. The appeal shall be heard de novo and the presentors from the original hearing shall remain the same. Punishment determined in the first hearing shall be suspended during appeal. There shall be only one appeal.

Section 13—Grounds for appeal shall be the following:

1. Substantial new evidence
2. Significant procedural irregularities
3. Insufficient evidence for a conviction of guilty.

Section 14—All records of Board decisions and all Board correspondence shall be kept confidentially and permanently in the Honor Council file.

## Article IV — Penalties

Section 1—The minimum penalty for cases involving material submitted for course credit shall be a recommendation of "HV" (Honor Violation) for the course in question, to be administered by the instructor for the course. The "HV" shall be averaged as a grade of "F" in the student's cumulative average; the "HV" shall remain on the transcript

until three years after graduation; the "HV" shall then become a "WF" on the transcript. Should the faculty member not accept the recommended penalty, the Honor Council may request an investigation by the Faculty Senate and/or the Provost.

Section 2—In addition to the minimum penalty above, the following penalties may be given:

(a) a personal reprimand from the Honor Council, to be kept in the student's file in the Office of Student Life and in the Honor Council office

(b) a probated suspension from the University for a term ending not less than five years from the date of the hearing

(c) suspension from the University, for a term to be set by the hearing board.

No other penalties other than the above shall be administered.

Section 3—The board may recommend that no penalty be given only in the most extraordinary and unusual circumstances.

Section 4—Penalties shall be decided by the hearing board in closed session. All penalties shall be decided by a four out of five vote, or three out of four in case of one abstention. The criteria on which a decision should be based are:

- (a) previous record
- (b) premeditation
- (c) truthfulness and cooperation in the investigation and hearing.

Section 5—

(a) Impeding the investigations of the Council, lying to the Council, or in any way failing to cooperate with the Council shall constitute violations of the Honor Code.

(b) Failure to issue a personal warning or to report to the instructor or to the Honor Council when a known or suspected violation has occurred shall constitute a violation of the Honor Code.

Section 6—In cases not involving material submitted for course credit, including those outlined in Section 5, above, the minimum penalty shall be a personal reprimand from the Council. A copy along with a complete explanation of the violation shall be kept on the University's record in the Office of Student Life as well as the Council's files. In addition to this minimum penalty, those penalties outlined in Section 2 above may be given.

## Article V — Officers

Section 1—The Honor Council shall have the following student officers:

A PRESIDENT who must be a senior or graduate student.

A VICE PRESIDENT who must be a junior, senior or

graduate student.

Section 2—The President and Vice President shall be elected by a majority of those voting, using a secret ballot. If no majority is achieved on the first ballot, a runoff election shall be held between the two candidates with the most votes.

Section 3—The President of the Student Body shall preside over the meetings of the Honor Council until the Council elects its own President.

Section 4—It shall be the duty of the President to preside over every meeting and hearing, to arrange for the hearing of any student accused, to select the five members of each hearing board, to handle all correspondence involving the verdict of the hearing board, to take minutes at every hearing, and to handle any other duties common to the office. The President shall also administer the following oath to each new member of the Council: "I do solemnly pledge, on my honor, to obey and uphold the Constitution and By-Laws of the Honor Council and to perform my duties to the best of my ability." The President of the Student Body shall administer the above oath to the newly elected President of the Honor Council upon his or her election.

Section 5—It shall be the duty of the Vice-President to summon the accused and witnesses in all hearings, to take the minutes at each meeting, to keep permanent records of all minutes, hearing or meeting, and to assume the duties of President when necessary.

Section 6—If the office of President should be vacated, then the Vice President whether a junior, senior, or graduate student, shall assume the office and duties of President for the remainder of the term. If the office of Vice President should be vacated, then a new Vice President shall be elected immediately. In both cases, the vacant position on the Council shall be filled per Article II, Section 5.

## Article VI — Meetings

Section 1—Regular meetings of the Honor Council shall be held the first Wednesday of each month.

Section 2—Special meetings may be called by the President at any time.

Section 3—Two-thirds of the members shall constitute a quorum.

Section 4—All meetings shall be conducted according to Robert's Rules of Order, Revised.

## Article VII — Publicity

Section 1—Each new student entering the University will be informed by the Honor Council as to the functions of the Honor System and his or her obligations to the Honor Code.

Section 2—All new students shall be provided with a

copy of this Constitution and By-Laws of the Honor Council upon entering the University.

Section 3—Each student must acknowledge his or her understanding of and agreement to abide by the Honor System by signing a formal pledge prior to his or her official registration in the University.

Section 4—A shortened form of the formal pledge shall appear on any work submitted for evaluation. This pledge shall be: "On my honor, I have neither given nor received unauthorized aid on this work." and shall be signed by the student submitting the work.

## Article VIII — Amendments

Section 1—Amendments may be proposed by a student senator, faculty senator, member of the Council, or by petition of no less than ten percent of the student body.

Section 2—Amendments to this Constitution shall require a two-thirds vote of the Student Senate, the approval of the Dean of Student Life, and the Provost of the University.

## Article IX — Ratification

This Constitution shall take effect immediately upon a two-thirds majority vote of the Student Senate, the approval of the Dean of Student Life, and the approval of the Provost of the University.

# SYNOPSIS

## of Honor Council Bylaws

### The Honor Code

The Honor Code is a statement of principle concerning academic honesty and its manifestations in University policy.

### The Constitution of the Honor Council

The Honor Council implements the Honor Code. The Constitution is the guideline by which the Honor Council operates. Articles III and IV directly concern you in that they deal with hearings and penalties, respectively. The following is a summary of these Articles.

Upon receipt of an accusation, the Honor Council will proceed with an investigation into the circumstances and background of the case within two days. This investigation will be carried out by two investigators appointed by the Honor Council President who will also act as presenter at the hearing. The hearing date will be set within ten days of receipt of the accusation. A hearing board will consist of five members chosen by the Honor Council President, and its composition is subject to the approval of the accused. The President or Vice President of the

Council will preside at the hearing as a non-voting member of the Board. Hearing will be private unless otherwise specified by the accused.

All verdicts of "guilty" will result in written notice sent to the student, his parents, his Academic Dean, the Dean of Student Life, the instructor, and the University registrar. Copies of all correspondence must be kept in the permanent Honor Council files in the Office of Student Life. Business conducted by the Council shall at all times remain strictly confidential.

Following a verdict of guilty, the minimum penalty for cases involving material submitted for course credit shall be recommendation of a grade of 'HV' (Honor Violation) for the course, which shall average as an 'F' in the student's GPA and shall remain on the transcript until 3 years after graduation. At that time, it shall be changed to a 'WF'. The only other additional penalties which may be assigned include:

1. Personal reprimand from the Honor Council, kept in the student's file in the Office of Student Life and the Honor Council office.

2. Probated suspension from the University for not less than 5 years.

3. Suspension from the University.

Determination of penalty will consider the student's previous record, premeditation, and his truthfulness and cooperativeness throughout investigation and hearing procedures.

If an appeal is granted, a de novo hearing by Level III Judiciary, with the same Honor Council investigators, must be called within three (3) school days.

Minimum penalty for cases not involving material submitted for course credit shall be a personal reprimand from the Honor Council. Other penalties as outlined above may also be assigned.

Appeal requests must be submitted to the Dean of Student Life no later than three (3) school days after the Hearing Board reaches a decision, in consultation with the Chairperson of The University Judicial Council, such requests will be reviewed by the President of the Honor Council and the Dean of Student Life. Grounds for appeal are substantial new evidence, significant procedural irregularities, or insufficient evidence for a conviction of guilty.

This is only a summary of Articles III and IV. For specific wording and further details, the Constitution itself should be consulted.

Honor Council Bylaws are available from the Honor Council Office upon request.